



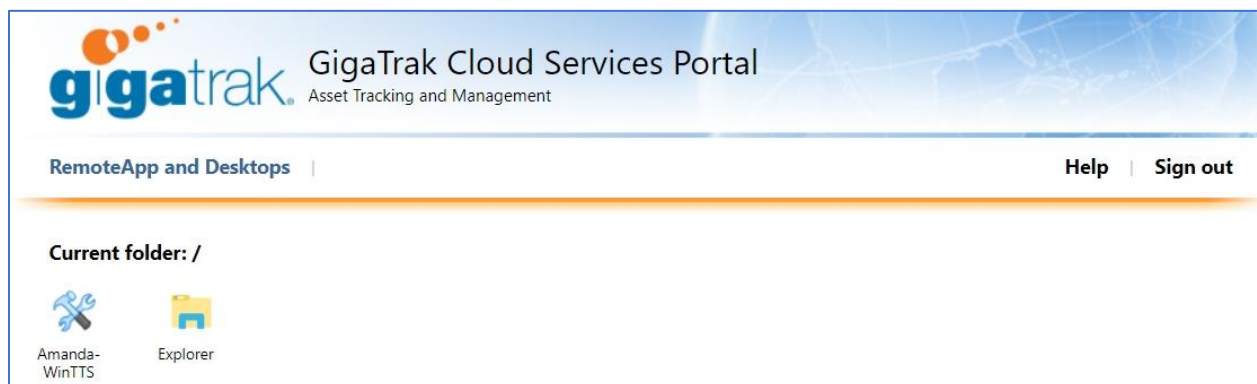
Cloud Login

Thank you for trialing or purchasing our Cloud Based Tool Tracking System. GigaTrak cloud uses an RDP connection (Remote Desktop). The following documents explains the two ways to login to your GigaTrak software.

First, you will first need to go to <http://portal.gigatrak.cloud> and login to the Remote Desktop Portal.

This should be the gt\PTS2User1 (you will be given your own gt\ logins in your Order Acknowledgement email) and whatever password you set or were given if this is your first login. After logging in for the first time, you will be prompted to change your password.

Once logged in, it should look like this,

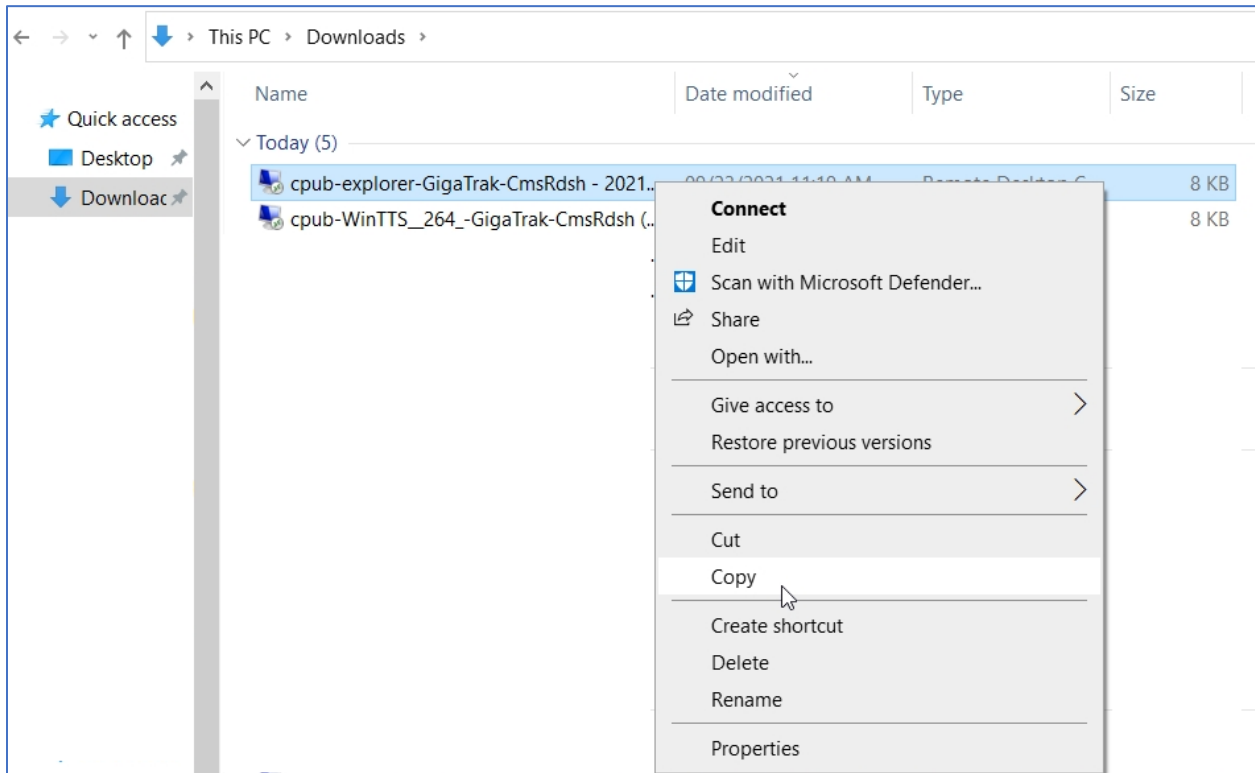


Click on the WinTTS icon. This will download the file to your PC.

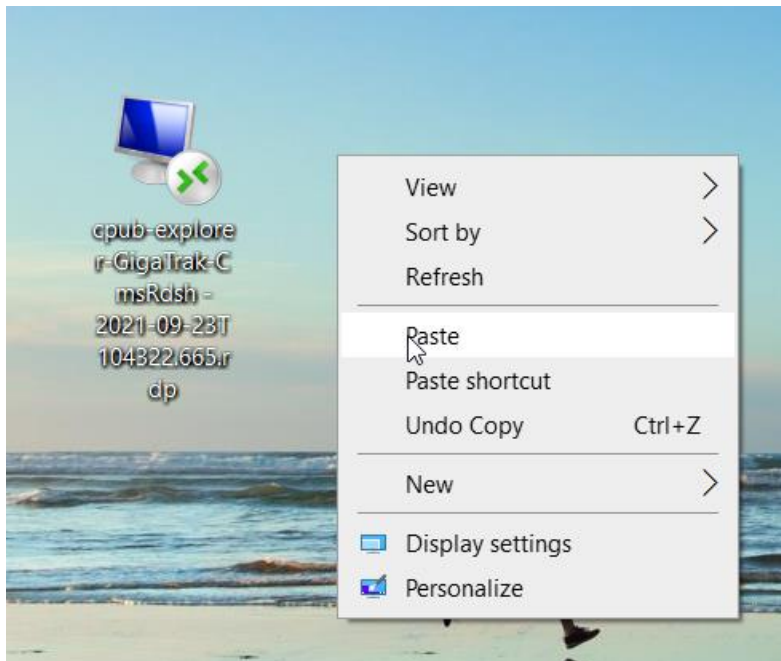


Either open your PC's File Explorer and bring up your downloads folder or click the arrow on each download and press "Show in Folder".

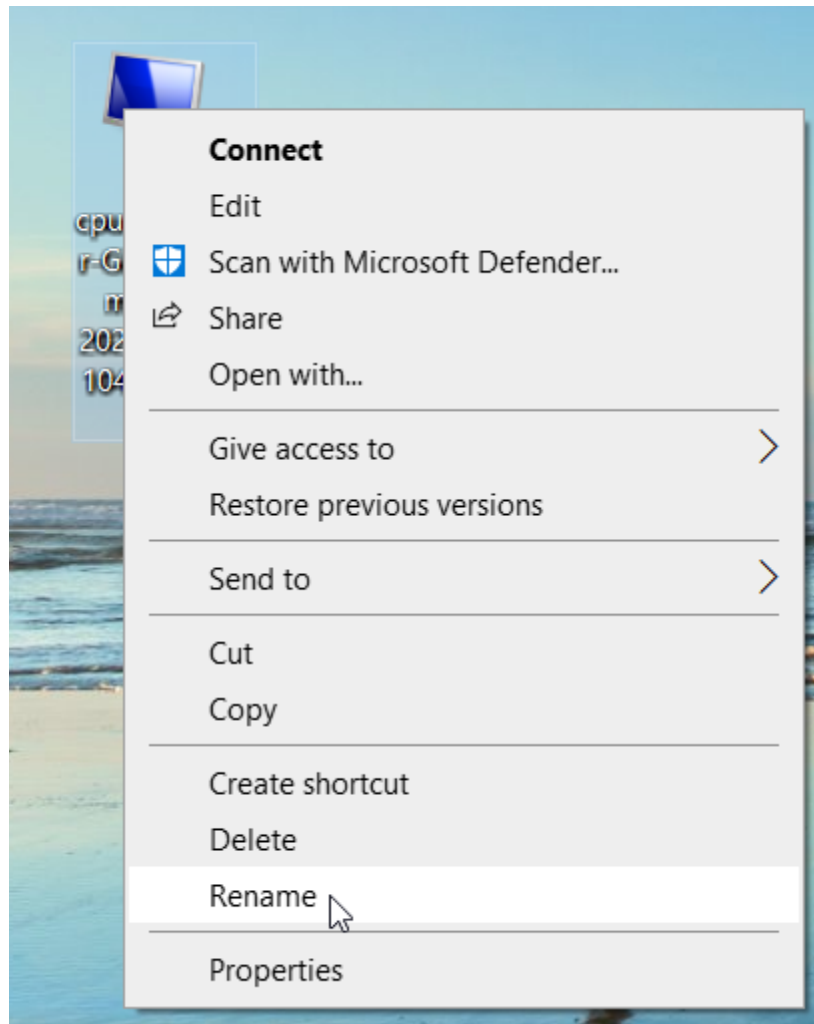
Right click on the RDP Download and press “Copy”.



Paste to desktop for easy access,



Right Click to rename,

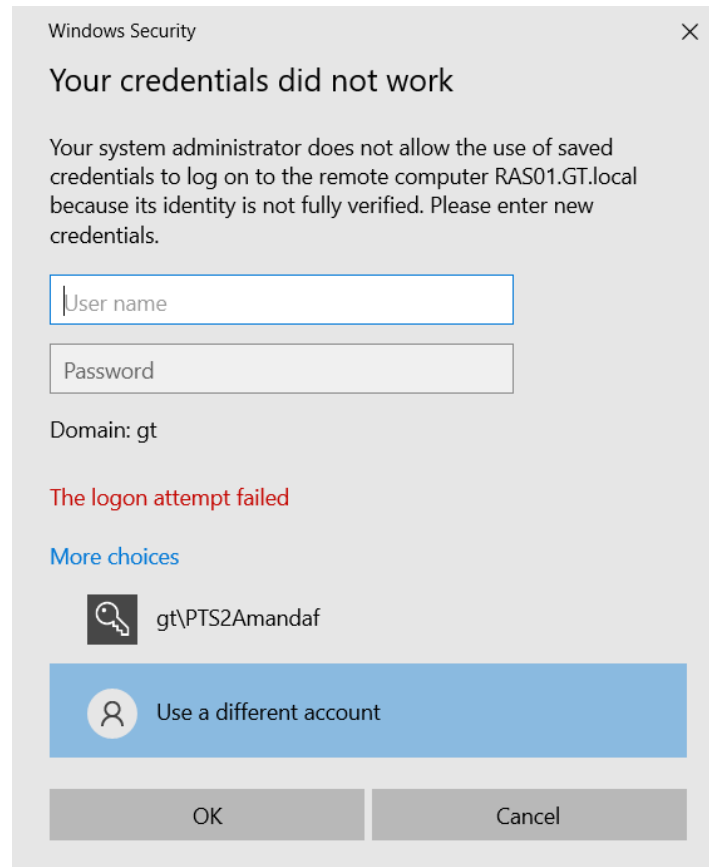


Example of what your shortcut should look like on your desktop.

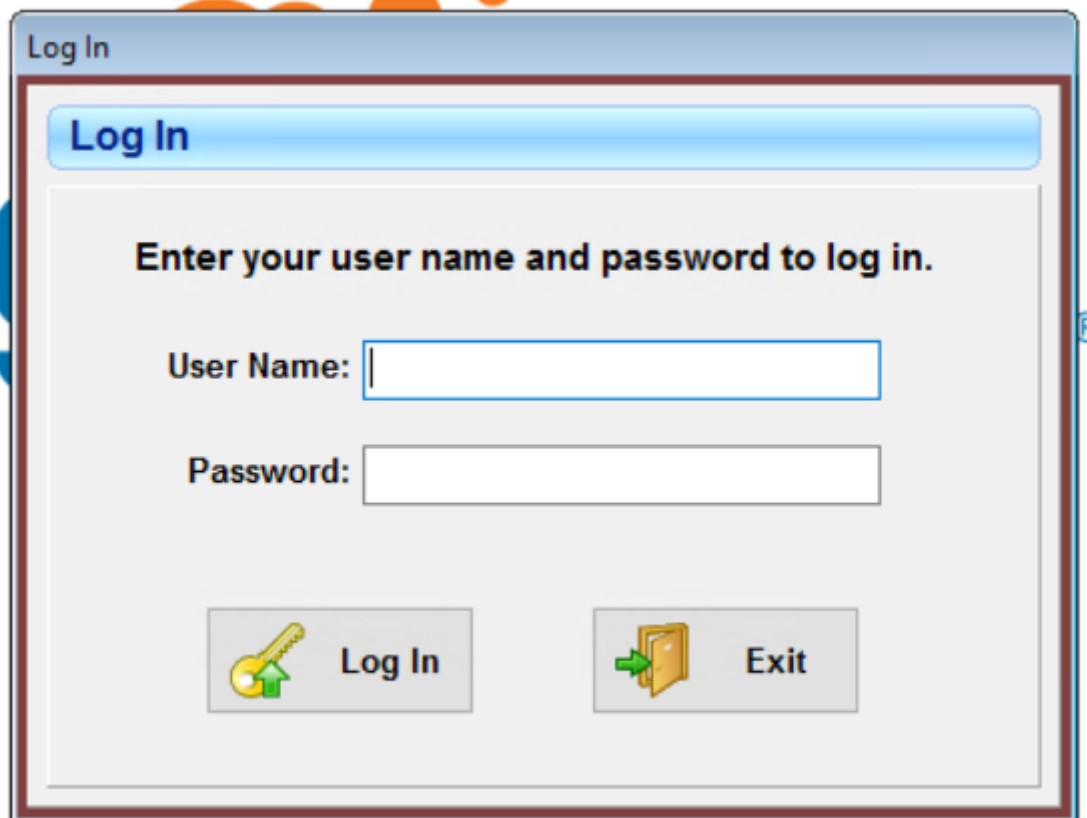


From now on, you will use this shortcut to access the system instead of going to the portal every time.

Double Click on the TTS Cloud shortcut to open the program. You will be asked to connect to the portal with the username and password you used above.



Once the portal is connected, the Tool Tracking System will appear with its own login,





Log In

Log In

Enter your user name and password to log in.

User Name:

Password:

 **Log In**  **Exit**

Your Order Acknowledgement email will contain an Admin login. Use these credentials if you are logging in for the first time. Otherwise, someone from your organization will provide you with your login details that were created in your Employee Profile.

Another way to access your Cloud system is by going to

Web.gigatrak.cloud

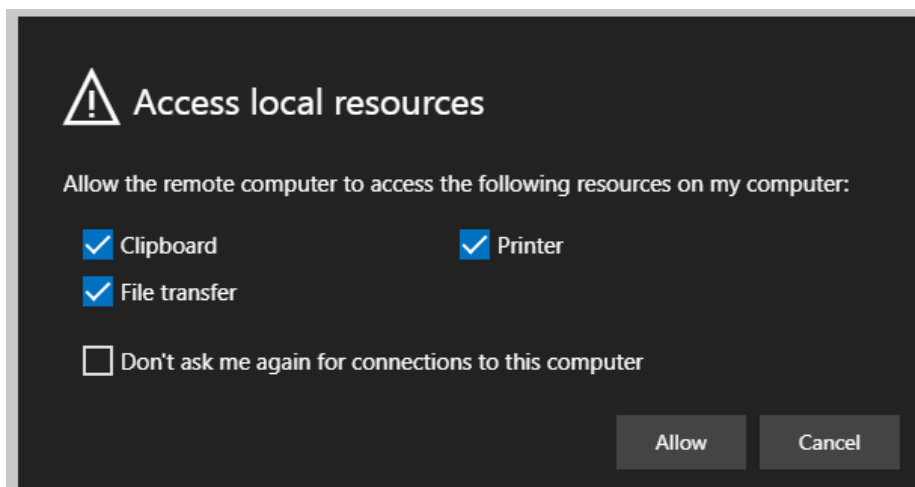
This allows you to open the program directly in a web browser instead of downloading the portal.

Once you get to web.gigatrak.cloud, login using the credentials we have given you. This will start with the gt\



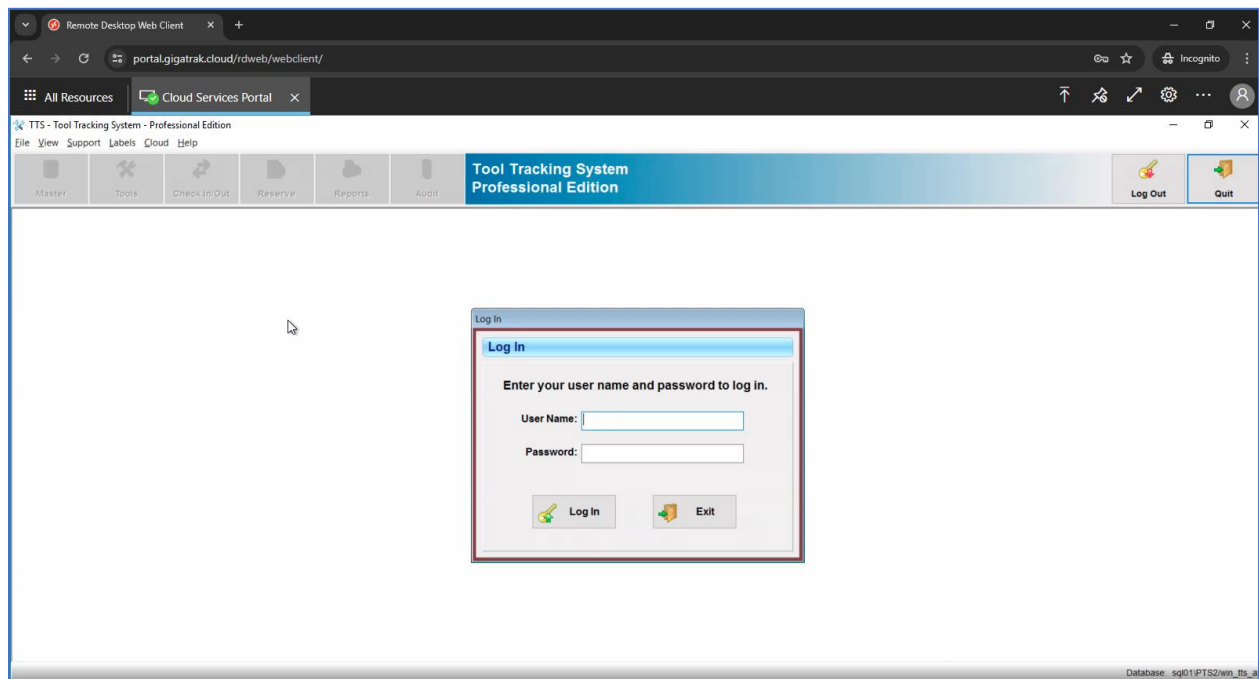
The image shows a dark-themed web sign-in page. At the top left, the text "Sign in" is displayed in a large, white font. Below this, there are two input fields. The first is labeled "Username" and contains the text "gt\PTS2Amandaf". The second is labeled "Password" and contains a series of dots representing a masked password. At the bottom left, there is a link for "Privacy_policy". At the bottom right, there is a blue button labeled "Sign in".

Once logged in, click on the WinTTS icon. Allow access to all resources and press "Don't ask me again for connections to this computer".



The image shows a Windows security dialog box titled "Access local resources". It features a warning icon (a triangle with an exclamation mark) on the left. The main text reads "Allow the remote computer to access the following resources on my computer:". Below this, there are four checkboxes, each with a blue checkmark: "Clipboard", "Printer", "File transfer", and "Don't ask me again for connections to this computer". At the bottom right, there are two buttons: "Allow" and "Cancel".

The Tool Tracking System will now open in a new tab within the browser.



Login using the default Admin login provided in your Acknowledgement email. Otherwise, someone from your organization will provide you with your login details that were created in your Employee Profile.

The web browser interface can be easier to access. However, the downside of logging in via the web, is that it does not easily access your computer's printers. Therefore, if you are printing labels, reports, or lists, you should use the portal.gigatrak.cloud to connect to the system instead of the web browser version. It is also more difficult to upload photos, documents, imports, and save reports through the web browser interface.

IMPORTANT: There are TWO logins to connect to your Tool Tracking Cloud database. The first login connects you to the Cloud. This login will always start with "gt\" and cannot be changed (password can be changed on login page). The second login gets you into the actual system and should be unique to each individual (these logins are created in the system under File-Employee Administration). If you are logged in with one of the RDP logins, and someone else logs in with the same login credentials, you will be kicked out and the new user will completely take over your session. Please be careful sharing RDP logins due to security risks.

For questions, please email training@gigatrak.com or call 262-657-5500 ext. 3