



**TOOL TRACKING MOBILE
APP QUICK START GUIDE**

TOOL TRACKING MOBILE APP QUICK START GUIDE

SOFTWARE DOWNLOAD

Download the app from the Google Play store on Android, or the Apple store on Apple devices. The app can be found by searching for “GigaTrak” and will be called “GigaTrak TTS Mobile”.

EASY QR CODE SETUP

Using the PC application, we can generate a QR code that you can scan using your device’s camera to quickly connect to your database. This works for both Cloud and On-Premise solutions.

First, log into the PC Program as the Admin, then go to File -> Device Administration. Click on the QR Generator button.

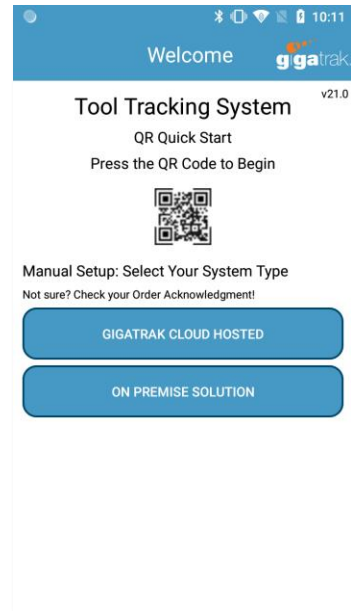
FIELDS

- **Scanner Type** – If using a device with a built-in Laser scanner, choose Laser Scanner. If using a device without a built-in scanner, choose Camera Scanner to use the device’s camera to capture barcodes.
- **Device Name** – if a device name is not specified, the default device name for your device will be used.
- **Include Activation Pin** – If this option is Checked, you will not have to manually activate the device from the Device Administration page.
- **Download / View Tool Photos** – If you want to view or add tool photos from your device, make sure this option is checked.
- **Auto Search Device Name** – If device name is taken, this option will automatically re-name the device instead of rejecting due to an identical Device Name.
- **Partial Setup** – Choose an option here to pause during setup and choose options on the Device instead of specifying them here.
- **Connection Type** – Choose between a Live connection to the database, Wireless Batch, Wireless Limited Batch, or Kiosk mode. Manual Batch mode is not available in the Cloud.
- The Customer ID field can not be changed in the Cloud environment.

The screenshot shows the 'Device QR Generator' dialog box. It is divided into several sections: 'System Type' (radio buttons for 'Cloud Hosted' and 'Self Hosted - On Premise'), 'Connection Type' (radio buttons for 'Live', 'Wireless - Batch', 'Wireless - Limited Batch', and 'Kiosk'), 'Scanner Type' (radio buttons for 'No Scanner', 'Laser Scanner (If Applicable)', and 'Camera Scanner'), 'Connection Information' (text boxes for 'Customer ID' containing 'PFS2' and 'Device Name'), and 'Partial Setup' (checkboxes for 'Include Activation Pin', 'Download / View Photos', and 'Auto Search Device Name', and radio buttons for 'Do not Pause during Setup', 'Pause on Settings Screen', and 'Pause on Service/Device Screen'). At the bottom are 'Cancel' and 'Generate Barcode' buttons.

Once all settings have been chosen, click on Generate Barcode. This will print out a QR Code.

On your device, open the GigaTrak TTS Mobile application. Click on the QR code, and it will open your Device's camera. Scan the QR code to instantly apply all settings and connect your handheld to the Device Service. Click on Complete Setup, then you can log in with any credentials found under the File > Employee Administration page on the PC application.



MANUAL SETUP

If you do not wish to use the QR Generator to connect, you can perform a manual setup from the device.

Open the GigaTrak TTS Mobile application on your device, then click on the GigaTrak Cloud Hosted button to begin. Choose your connection type by clicking the blue button next to your desired setting.

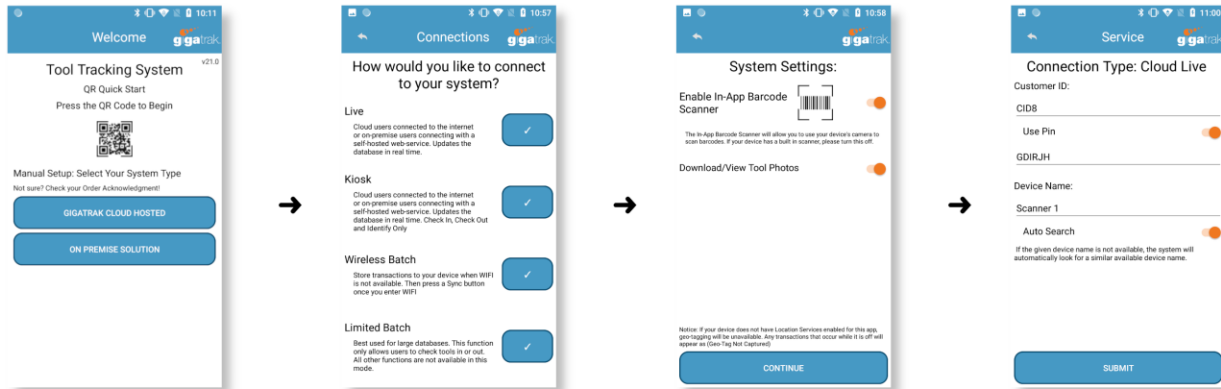
On the following page, choose whether to Enable In-App barcode Scanner – The In-App Scanner uses your device's camera, so make sure this option is OFF if your device is a scanner. Next, choose whether you would like to Download/View Tool Photos on the device. If you want to use your Device's Camera to take pictures of Tools, be sure this option is on. Click on Continue.

The top of this page will ask for a Customer ID. This information can be found in your confirmation email, and is the beginning of your gt\ username credentials. For example, if your username is gt\PTS2User1, enter PTS2 as the Customer ID.

Your device pin can be found in the PC Application by logging in as the Admin and navigating to the File > Device Administration page. If you do not include this device pin, you will have to manually activate your device from the Device Administration page before you can log into the application.

Give your device a name, or a default name will be used. If Auto-Search is on and the Device Name is already taken, the next available device name will be taken.

Click the Submit button to complete setup.



DEVICE MANAGEMENT

To manage your devices, Log into the PC application as the Admin and go to the File -> Device Administration page. Your number of active and available licenses will be shown. From this page you can inactivate old devices, and activate new devices. Note there is a 24 hour delay when performing certain actions to prevent a single license being used on multiple devices.

The screenshot shows the 'Device Administration' window with the following details:

- Buttons:** Activate, Activate RFID, Inactivate, Delete.
- Licenses:**
 - # Device Licenses: None
 - # RFID Licenses: 5
 - Active Devices: 59
 - Active RFID Devices: 1
 - Available Licenses: None
 - Available RFID Licenses: 4
- Fields:** Refresh Device List, Device Pin: [xxxxxx], Save Pin, QR Generator.
- Table:**

Device Name	Last Synced	Inactivated	RFID	Active?
Apple Bob	05/21/2019 12:32:16 PM		No	Yes
Apple iPad11,3	12/03/2021 7:26:33 PM		No	Yes
Apple iPad11,3 1	12/06/2021 11:47:30 AM		No	Yes
Apple iPhone	07/02/2021 3:55:44 PM		No	Yes
Apple iPhone 7	07/02/2021 2:15:51 PM		No	Yes
Apple iPhone11,8	04/08/2021 1:01:55 PM		No	Yes
Apple iPhone11,80	12/30/2020 10:47:04 AM		No	Yes
Apple iPhone9,3	01/13/2022 9:16:18 AM		No	Yes
Apple iPhone9,3 1	02/09/2022 11:40:11		No	Yes

SUPPORT

This quick-start guide is meant only for quick system setup and usage. Please refer to the User Manual for a more detailed explanation of the system. If you have specific questions, please contact support@gigatrak.com