



**TTS DEVICE BATCH QUICK
START GUIDE AND SYNCING**

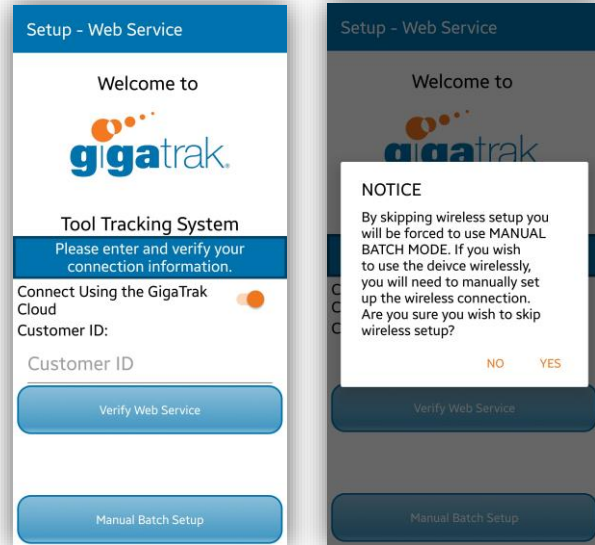
TOOL TRACKING MOBILE APP QUICK START GUIDE

STEP 1

Download the app from your devices App Store. Please note that Manual Batch is only available on Android devices. The GigaTrak TTS Mobile App can be found by searching for “GigaTrak” or “Tool Tracking”. Once downloaded, open the app to start the in app setup process.

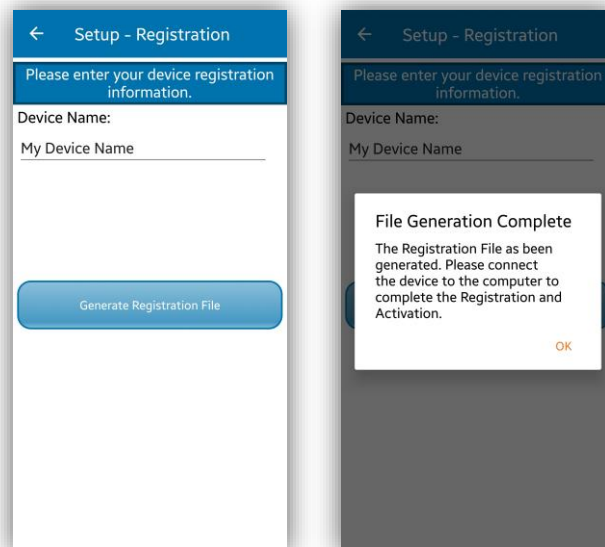
Now select the Manual Batch option.

NOTE: You will then be warned about using the manual batch mode. You **must** select “Yes” to continue setting up the device in manual batch mode.



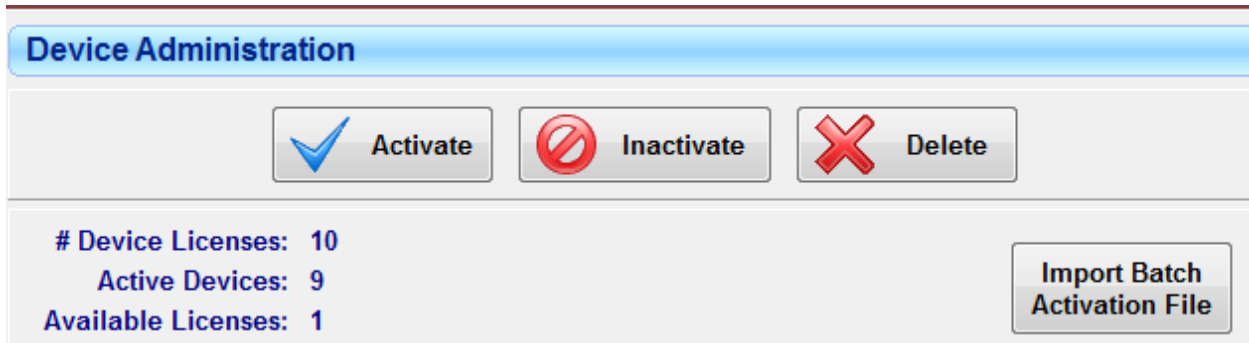
STEP 2

After selecting Manual Batch Mode is the Registration setup screen. Here you will enter the name you wish for your device to show up with and press the Generate Registration Button. Once the file has been generated, you will receive confirmation.



STEP 3

Connect the device to the computer running your tracking system.
Log in as "ADMIN" and go to the File -> Device Administration Menu
Now Select the Import Batch Activation File.

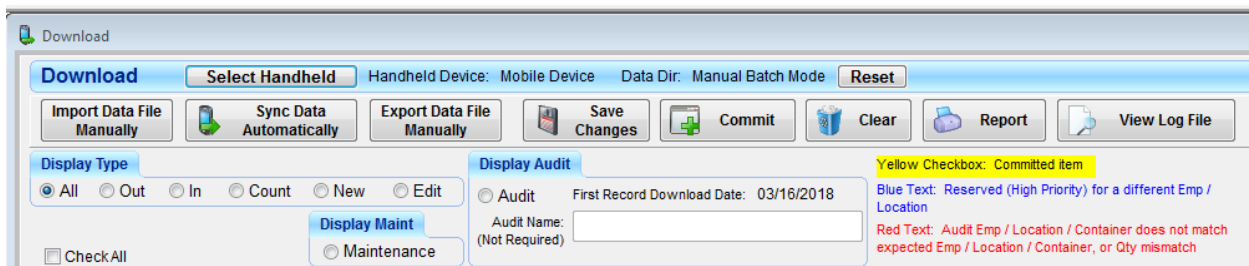


A menu will appear for you to locate your device. Select the name of your device from the list. (Same name that was created in step 2) As long as you have any available license, your device will be added to the list of devices with an active status.

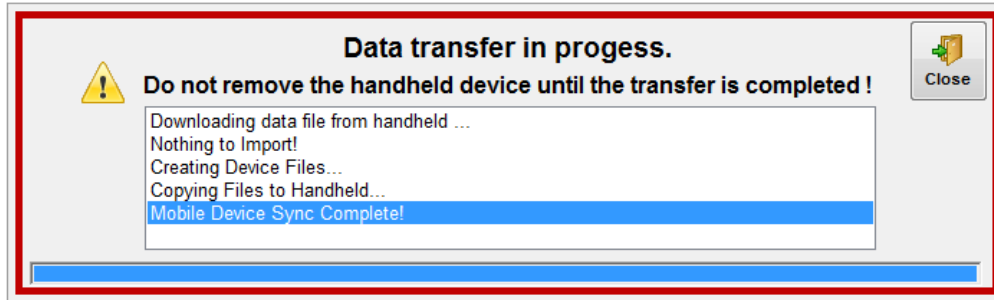
**Please note that if you change the device name in the future you will need to repeat this process for the device to be able to sync properly.*

STEP 4

Once the device is registered, you can close the Device Administration Menu and navigate to the Download Screen on the PC version of the program.



Once on the Download Screen, select the Select Handheld Button. Now, select Mobile Device from the list and press the X in the top right hand corner of the popup menu. Once you have selected Mobile Device, you can now perform the first sync of the device. Press the Sync Data button to sync the device for the first time.



Once you see the Mobile Device Sync Complete! Notification, you can close the Data Transfer screen on the PC.

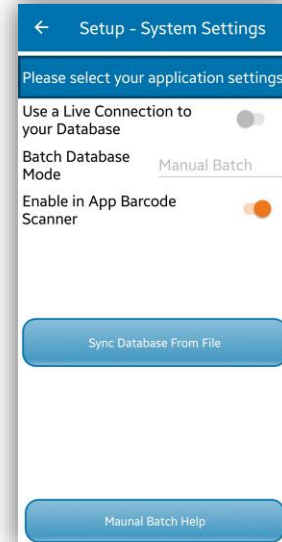
STEP 4

After registration and syncing of the device is complete, you will see the Application Settings. Here you be able to set up the device how you would like to use it.

**Please note that most options on this screen will be greyed out due to the fact that you are using the manual batch setup.*

Choose to enable in App Barcode Scanner. If you plan to use your device's camera to scan barcodes, you will need this option on. If you are using any of the devices with the built in scanners, such as the NX2, Zebra TC20 or the Honeywell CT60, we highly suggest turning this option off.

Once you have your settings selected, press the Sync Database from File button. Now select 'Yes' on the popup menu to begin the first sync for your device. Once the sync is complete, you will be able to login and begin using the device application.



SYNCING

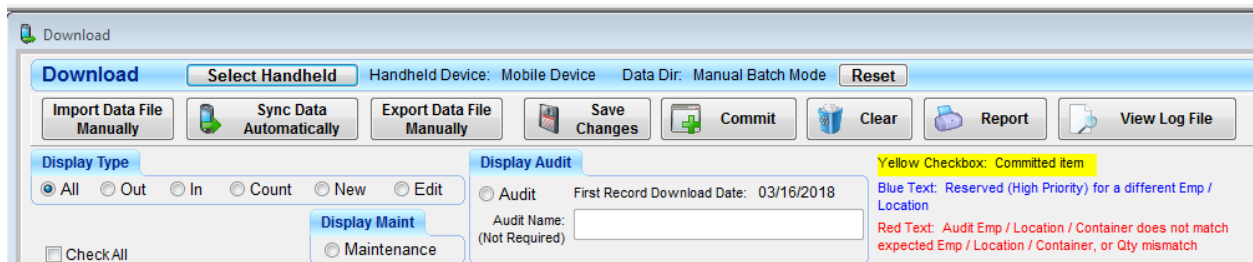
STEP 1

Navigate the device to the Login Screen.

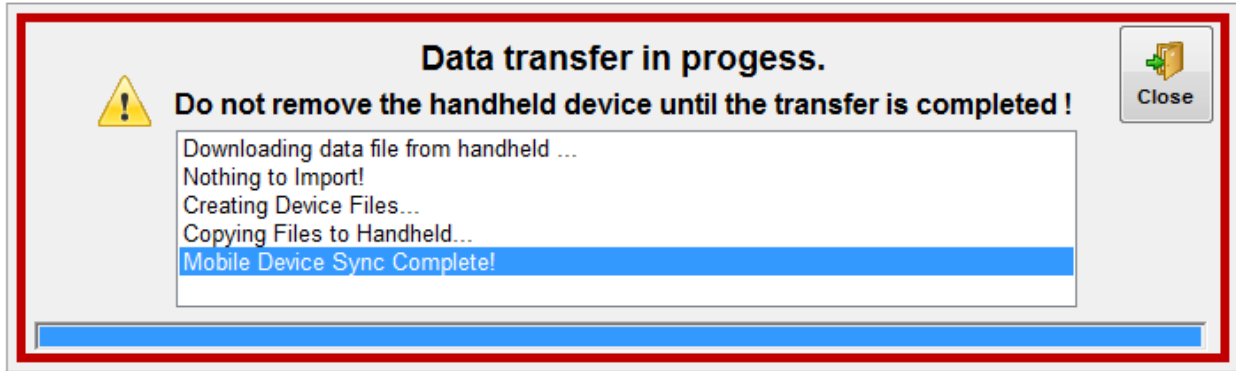


STEP 2

Connect the Device to the computer running the tracking system. Now, navigate to the Download Screen on the PC version of the program.



Press the Sync Data button to sync the device.

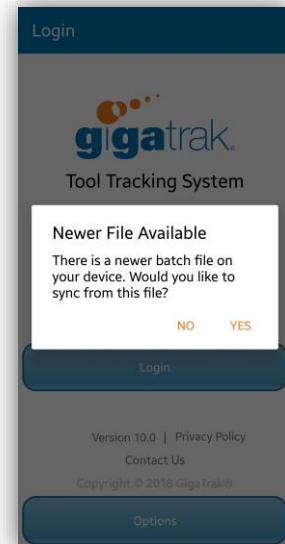


Once you see the Mobile Device Sync Complete! Notification, you can close the Data Transfer screen on the PC.

STEP 3

A notification will now appear on your mobile device that there is a newer file available, press 'Yes' to sync the device with the new information.

Once the sync is complete, the device is up to date and ready for use.



SUPPORT

This quick-start guide is meant only for quick system setup and usage. Please refer to the User Manual for a more detailed explanation of the system. If you have specific questions, please contact support@gigatrak.com or at 262-657-5500 x2.