



**GIGATRAK CLIENT INSTALL
HANDHELD TERMINAL**

GIGATRAK CLIENT INSTALL HANDHELD TERMINAL

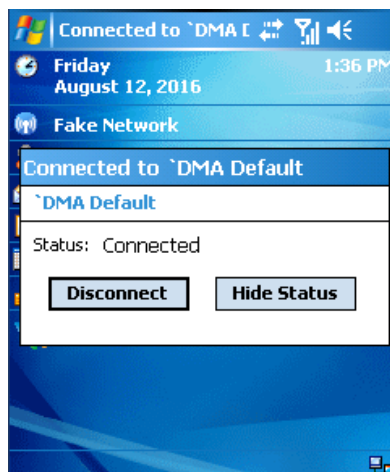
GigaTrak's DTS system works wirelessly on mobile handheld terminals to administer changes to the database.

The Handheld Configuration function allows you to synchronize the data that was collected on the handheld with the main application database.

If you have already established the communication connection between the handheld terminal and the PC application, using either Microsoft ActiveSync or Microsoft Windows Mobile Device Center, perform the following steps to install the handheld terminal with the STS application. If NOT, first establish communication link by referencing Appendix A at the end of this document.

INSTALLATION OF HANDHELD APPLICATION

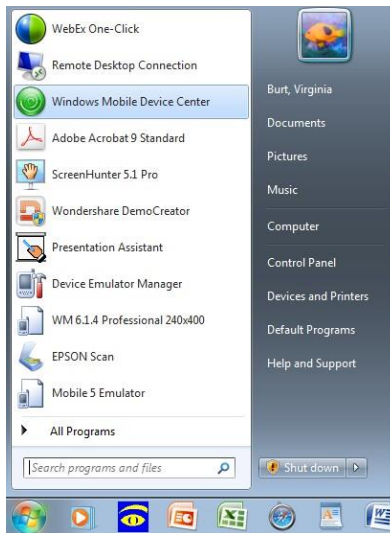
1. Windows Mobile Device Center or Microsoft ActiveSync should automatically initiate, on both the Handheld Terminal and the PC, once the handheld terminal is connected to the PC.
 - a. On the handheld:



- b. On the PC:



If the Windows Mobile Device Center or Microsoft ActiveSync does not automatically initiate once the handheld terminal is connected to your PC, you may need to initiate the application manually from the PC:

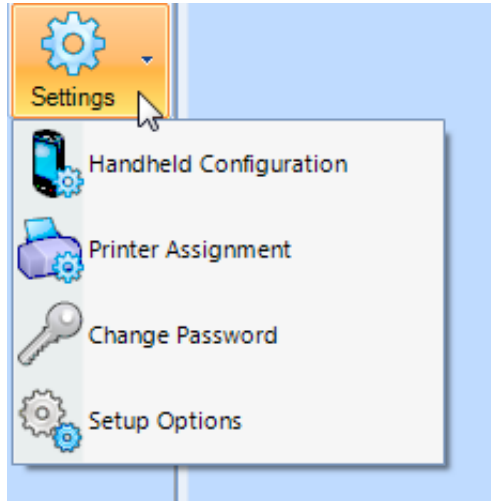


2. When Windows Mobile Device Center has connected with the handheld terminal, it will indicate “connected” on the Windows Mobile Device Center screen. You will see a similar “connected” indicator if you’re using ActiveSync.

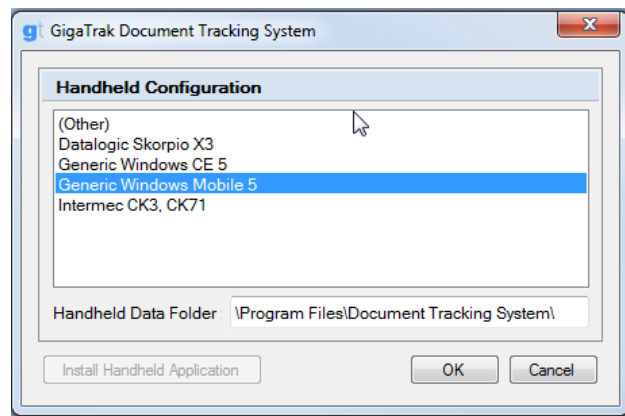


3. For Windows Mobile Device Center, select “Connect without Setting Up your Device”. For ActiveSync, select “Connect as Guest”.
4. Now, minimize the communication screen (Windows Mobile Device Center or ActiveSync). It must continue to run in the background in order to maintain the communication connection to the handheld terminal.

- From the PC Screen, open Document Tracking System. When opened, go to the main menu bar, and select Admin→Handheld Configuration.

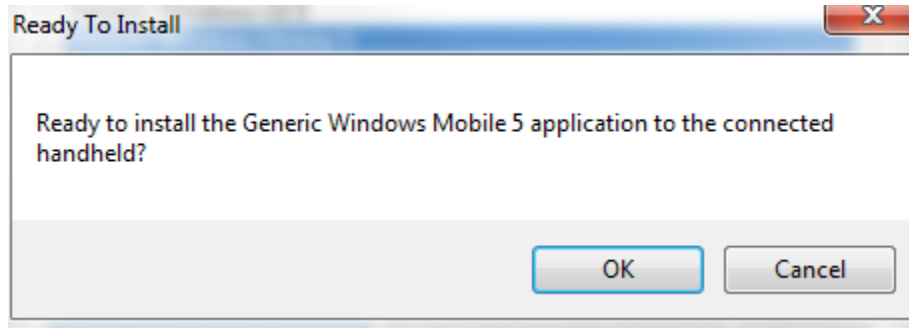


- After selecting “Handheld Configuration”, the screen below will appear:

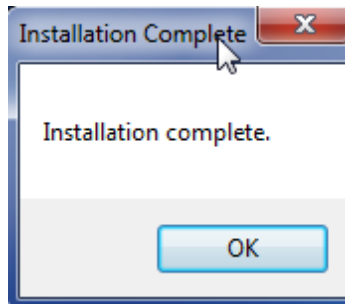


- Select the handheld unit. The Handheld Data Folder field will then change to reflect where on the handheld terminal the application will be saved.
- After selecting the correct handheld, click the “Install Handheld Application” button.

9. The below message will pop up after clicking the “Install Handheld Application” button. If you are ready to install and are synced up, click “OK”.



10. When the install is finished you should see this screen.



11. To connect to the database wirelessly, see appendix B.

APPENDIX A: ESTABLISHING CONNECTION BETWEEN HANDHELD AND PC

Either Microsoft ActiveSync or Windows Mobile Device Center MUST be installed on your PC workstation in order to establish the communication link between the PC workstation and the handheld terminal. BOTH programs are included with the GigaTrak application download folder that was sent to you via the file download *.zip application when you purchased the GigaTrak application.

- If **Windows Vista or newer** is installed on the PC workstation, **Windows Mobile Device Center** is the Communication program that links the mobile handheld terminal to the workstation. Make sure **Windows Mobile Device Center** is installed on the PC Workstation.
- If **Windows XP** is installed on the PC workstation, **Windows ActiveSync** is the Communication program that links the mobile handheld terminal to the workstation. Make sure **Windows ActiveSync** is installed on the PC Workstation.

The first time the handheld terminal is connected to the PC workstation, an initial message may appear on the lower Windows menu bar indicating a new USB device has been found and drivers are being installed. Once this is complete, the Microsoft communications program should initiate.

If **Windows & Windows Mobile Device Center** is used, the following screen will appear once the Handheld Terminal is connected (via cable direct from the Handheld Terminal to the USB Port on PC Workstation); **OR**, once the Handheld Terminal is “docked” in its docking station and the docking station is connected via cable direct to the USB Port on the PC Workstation.



Once the communication connection link is established (this should happen automatically) between the Handheld Terminal and the PC Workstation, the “**connected**” checkmark will appear. (If the connection doesn’t ‘automatically’ occur when the cable connections are made or the terminal is docked, disconnect, make sure the face of the device is on and then reconnect the cables or re-dock the handheld to initiate the link.)

- If you are using **Windows Mobile Device Center**, Select “Connect without setting up your device”, then, MINIMIZE (but, do NOT Close) the window.
- If you are using **Microsoft ActiveSync**, Select “Connect as Guest”, then, MINIMIZE (but, do NOT Close) the window.

APPENDIX B: CONFIGURE HANDHELD MOBILE WIRELESS DATA TERMINAL

If using a mobile wireless data terminal, the terminal will also need to be configured to function with the TTS database.

1. Install the client onto the terminal, following the instructions above.
2. Once installed, select "Start" → "Programs" → "Document Tracking"
3. From the TTS Login Screen, select "Admin"
4. The admin password is: "gigadocs"
5. Fill in the SQL database info:
 - a. SQL Server Name/IP address as it appears on SQL Server Login Screen
 - b. Database Name as it appears on the SQL Server the default is "dts"



Admin

Admin

SQL Server Name / IP Address:

Database Name:

<- Back to Menu Save



6. After entering in the information, select "save".
7. Select "Back"
8. If all parameters are correctly configured, and if employees have been set up in the PC application, the terminal will connect directly to the SQL database and you will be able to log on and access the DTS handheld functions.