



**GIGATRAK CLIENT INSTALL  
HANDHELD TERMINAL**

## GIGATRAK CLIENT INSTALL HANDHELD TERMINAL

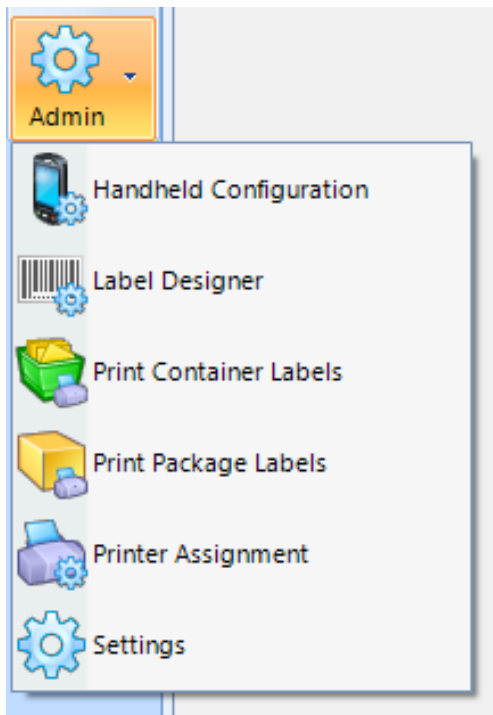
A mobile, handheld data “terminal” runs like a mini PC with an abbreviated version of Windows OS (CE). GigaTrak products have client applications that can run on these terminals and supplement the GigaTrak main PC application functionality.

The mobile client software is included with the main application software license download, if you purchase the handheld terminals. You will need to install this client software on the handheld terminal.

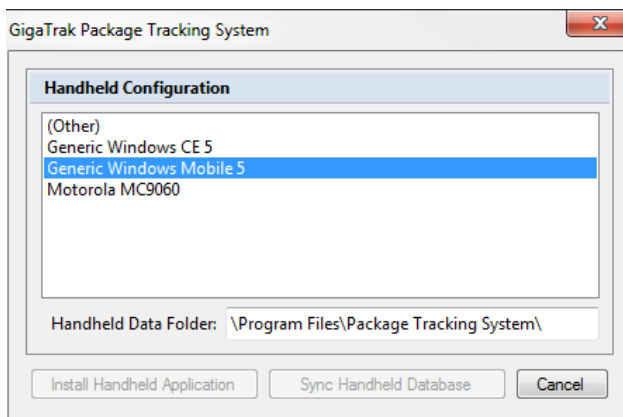
---

### INSTALLATION OF HANDHELD APPLICATION

For installing the handheld application for the Package Tracking System, you must first begin in the PC application. When opened, go to the main menu bar, and select Admin→Handheld Configuration.



After selecting “Handheld Configuration”, the screen below will appear:

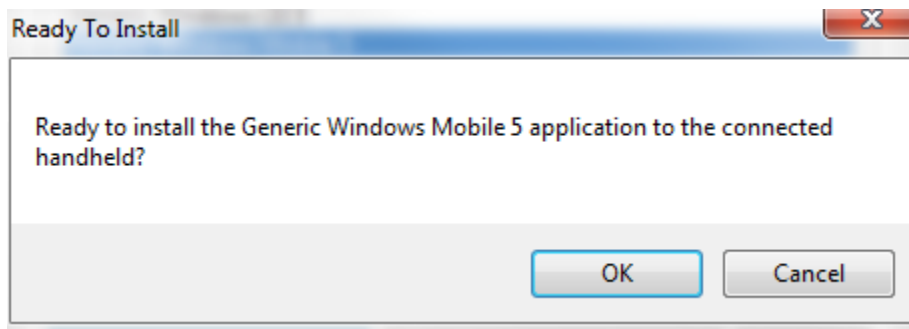


You must first select the handheld unit you purchased (or the existing handheld you wish you use). The Handheld Data Folder field will change to reflect where on the handheld terminal the application will be saved.

After selecting the correct handheld, click the “Install Handheld Application” button.

**\*NOTE:** In order to install the handheld application, you must have the handheld terminal docked and connected through Windows Mobile Device Center.

The below message will pop up after clicking the “Install Handheld Application” button. If you are ready to install and are synced up, click “OK”.



---

## HANDHELD

After the installation is complete, a program will be saved on the handheld for the Package Tracking System application.

Select the Package Tracking System icon on the handheld. It will notify you that there is not a database currently located on the device and it will ask you to download the PC data with the handheld application.

To do this, refer back to the Handheld Configuration tab. There should be a middle button that says “Sync Handheld Database”. Click the button and it will ask, “Ready to sync with the connected handheld?” If the handheld is docked and ready to sync, click “OK”. A pop-up will appear when sync is complete.

Once the database has been downloaded to the handheld unit, you should be able to use to the handheld application to scan packages/containers.