

Overview

Each Zebra printer provided with many of our software systems offers excellent performance at a reasonable price. For documentation, Zebra includes both quick installation and a full user's manual on the CD provided with the printer. The challenge is that print driver setup information is more difficult to find and first-time users need to understand the unique issues to configure the driver properly.

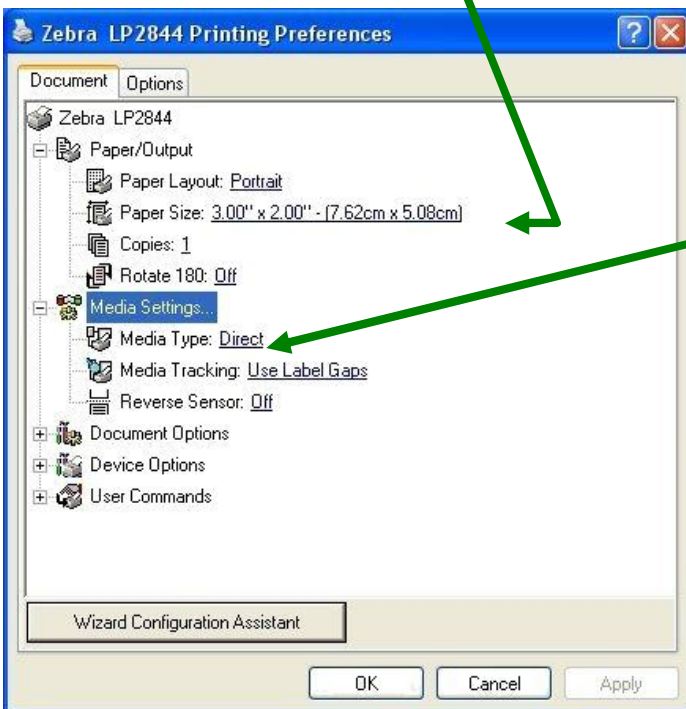
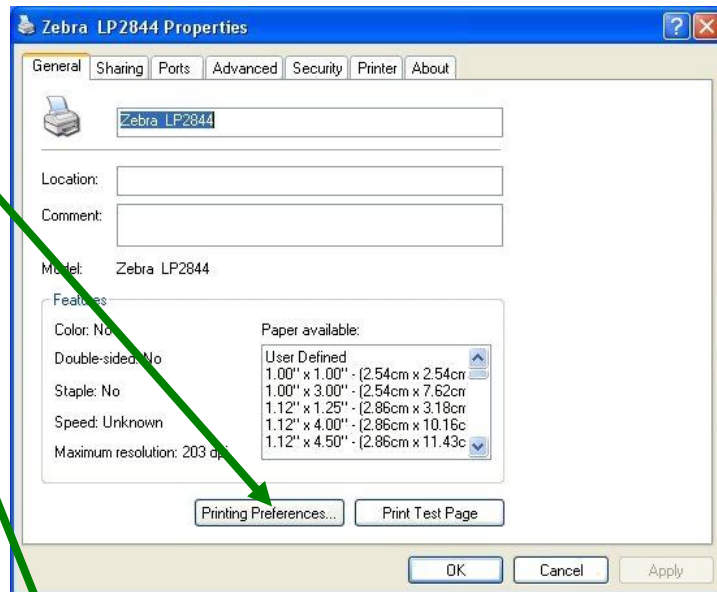
Configuring the Zebra Print Driver

Zebra's print driver is standard across most of their desktop and tabletop products. Familiarize yourself with the driver by opening the *Printers and Faxes* option on the *Start-Settings* menu and highlighting the Zebra Print Driver.

By right-clicking the driver, you can then select *Properties* and the dialog box will appear as shown. To proceed, select the *Printing Preferences* option button shown on the *General* tab of the box.

Make sure to change the *Paper Size* to the size to match that of the label inserted into the Zebra Printer.

NOTE: If the label size you have is NOT listed, you must manually create a USER DEFINED label that matches the exact size being used in the printer!!!



Also, set the *Media Type* option to either Direct (direct thermal labels with no ribbon) or Thermal Transfer (standard labels that require a ribbon). LP desktop printers are Direct ONLY. TLP printers can do either mode.

Be careful! Don't change any other settings that you do not know what they will do! Read the manual for any questions. Make sure to *Apply* your setting changes and exit.