



ToolWatch® to GigaTrak® TTS Tool Import:

**ToolWatch® is a registered trademark of ToolWatch® Corporation**

GigaTrak® TTS includes an import function for importing data from ToolWatch® Corporation's ToolWatch™ software.

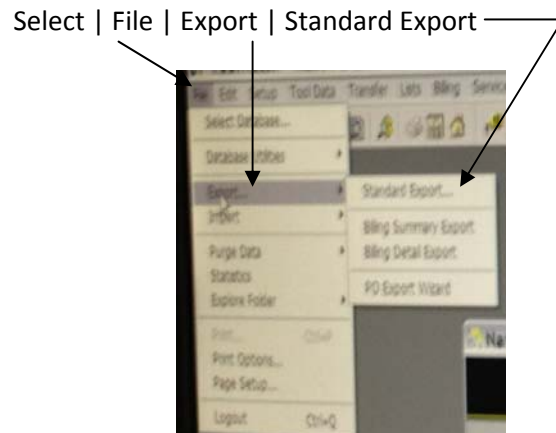
This is found in GigaTrak® TTS under: FILE Tab Menu | Import from ToolWatch™

Instructions for the import can be printed directly from this function. For additional assistance, the following representative screenshots, with guideline instructions, are provided:

**First the data has to be exported from ToolWatch®, a product of ToolWatch® Corporation**

**To do so, follow these steps:**

1. In ToolWatch®, a product of ToolWatch® Corporation, from the **main menu**,



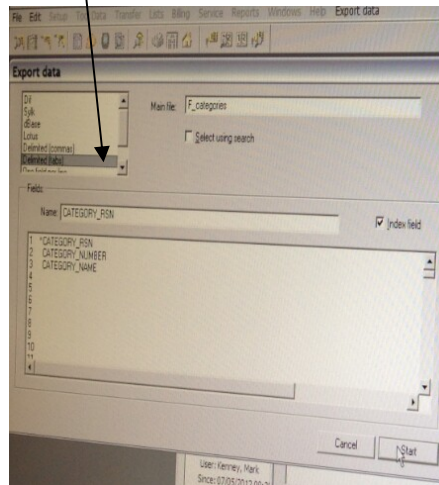
2. On the **Data Select screen**,

Select | Tool Tracking and Management | Click NEXT

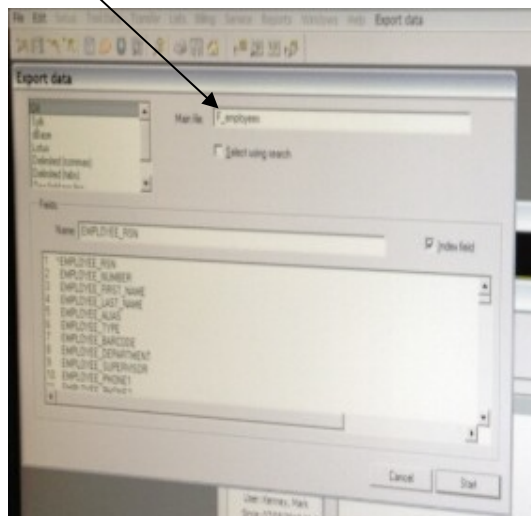


3. On the **Export Data** screen,

Select | **Delimited Tabs**



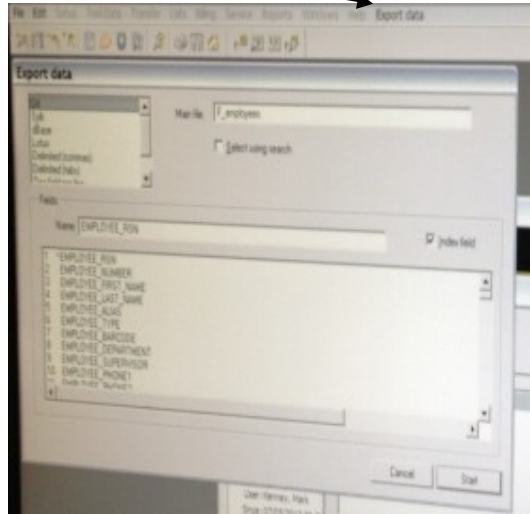
Enter a file name for the file you are exporting:



If it's: Categories, enter **F\_Categories**  
Employees, enter **F\_Employees**  
Inventories, enter **F\_Inventories**  
Locations, enter **F\_Locations**  
Products, enter **F\_Products**  
Tools, enter **F\_Tools**  
Lost Tools, enter **F\_LostTools**

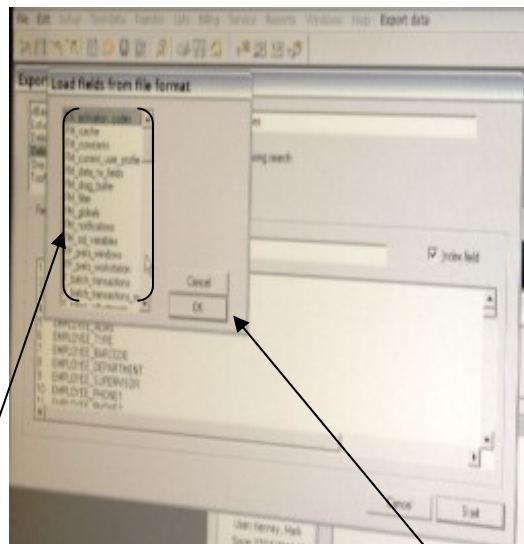
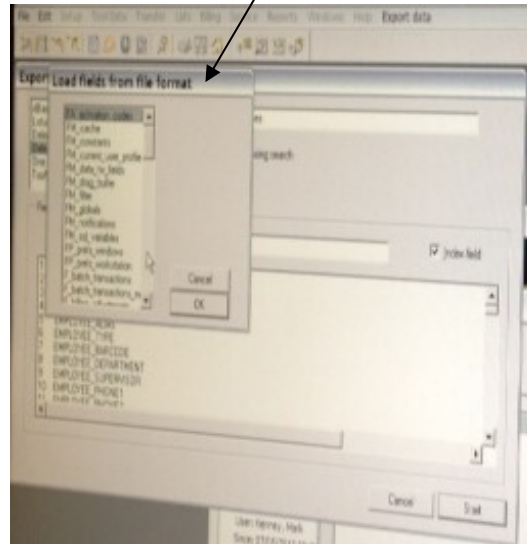


Select | **Export Data**





Select | **Load Fields (from the File Format)**

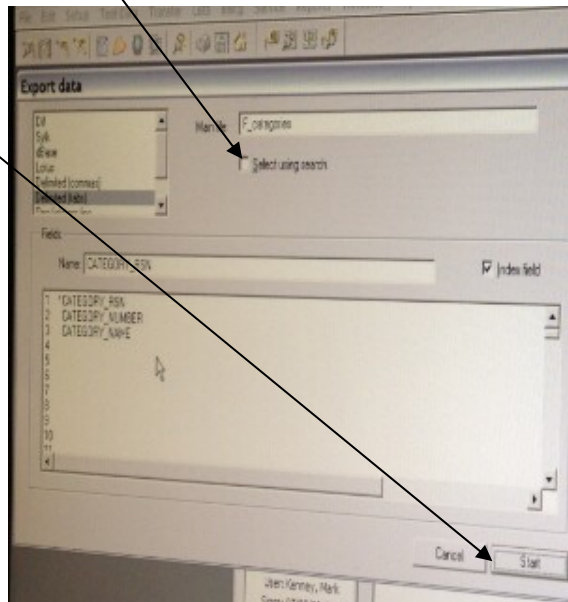


4. From file Listing, **Find and Select "F\_Categories"** | then, Click **OK**



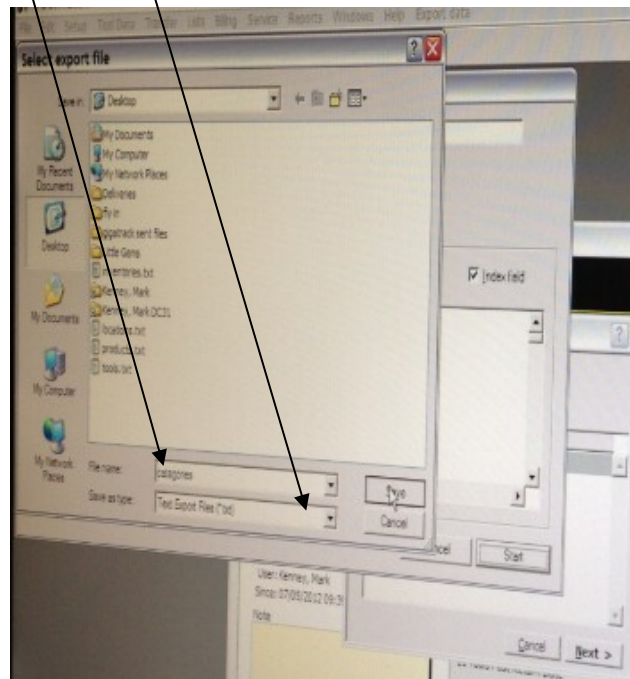
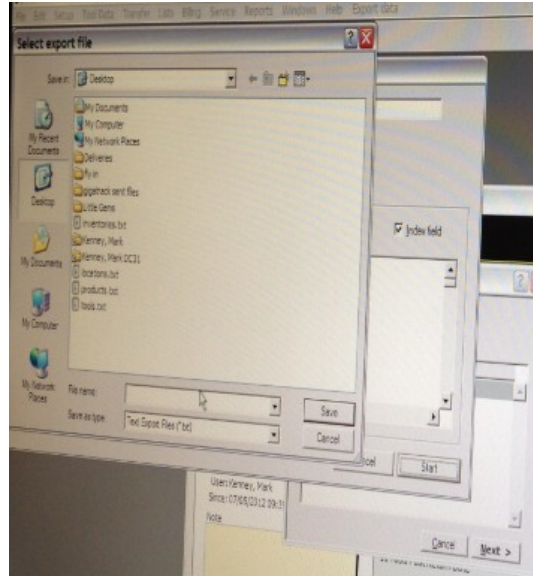
5. Make **SURE** "Select Using Search" is **UNCHECKED**

6. Click **Start**





Then, **Save As** 'categories.txt'





7. REPEAT Steps 4 through 7 for the following files:
- Employees
  - Inventories
  - Locations
  - Products
  - Tools
  - Lost Tools

Once the data files have been exported from ToolWatch®, a product of ToolWatch® Corporation, they can then be imported into **GigaTrak® TTS**.

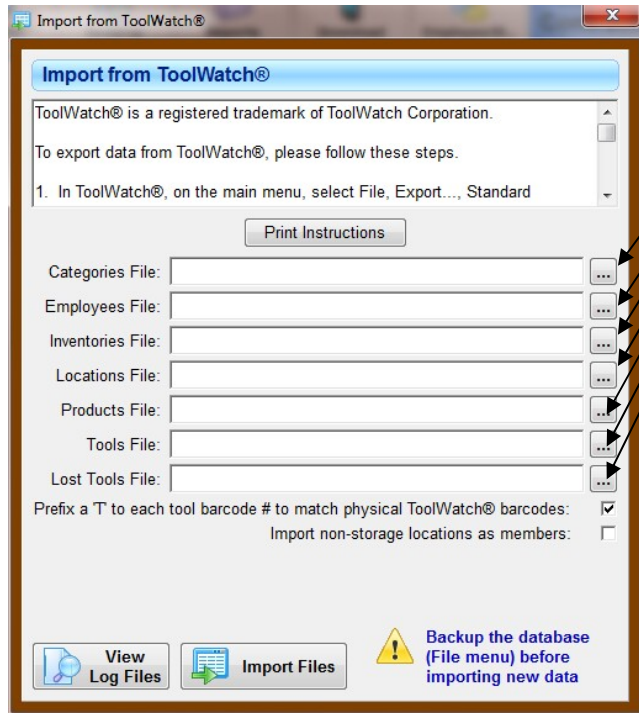
**- To Import the data into GigaTrak® TTS, load each file into its respective slot on the GigaTrak® TTS “Import from ToolWatch® “ screen:**

**From the Main GigaTrak® TTS Screen: Select | FILE Tab | Import from Toolwatch®**





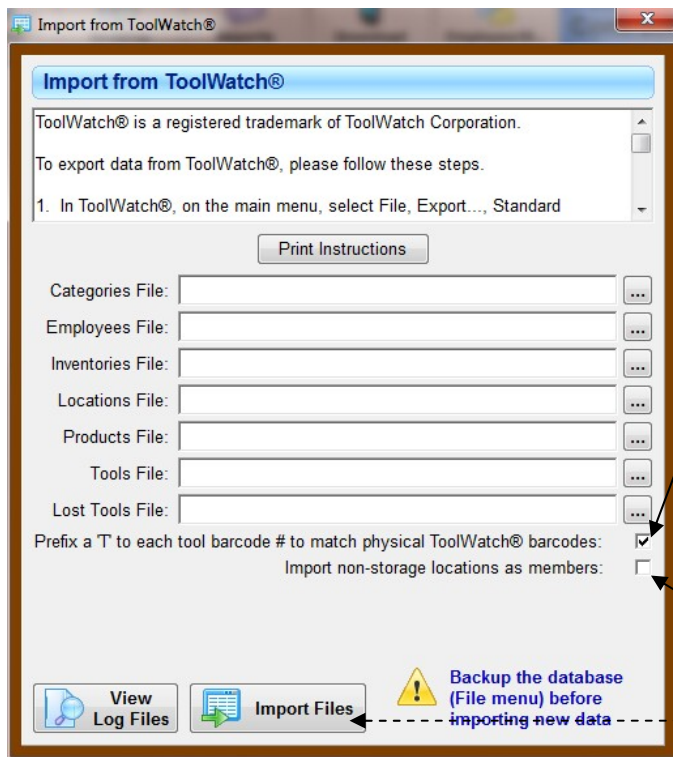
Locate the files that were imported from Toolwatch®, a product of ToolWatch® Corporation, and select the path for each, (where they were saved after the export in step 7) using the ellipsis blocks.





Check the tool barcode labels (IF they currently exist) that are on the existing tools. Determine whether or not they have a pre-ceeding “T” embedded in them. To do this, use a barcode scanner to SCAN the tool barcode label and observing the resultant value. If you’re not sure how to do this, contact GigaTrak Technical support for instructions.

If there is a pre-ceeding “T” embedded in the barcode label, also check this “Prefix a “T” to each tool barcode” box.



If this is **GigaTrak® TTS CE** (Contractor Edition), and if you are using ‘non-storage’ locations for tools within Toolwatch®, a product of ToolWatch® Corporation, there is also the option to import “non-storage” locations into the **TTS CE** “Member” function. (The “Member” function provides more detailed information than is available from the basic **TTS** “Location” function.)

Now, Select | Import Files

The Import should now be complete.