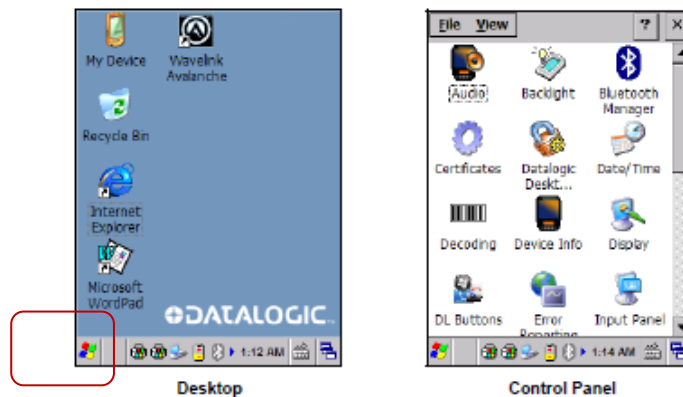


Supplement to main GigaTrak Skorpio Handheld Setup Installation Instructions:

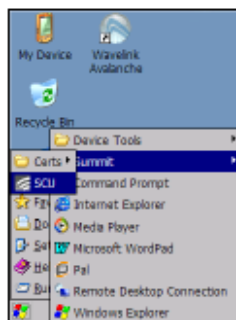
The Datalogic Skorpio is a Windows-style device. The Start Button is located at the lower, left most corner of the Task bar: The control panel offers access to terminal setup options:



There are 2 ways to access the Wireless Control Utility:

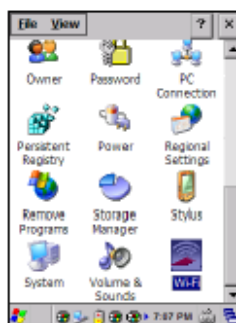
(Referenced from pages 68 – 72 of the SkorpioX3WindowsCE Users Guide)

Start > Programs > Summit > SCU:

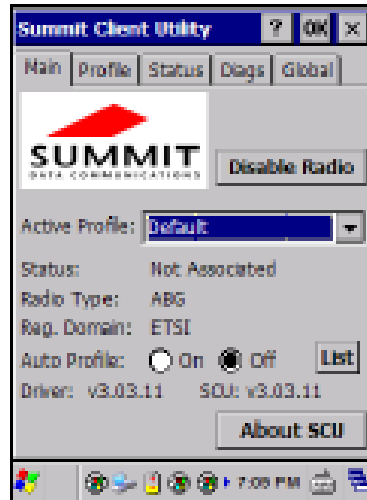


Or

From the Control Panel main window, double tap Wi-Fi to open the Summit Client Utility:

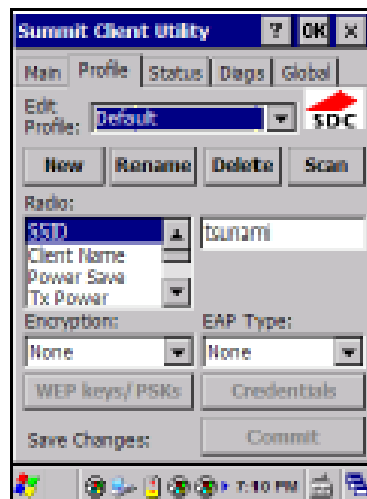


The SCU will open to the "Main" tab:



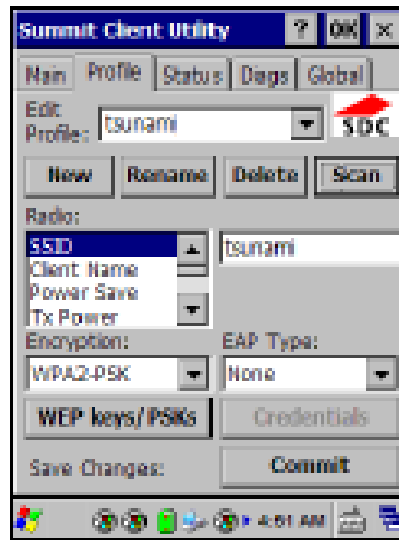
Summit Client Utility

1. To create a new profile, tap the "Profile" tab:



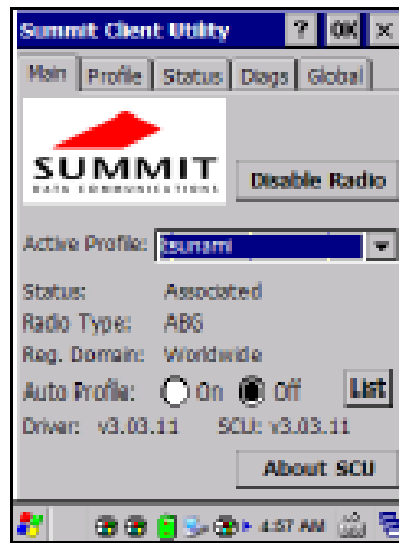
Information about the wireless network can be entered directly in the profile tab or by pressing "Scan" when the desired network ESSID is in range.

- When finished, click "Commit" to save your settings.

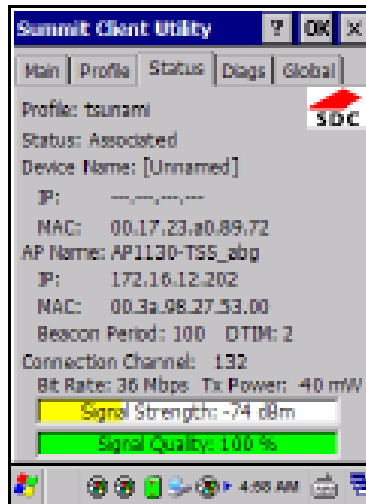


Return to the "Main" tab, if you have not previously selected "Commit" you will be prompted to save your changes.

At the "Main" tab select the profile you just created. If you used the "scan" button the desired profile will have the same name as the ESSID.



Use the "Status" tab to check connectivity to the network.



More detailed information about the applet for radio configuration can be found at <http://www.summitdata.com/SCU.htm>.