



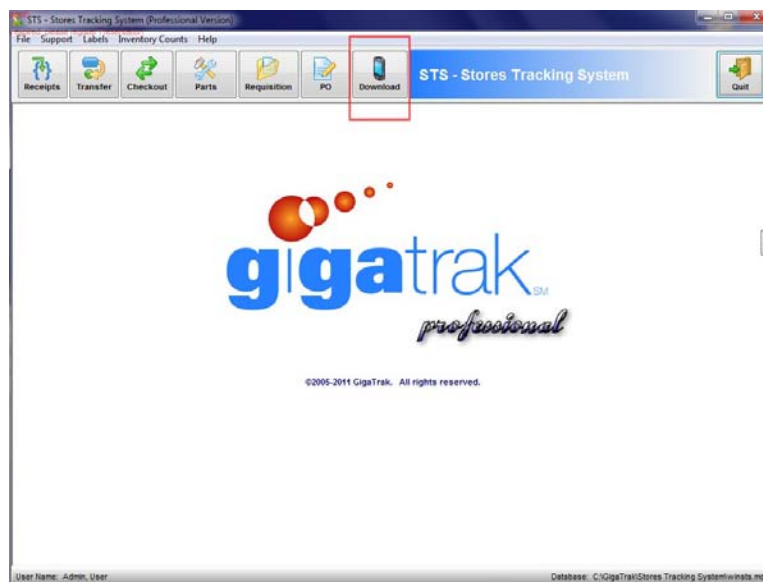
## STS Mobile Handheld Terminal DOWNLOAD:

While STS can use mobile handheld terminals in real time, wireless mode, there is also the option (at a bit less cost for hardware) to use mobile terminals in batch mode to administer tools.

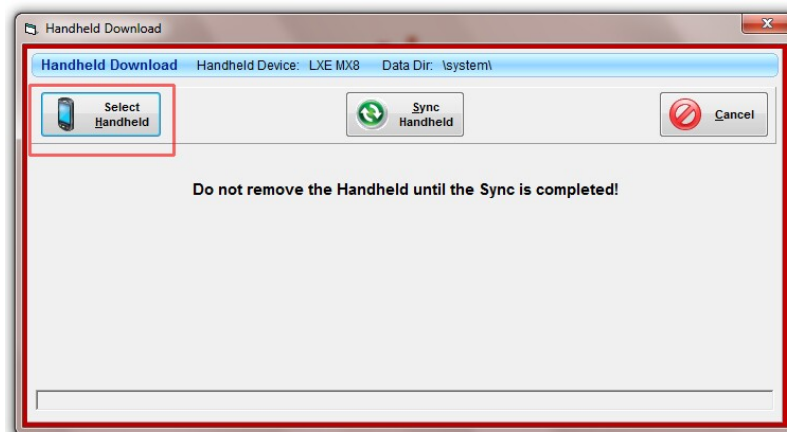
The DOWNLOAD function allows you to synchronize the data that was collected on the handheld, in batch mode, with the main application database.

To synchronize the PC database with the handheld, perform the following steps:

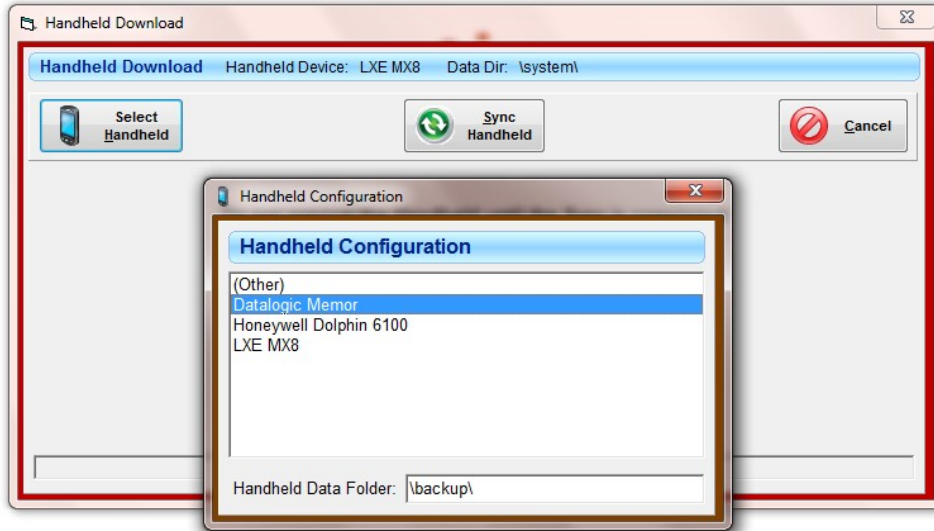
- 1) From the Main Icon Menu, Select the “Download Button”



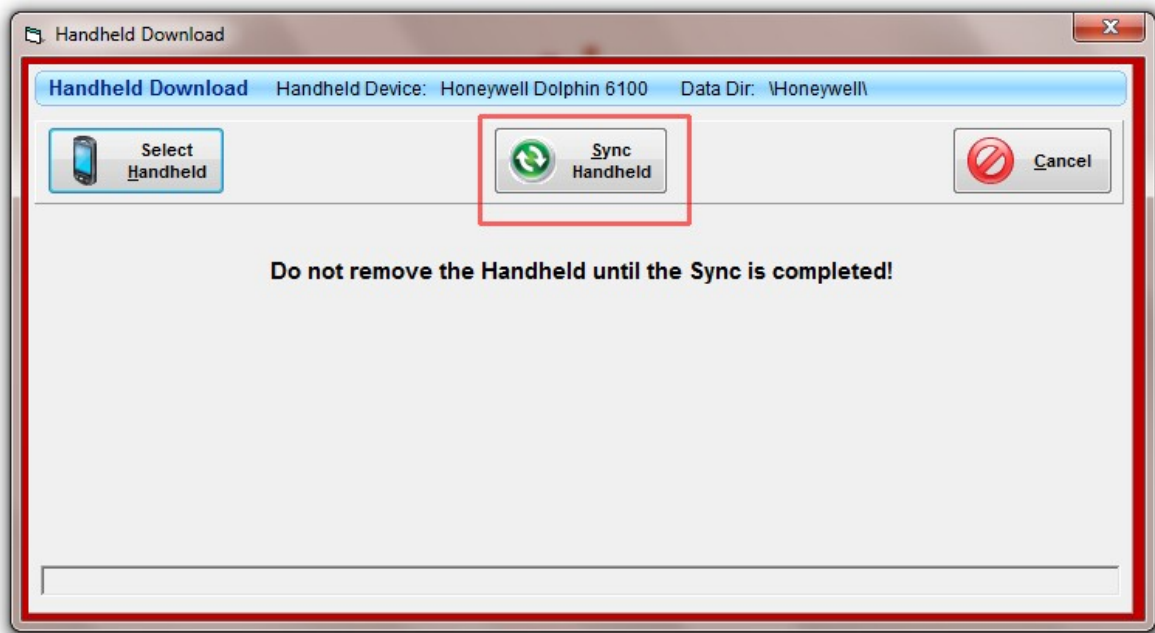
- 2) From the resulting screen, Select the “Select Handheld” button and verify the terminal that you are using is correct.



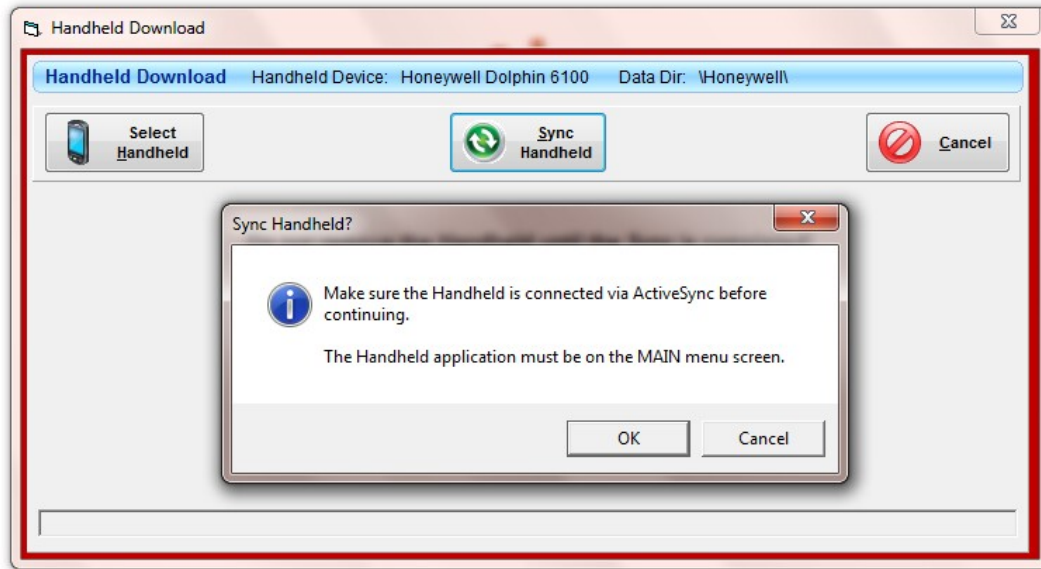
Choose from the following Handheld Terminal Options. Highlight the unit you have, then close the screen by selecting the red “x” box:



Select the Synch Handheld Button:



The following message appears:



If **Windows 7 OS** is installed on the PC workstation, **Windows Mobile Device Manager** is the Communication program that links the mobile handheld terminal to the workstation. Make sure **Windows Mobile Device Manager** is installed on the PC Workstation.

If **Windows Vista or XP** is installed on the PC workstation, **Windows Active Sync** is the Communication program that links the mobile handheld terminal to the workstation. Make sure **Windows Active Sync** is installed on the PC Workstation.

If **Windows 7 & Windows Mobile Device Manager** is used, the following screen will appear once the Handheld Terminal is connected (via cable direct from the Handheld Terminal to the USB Port on PC Workstation); **OR**, once the Handheld Terminal is “docked” in its docking station and the docking station is connected via cable direct to the USB Port on the PC Workstation.

Once the communication connection link is established (this should happen automatically) between the Handheld Terminal and the PC Workstation, the “**connected**” checkmark will appear. (If the connection doesn’t ‘automatically’ occur when the cable connections are made or the terminal is docked, disconnect, then reconnect the cables or re-dock the terminal to initiate the link.)



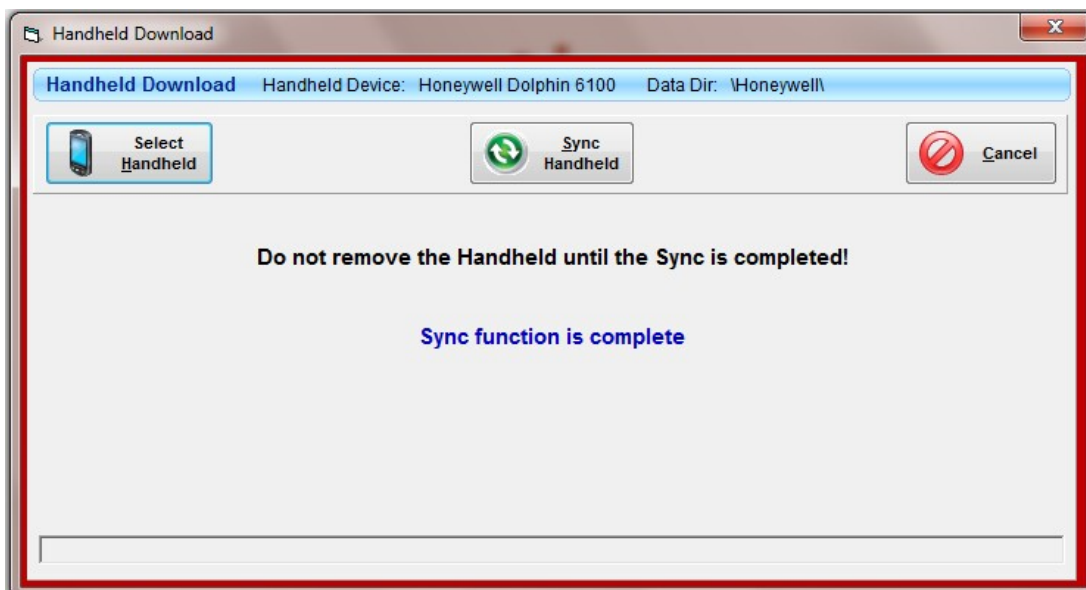
*[Note: If Windows Vista or XP & Microsoft ActiveSync are used, the screen will be similar (but not exactly the same as that displayed by Windows Mobile Device Manger). There will, however, still be a “connected” indicator.]*

**If Windows Mobile Device Manger, Select “Connect without setting up your device”, then, MINIMIZE (but, do NOT Close) the window.**

**If Microsoftw ActiveSynch, Select “Connect as Guest”, then, MINIMIZE (but, do NOT Close) the window.**



The following screen will appear, and the database on the PC will now automatically download and synchronize with the handheld terminal when the handheld is connected to the PC:





Each time afterwards, upon selecting the SYNCH DATA button on the DOWNLOAD screen, data collected on the handheld terminal or terminals will first be uploaded to the PC.

Data for handheld Receipts or Inventory Counts will be available via reports on the Inventory or Receipt Function Screens..

Once the Handheld terminal and PC are initially synchronized, it is advisable to CONNECT THE HANDHELD AND SYNCHRONIZE IT WITH THE PC DATABASE prior to using it for subsequent inventory counts in order to ensure to assure that the information on the handheld is current.



**To Re-Cap..... Basically: To synchronize the PC database with the handheld, perform the following steps:**

- 1) From the Main Icon Menu, Select the “Download Button”
- 2) From the resulting screen, Select the “Select Handheld” button and verify the terminal that you are using is correct.
- 3) Verify that the software application Microsoft ActiveSynch (for Pre- Vista or Windows 7 OS Systems), or Window Mobile Device Manager (for Vista or Windows7 OS systems) is installed on your PC. These applications are available from Microsoft, or may be located on your installation CD or Web download link.
- 4) CONNECT the handheld terminal directly a USB port the PC Workstation, using the download cable that shipped with the handheld. Or, Dock the handheld terminal in its cradle/dock that is in turn, connected via cable to a USB port on the PC Workstation.
- 5) If MS ActiveSynch or Windows Mobile Device do not automatically initiate, either disconnect/re-connect the cables, or re-seat the handheld terminal and verify that the handheld is connected to the PC.
- 6) Select the “Sync Handheld” button

The database on the PC will automatically download and synchronize with the handheld terminal the first time the handheld is connected to the PC.

Each time afterwards, upon selecting the SYNCH DATA button on the DOWNLOAD screen, data collected on the handheld terminal or terminals will first be uploaded to the PC.

Data for handheld Receipts or Inventory Counts will be available via reports on the Inventory or Receipt Function Screens..

Once the Handheld terminal and PC are initially synchronized, it is advisable to CONNECT THE HANDHELD AND SYNCHRONIZE IT WITH THE PC DATABASE prior to using it for subsequent inventory counts in order to ensure to assure that the information on the handheld is current.