



STS: Add a Profile

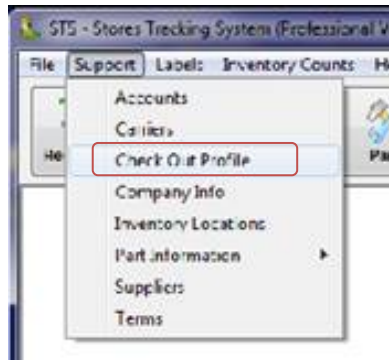
To *Add a Profile*, parts must first exist in the STS system database. Parts can be added to the system database either by Importing (File | Import Parts), or by Adding directly from the Parts Function.

Once Parts are in the database, Profiles can be created.

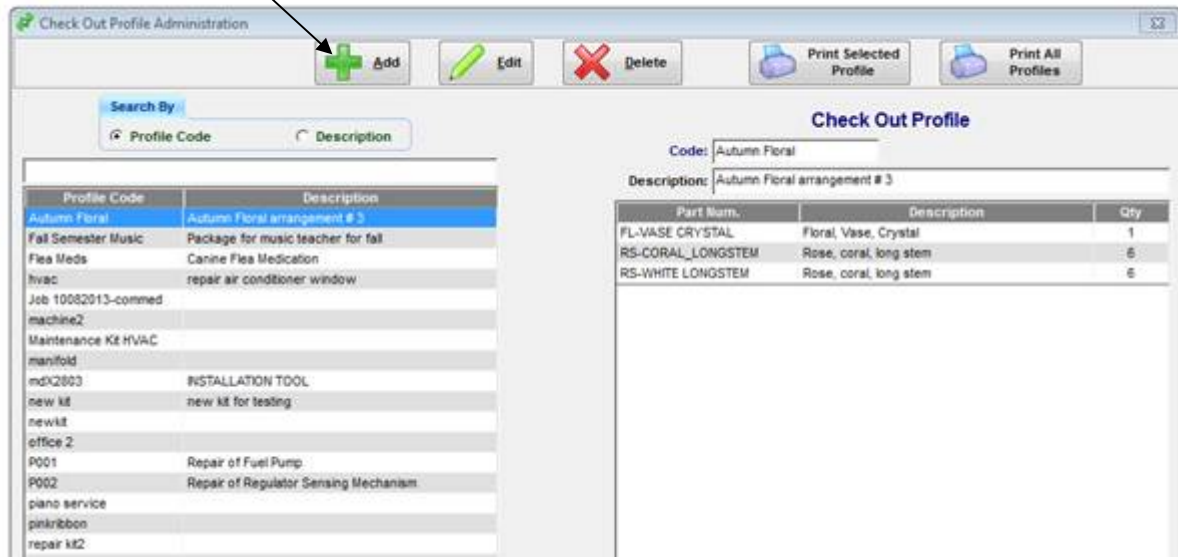
Once a **Profile** is created, it can be selected for *check out* from the **Scan Out** Tab that is located in the **Check Out** function.

To Add a Profile, Select the Support text tab:

- From the Support Text Tab, Select 'Check Out Profile':



- Select ADD

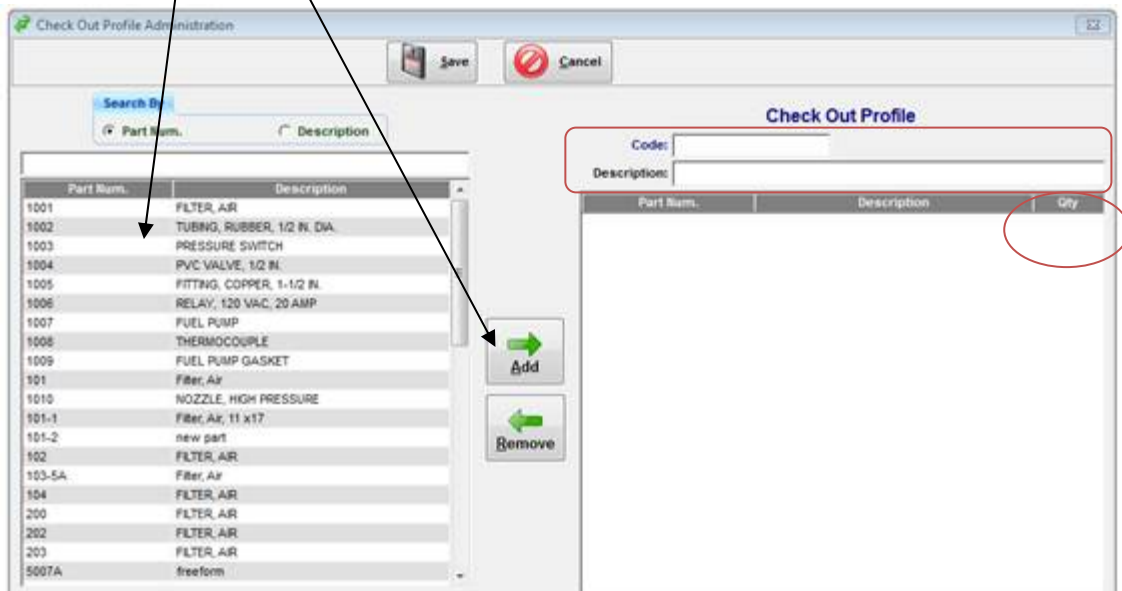


- Enter the **Profile Code** (ID, Name,...), and Description

- Highlight items on the left panel

- Select **Add** to build profile list:

- Adjust quantity as needed



- Select **Save** when list is complete