



Touchscreen Calibration

If the touchscreen is not responding properly to stylus touch taps, the touchscreen may need to be recalibrated.

- 1) Tap the Start button in the upper left corner of the system tray.
- 2) Select "Settings", then "System".
- 3) Tap the Screen icon
- 4) Tap the Align Screen button.
- 5) Follow the instructions on the screen.

Set Date/Time/Time Zone

- 1) Tap the Start button in the upper left corner of the system tray.
- 2) Select "Settings", then "System", then Clock and Alarms.
- 3) Home – Select Central Standard time to set time zone.
- 4) Set the current date, time.
- 5) OK or Exit from x at the top right of the screen to save and close the screen.

Set Backlight Power

- 6) Tap the Start button in the upper left corner of the system tray.
- 7) Select "Settings", then "System", then Backlight.
- 8) Battery Power – Turn off if not used for 3 minutes (user option).
Dim if not used for 15 sec (user option)
Turn on if button press or screen tap.
- 9) External Power - Turn off if not used for 10 minutes (user option).
No Dimming
Turn on if button press or screen tap.

Check Power Settings

- 1) Start | Settings | System
- 2) Tap the Power icon – power settings display

Wireless control (includes BT): Network/PC icon at lower right of screen

Enable - allows you to select what is turned on
Tools - for network settings
Status - status of connections

Reference the following, at the end of this document, for more detailed wireless configuration instructions: *Appendix 1 (Bluetooth)*

Appendix 2 (Wireless TC/IP network)

Appendix 3 (802.11 wireless configuration)

Appendix 4 (wireless utility tools)

Turn on ScanWedge

- 1) The ScanWedge Utility is active by default.

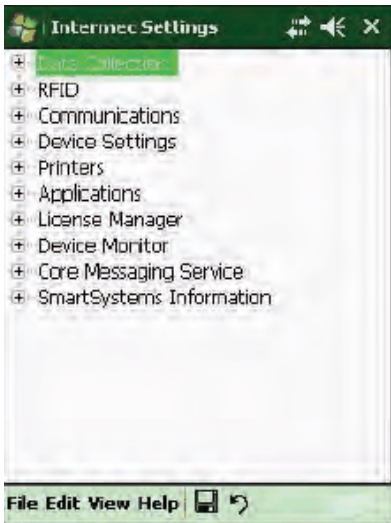
Configure CK32 Bluetooth (for HP 470 Portable Printer):

- 1) Start | Settings | Connections | Bluetooth | Mode
- 2) Check “turn Bluetooth on”
- 3) Select “devices” tab
- 4) Select “add new device”
- 5) Search should find the HP printer
- 6) Select “Office Jet HP470”
- 7) Select “next”
- 8) Use “0000” as the passcode
- 9) Select “next”
- 10) For services, check “serial” box
- 11) Message may say “device added”, Save
- 12) Select “com ports”
- 13) Select “new outgoing port”..... The printer you wish to connect to will display
- 14) Select ‘next”
- 15) Select “Com port 4”
- 16) **UNCHECK** secure communications
- 17) Save and exit

Append Carriage Return to Barcode scan

If the screen cursor does not advance to the next data field in your application after scanning a barcode, you need to append a carriage return to the barcode scan.

- 1) From the Homescreen, Start | Settings | System | Intermec Settings |



- 2) Select “Data Collection”
- 3) Select “Symbology Options”
- 4) Select “Post Amble”
- 5) Enter “\x0D” for a Carriage Return
- 6) Save your changes

Microsoft Active Sync Installation (For Windows XP)

- 1) Locate a copy of the latest version of Active Sync for your computer system. The correct version is available from Microsoft's WEB site or a copy is included on your CD. Version 4.5 is the latest from Microsoft as of this printing.
- 2) Look for the installation file (i.e. activesync_setup.msi) and run it. We recommend that you follow the installation instructions and accept the standard default settings during your install.
- 3) Leave Active Sync running to install and connect your handheld computer.

NOTE: Some users may use a single PC to connect multiple handheld computers. If this is the case, it is best to setup your PC to recognize each handheld as a "Guest". This avoids having Active Sync loading shared data from your Outlook and other PC applications. To set all connected handhelds as a Guest, please double-click and run the provided "GuestOnly.reg" file. It will instantly update your system for future connections.

Windows Mobile Device Center Installation (For Windows Vista or Windows 7)

- 1) Locate a copy of the latest version of Windows Mobile Device Center for your computer system. The correct version is available from Microsoft's WEB site or a copy is included on your CD.
- 2) Look for the installation file (i.e. drvupdate-x86.exe) and run it. We recommend that you follow the installation instructions and accept the standard default settings during your install.

Install GigaTrak Handheld Application

The handheld application files can be found in the PocketPC folder of your installation CD (or was provided to you via email).

- 1) Connect the handheld docking station to your computer (typically a USB connection) and plug in the AC power cable.
- 2) Put the handheld in the dock and wait for it to sync with the PC.
- 3) On the handheld, to locate the application file directory:
Start | Programs | File Explorer
Select "my device" drop down arrow
Select "flash file store" (This will be the storage area for the GT application)
- 4) On the PC, select the designated *.cab files : [sql.cab](#) and [uss_mobile.cab](#)
Copy these two cab files to the "flash file store" directory on the handheld.
Once the files are copied, disconnect the USB cable.
On the handheld, click on each file to run it – this will install the application on the handheld.
- 5) Exit out to the main homescreen screen on the handheld.
- 6) *Start | Programs | USS_Mobile* to run the application

Test Print from USS Mobile Application

- 1) Run USS Mobile application
- 2) Select "Admin" Button
- 3) Password is "admin"
- 4) Select "printer and printer options"
Printer: HP PCL
Port: COM4
Color/Mono: 4 color CMYK
- 5) Print test page

Re-Boot Terminal:

If the handheld does not respond properly, it may need a reboot. Perform a warm boot first and see if that fixes the problem. If it does not, then perform a cold boot.

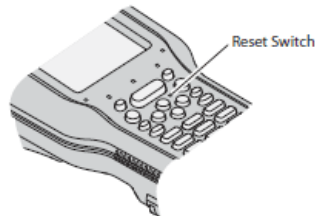
Warm Boot the Handheld (Preferred Reset Method)

Press and hold the **Power** button for about 10 seconds. The unit screen will blank and reset.

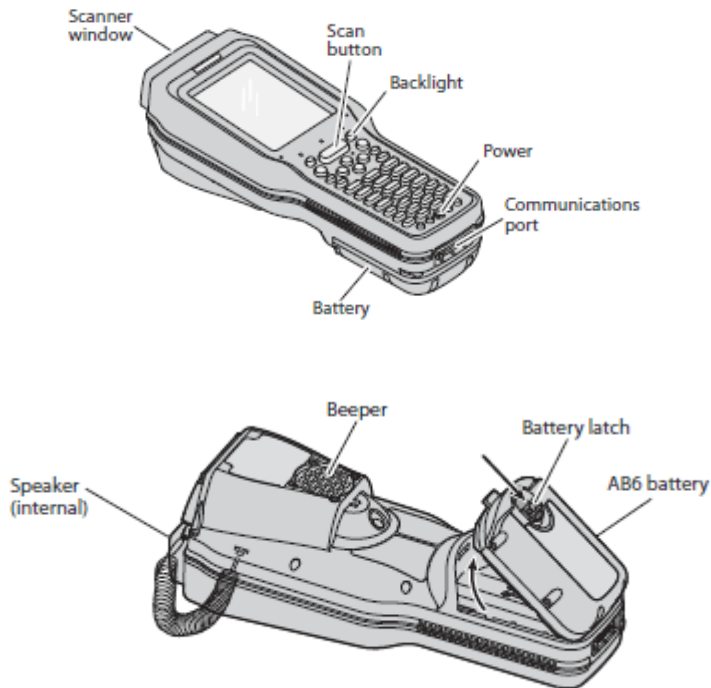
Cold Boot the Handheld (Secondary Reset Method)

Press the **Power** button to suspend the terminal.

With a bent paper clip, or similar device, press the recessed reset switch on the CK32 I-Safe keypad.



Set the date and time after each cold boot to ensure that the system clock is accurate.



Inserting the AB6 Battery

Additional Manuals online @ Intermec:

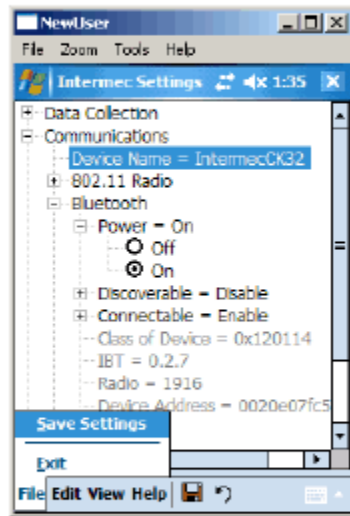
<http://www.intermec.com/support/manuals/search.aspx?categoryid=3&familyid=8&productnodeid=CMPTRCK32AS>

APPENDIX 1

Turn the Bluetooth Radio On:

To turn the Bluetooth radio on

- 1 Select Start > Settings > System > Intermec Settings > Bluetooth.



- 2 Tap the Power On radio button and tap File > Save Settings.

Once Bluetooth is enabled, it stays enabled through a warm or cold boot and maintains virtual COM ports (such as printing) registration.

Select the Current Wireless Printer:

- 1 First, verify the wireless printer is powered on.
- 2 Then, use one of the following 3 methods to connect to the wireless printer:
- 3 Note:

Selecting the Current Wireless Printer on the CK32 I-Safe

By default, there is no current wireless printer selected on the CK32 I-Safe.

There are three ways to select the current wireless printer:

- Discovering the printer using Bluetooth device discovery
- Manually entering the printer's Bluetooth device address
- Choosing the printer from a list of previously discovered printers

To discover the printer with Bluetooth device discovery

- 1 Select **Start > Settings > the Systems tab > Wireless Printing**. The Wireless Printing wizard appears.



- 2 Tap **Acquire Printer** to initiate printer discovery. All Bluetooth printers discovered within range appear in the devices list.
- 3 Select the printer you want to connect to and then tap **OK**.
If your preferred printer does not appear, make sure the printer is turned on and discovery is enabled, and then repeat Steps 1 through 3.
- 4 Tap **Test Print**. The printer prints out the test page.

To manually enter the device address of the printer

- 1 Select **Start > Settings > the System tab > Wireless Printing**. The Wireless Printing wizard appears.
- 2 Tap **Manual > Acquire Printer**. The wizard advances to the next screen where you enter the device address.




- 3 Type the address of the printer in the Enter Device Address text box and then tap **OK**. The keyword -unknown- appears in the Device Name field in the Current Wireless Printer box. The name of the printer is not sent to the CK32 I-Safe when you manually enter the printer address.
- 4 Tap **Test Print**. The printer prints out the test page.

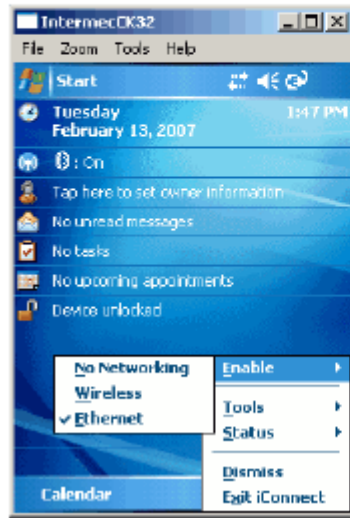
To choose the printer from a list of previously discovered printers

- 1 Make sure you have already performed a Bluetooth device discovery.
- 2 Select **Start** > **Settings** > the **System** tab > **Wireless Printing**. The Wireless Printing wizard appears.
- 3 Tap **Set Different Printer**. The **Devices** list appears with the list of previously discovered printers.
- 4 Select the printer you want and tap **OK**.
- 5 Tap **Test Print**. The printer prints out the test page.

APPENDIX 2

To use wireless communications in a TCP/IP network

- 1 Tap the iConnect icon () in the lower right corner of the Today screen. From the menu, select **Enable > Wireless**. This disables the Ethernet connection.



(The screen above shows Ethernet as checked, this will change when you select Wireless.)

- 2) You will be prompted to reboot the device so changes take affect.
Press and hold the **POWER** button for 10 seconds to initiate the reboot.
- 3). From the Homescreen, go to **Start > Settings > System > Intermec Settings > Communications > Ethernet Adapter > IP Settings**.
- 4). If you have a DHCP server, and are using DHCP, you may not need to set these Parameters. If using Static IP addresses, this information is required:
 - IP address
 - Subnet mask
 - default router

Your network may also require you set up:
 Primary and Secondary DNS servers
 Primary and Secondary WINS servers
- 5) From the Homescreen, go to **Start > Settings > System > Intermec Settings > Communications > 802.11 Radio**
- 6). Configure/verify these network parameters:
 - Wireless Network name (SSID)
 - IP Settings

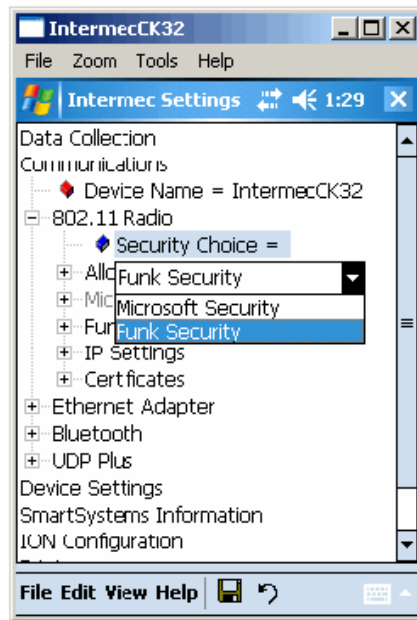
APPENDIX 3

Configure the Wireless network/security parameters using EITHER Intermec Settings OR the Profile Wizard/iConnect.

USING INTERMEC SETTINGS, follow these 3 steps:

1)- Select a Security Choice (option-Funk Security)

- 1) From the Homescreen, Select: **Start > Settings > System > Intermec Settings > Communications > 802.11 Radio > Security Choice**



- 2) Select **Funk Security** from the drop-down.
- 3) If an alert box appears, indicating a warm boot is needed, Tap **Yes** to warm boot the unit.

2- Select a Profile for Security.

- 1) From the Homescreen, Select: **Start > Settings > System > Intermec Settings > Communications > 802.11 Radio > Funk Security**

- 2) Select **Active Profile**, choose a profile from the list and save your settings.
- 3) Tap on the active profile to expand it.
- 4) Give the profile a meaningful name:

Select the Profile Label and a text box appears
Select the text in the box, type in a name, save your settings

- 5) Select one profile as the active profile by tapping **Active Profile** and choosing the profile from the drop-down list.
- 6) Save your settings. Exit to the Homescreen.

3- Configure Security (WPA or WPA2 in this example).

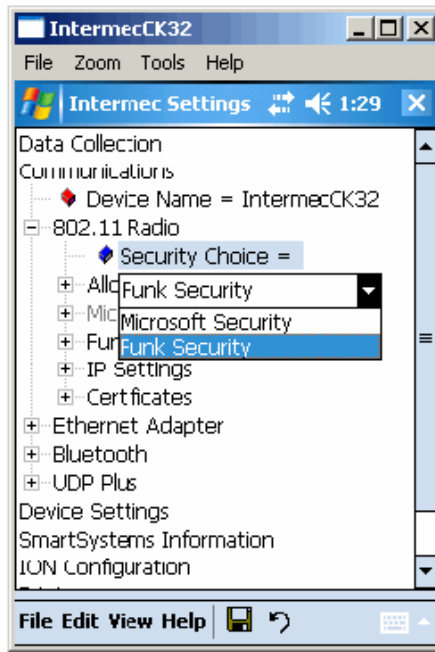
- 1) From the Homescreen, Select: **Start > Settings > System > Intermec Settings > Communications > 802.11 Radio > Funk Security > Profile**
- 2) For **Association**, choose **WPA** or **WPA2**, press **Enter**
Encryption automatically defaults to TKIP if using WPA.
WPA2 uses AES.
- 3) For **8021x**, choose **None**.
- 4) For Pre-Shared Key, *enter the pre-shared key or passphrase.*
Pre-shared key may be given in hexadecimal by *prefixing a string of 64 Hex digits with 0x* for a total of 66 characters, **or** by entering a passphrase of (of your choosing) that is 8 to 63 characters.
- 5) Save your settings.

(The CK32 is capable of supporting other wireless security options. If your network uses other security, reference the CK32 Users Manual. The manual is available, online, from www.intermec.com and located under "Support" > "Manuals"

USING the PROFILE WIZZARD or iCONNECT, follow these 3 Steps:

1. Set the Security (Funk) Option via Intermec Settings.

From the Homescreen, Select: **Start > Settings > System > Intermec Settings > Communications > 802.11 Radio > Security Choice**



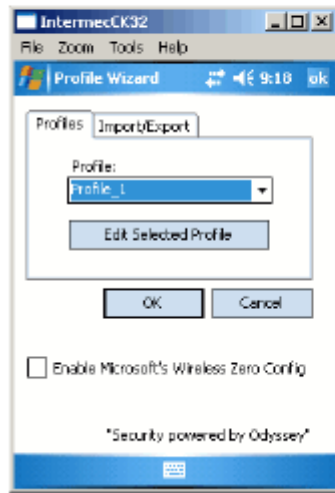
Select **Funk Security** from the drop-down.

An alert box may appear telling you that you must save the settings and warm boot the terminal for the new security choice to take effect. Tap **Yes** to warm boot the unit.

2 - Select a Profile for Security via Profile Wizard

Tap the iConnect icon () icon in the lower right corner of the screen and select **Tools > Wireless Settings**.

The Profile Wizard appears on the screen.



From the **Profile** list, select the profile you want to

Tap **Edit Selected Profile**.

Optional, give the profile a meaningful name by selecting text in Profile Label text box and typing in a meaningful name.

From the **Network type** list, select either **Infrastructure** or **Ad Hoc**. Select infrastructure if the network uses access points, or Ad Hoc to set up a private network with one or more other computers.

Enter the **SSID (wireless network name)** if different than the profile name.

Tap **OK**.

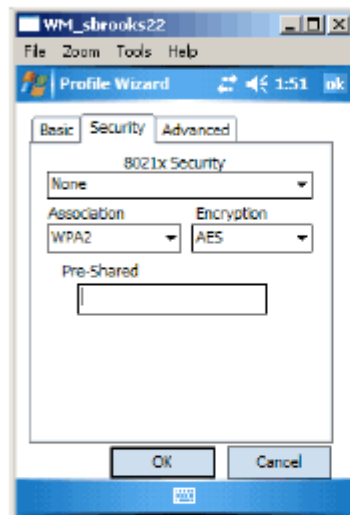
3 - Select WPA or WPA2 Security via Profile Wizard:

Configuring WPA-PSK Security With Profile Wizard

- 1 In the Profile Wizard, select the Security page.
- 2 For 8021x Security, choose None.
- 3 For Association, choose WPA.
- 4 For Pre-Shared Key field, enter the passphrase as ASCII. The passphrase must be 8 to 63 characters and match the passphrase on the access point.
- 5 Tap OK.

Configuring WPA2-PSK Security With Profile Wizard

- 1 In the Profile Wizard, select the Security page.




- 2 For 8021x Security, choose None.
- 3 For Association, choose WPA2.
- 4 For Pre-Shared Key field, enter the passphrase as ASCII. The passphrase must be 8 to 63 characters and match the passphrase on the access point.
- 5 Tap OK.

(The CK32 is capable of supporting other wireless security options. If your network uses other security, reference the CK32 Users Manual. The manual is available, online, from www.intermec.com and located under "Support" > "Manuals")

APPENDIX 4

Using iConnect, you can check the wireless connection status:


To check the status of your wireless connection

- 1 Tap the iConnect icon () in the lower right corner of the Today screen.
- 2 From the menu, select **Status > Wireless**. The Wireless Status screen appears and checks the connection.

You can also use iConnect to change any network settings by tapping **Tools > Wireless Settings** from the iConnect menu.

Using iSpyWiFi you can also view available networks and network settings:

To start iSpyWiFi from iConnect

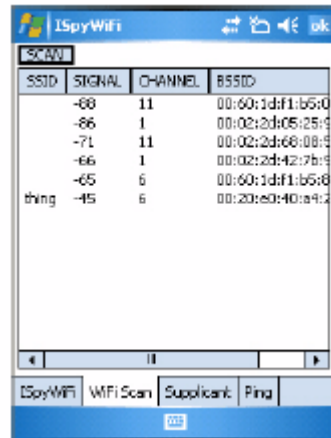
- 1 Tap the iConnect icon () in the lower right corner of the Today screen.
- 2 From the menu, select **Status > Wireless > Advanced**. The iSpyWiFi screen appears.

iSpyWiFi



- 3 Use the WiFi Scan tab to scan for networks and bring back information about any access points with which you can communicate.

Tap **Scan** and wait for the table to fill with information.



You can also select **Supplicant** from this panel to make wireless network changes.