

Install the GigaTrak Client on the Handheld Terminal:

A mobile, handheld data “terminal” runs like a mini PC with an abbreviated version of Windows OS (CE). GigaTrak products have client applications that can run on these terminals and supplement the GigaTrak main PC application functionality.

The mobile client software is included with the main application software license download, if you purchase the handheld terminals (or if you have existing terminals you wish to use). You will need to install this client software on the handheld terminal.

The file for this will be in the download file group for the original software application. It should be under a directory called “Handheld”; the file will be “setup*_hh.exe” (what * is will depend upon the terminal model you have).

IF you have already established the communication connection between the handheld terminal and the PC application, using either Microsoft Activesynch or Microsoft Windows Mobile Device Manager (WMDC), perform the following steps to synchronize the handheld terminal with the TTS application.

*(If **NOT, before proceeding, first** establish this communication link by referencing the directions in **Appendix A** at the end of this document.) :*

- Connect the USB cable - that came with the handheld terminal - between a USB port on the PC and handheld (either directly to the handheld terminal or to the cradle).
- The PC will first ‘recognize’ the handheld terminal, then may install driver for it.
- Windows Mobile Device Center (WMDC) or Microsoft ActiveSynch should automatically initiate, on both the Handheld Terminal and the PC, once the handheld terminal is connected to the PC.

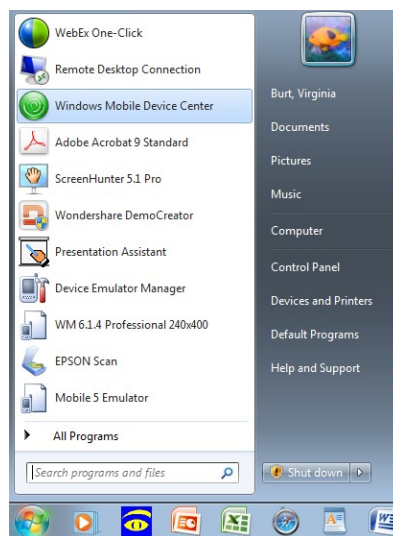
On the Handheld:



On the PC:



- *If Windows Mobile Device Center (WMDC) OR Microsoft ActiveSync does not automatically initiate once the handheld terminal is connected to your PC, you may need to initiate the application manually from the PC:*

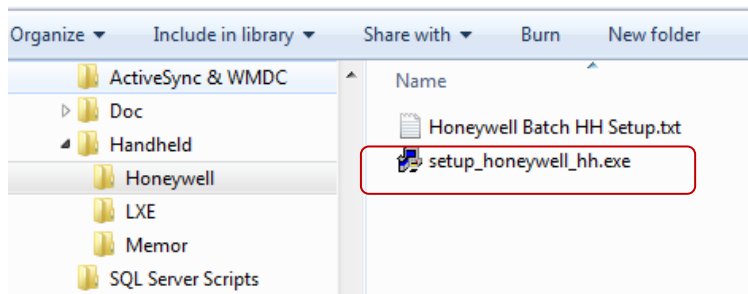


- . *(Reference Appendix A, at the end of this document, for additional detail on WMDC or ActiveSync.)*

- When WMDC has connected with the handheld terminal, it will indicate “connected” on the WMDC screen. You will see a similar “connected” indicator if using ActiveSynch.

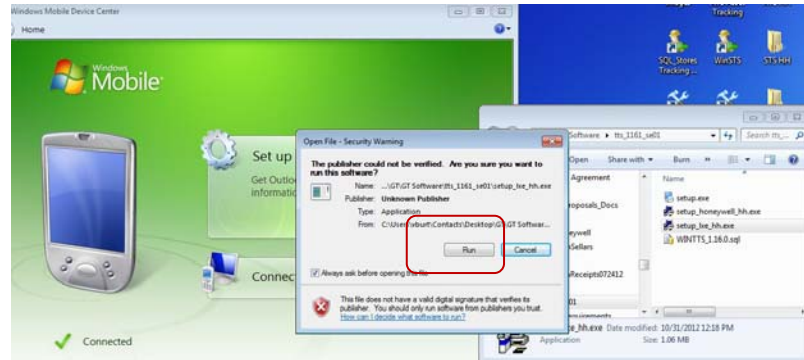


- For WMDC, Select “Connect without Setting up your Device”
For ActiveSynch, Select “Connect as Guest”
- Now, **minimize** the communication screen (WMDC or Activesynch) screen (**do not shut it down**, just minimize it). It must continue to run in the background in order to maintain the communication connection to the handheld terminal).
- **From the PC screen**, go to the file directory that contains the mobile handheld GT client. From the initial zip file that was downloaded with your software license email from GigaTrak, this file should be located in a directory named “Handheld”.

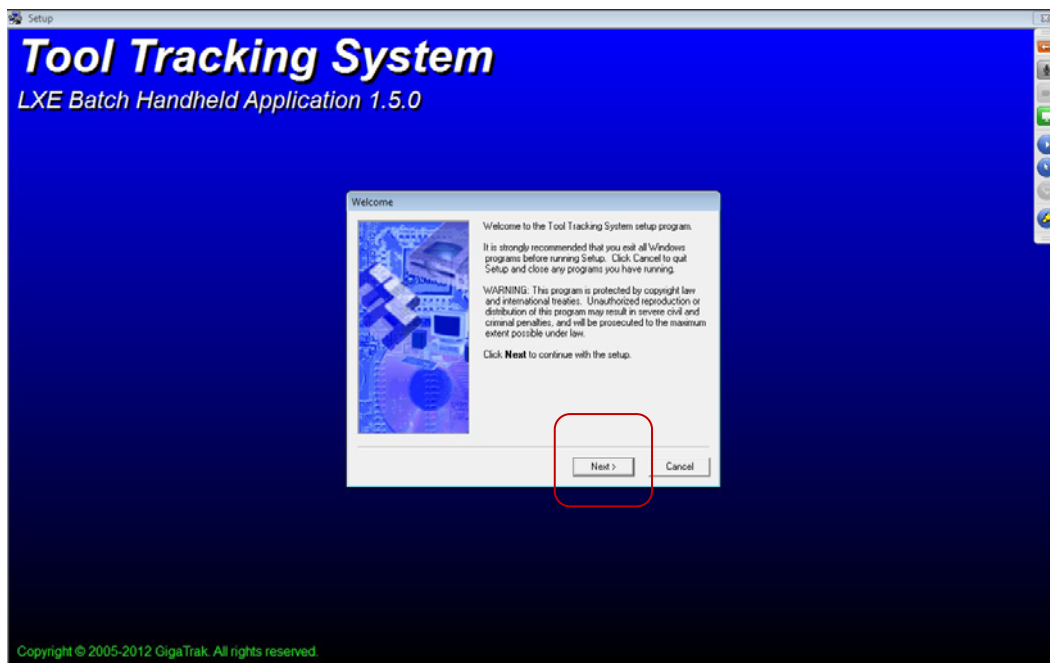


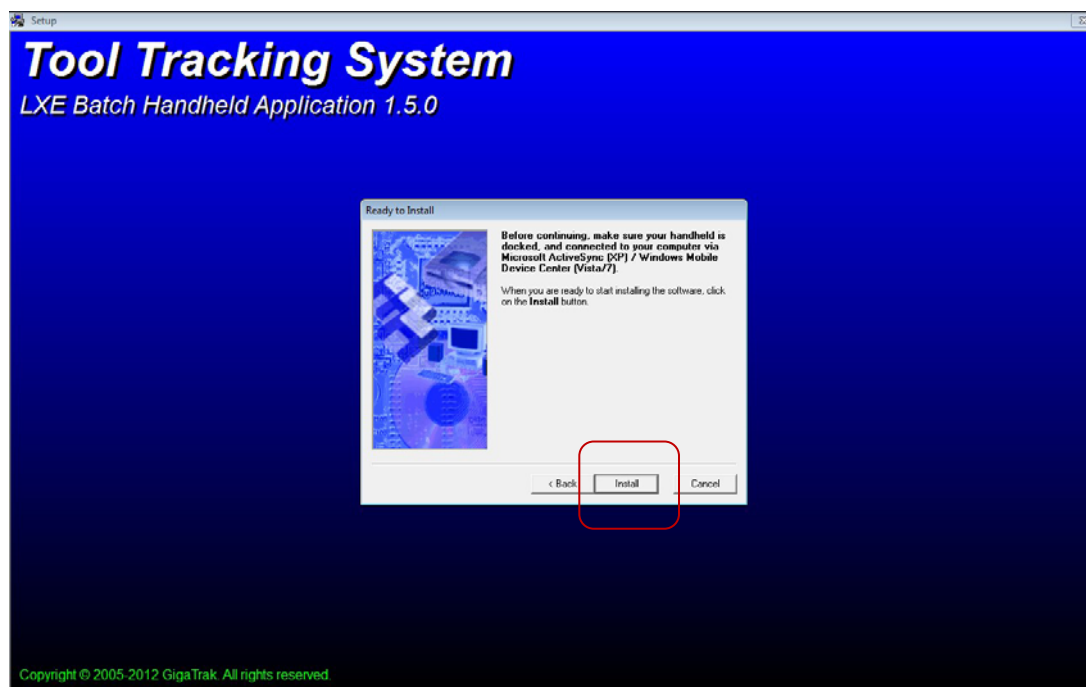
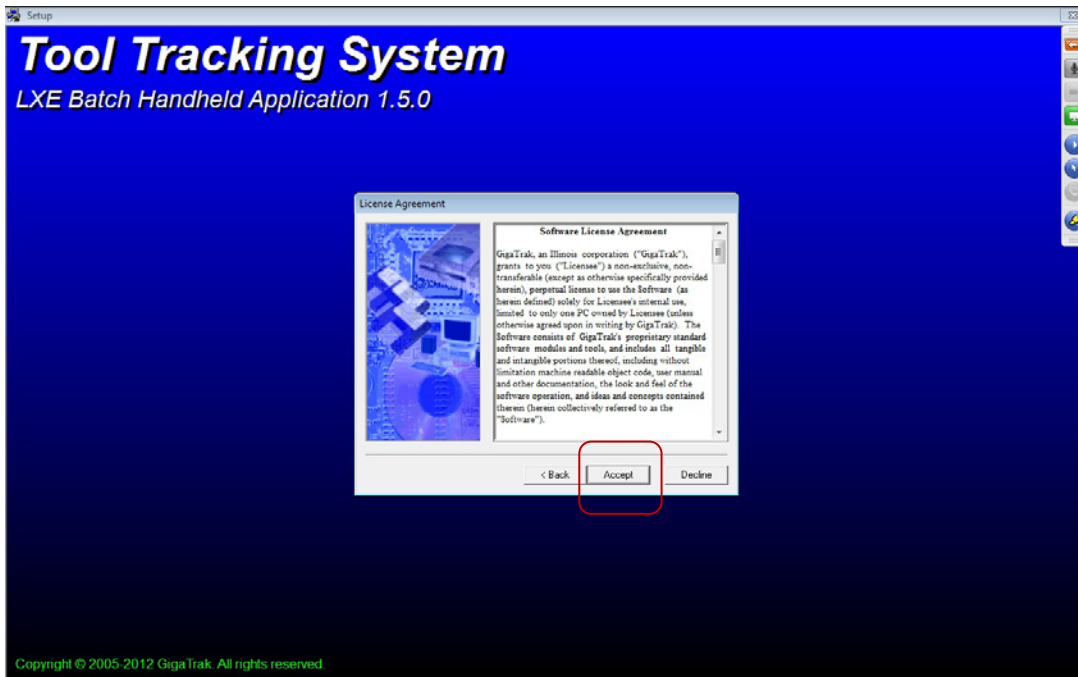
The file will be called “setup_*_hh.exe” (where * is the manufacturer brand of terminal you have). There is an instructive *.txt file also included in this directory.

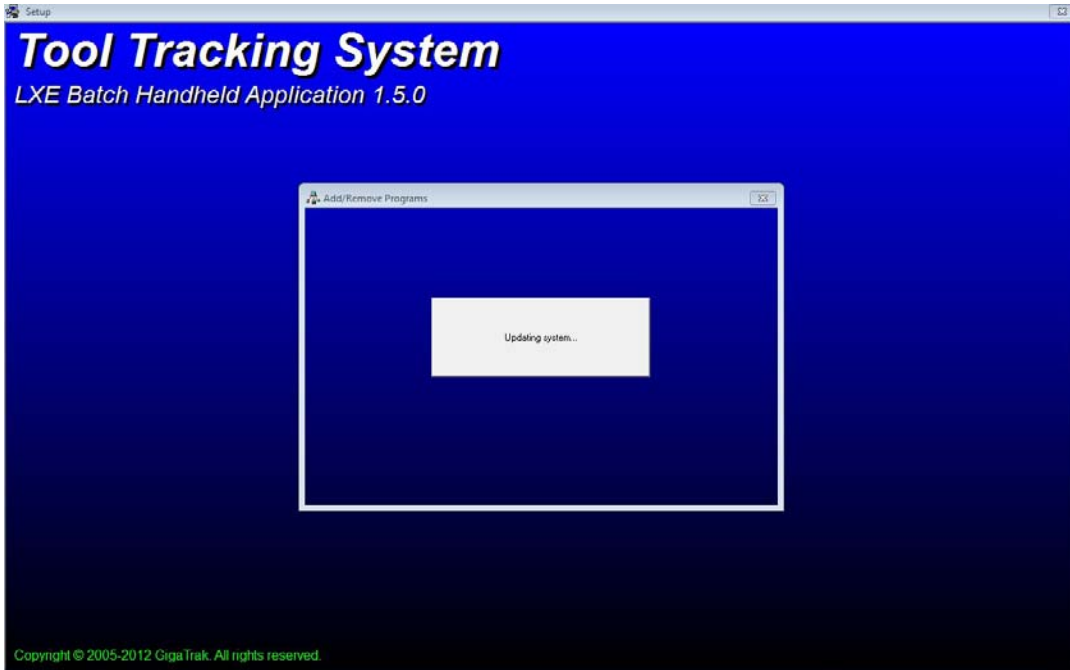
Select the setup_*_hh.exe file by double clicking on it. At the next screen, Select RUN:



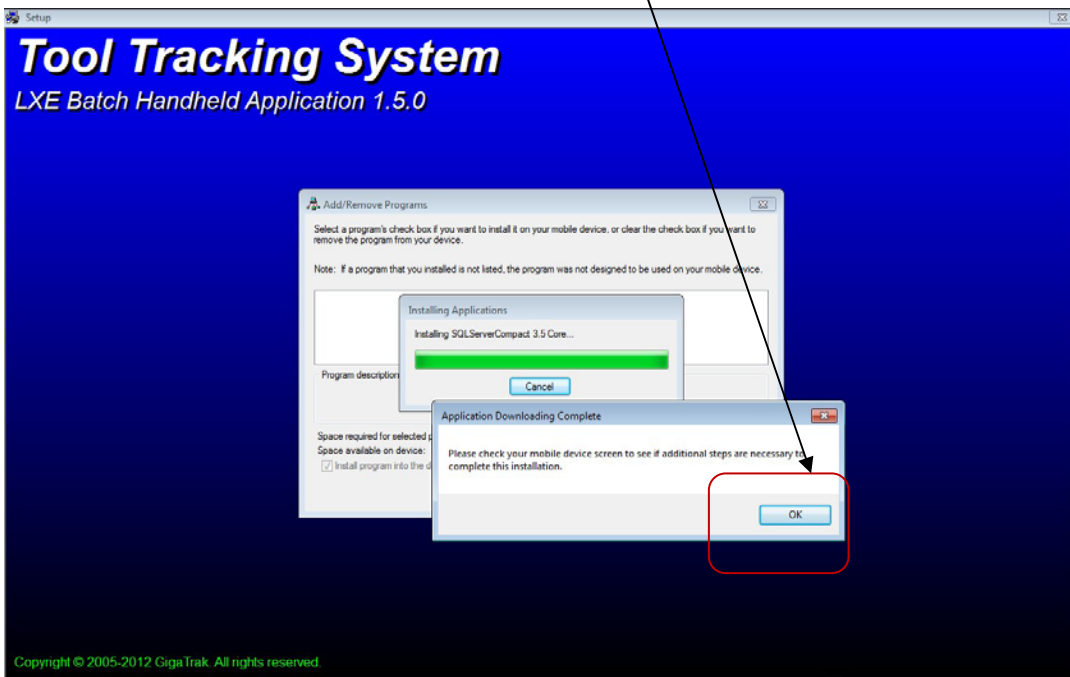
The GigaTrak client will install to the handheld terminal automatically. Simply Select the default screen prompts:



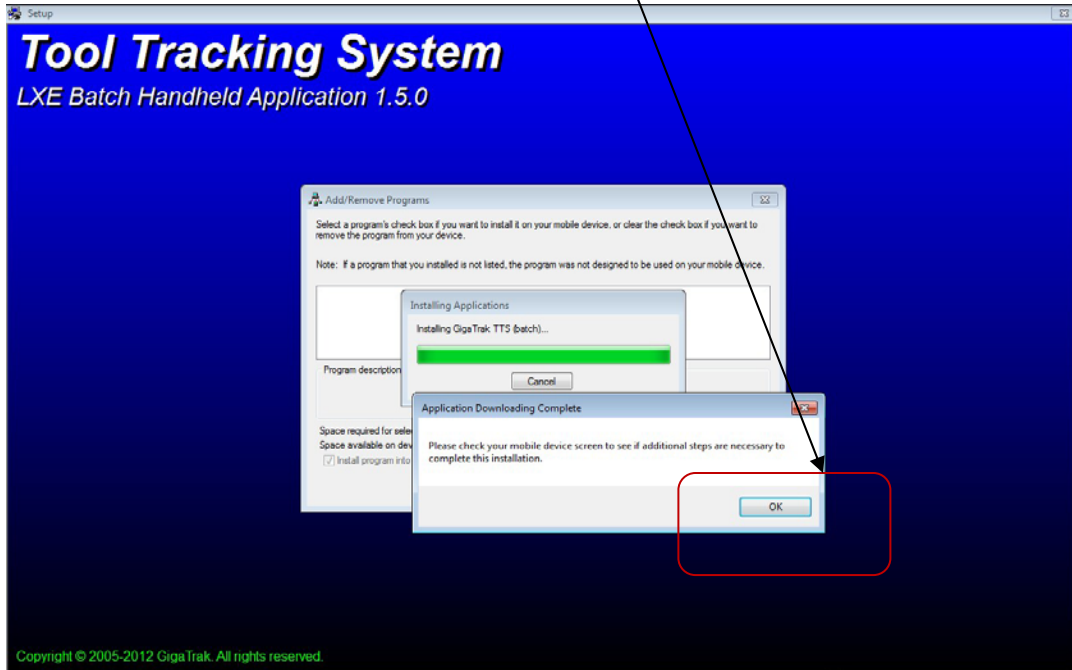




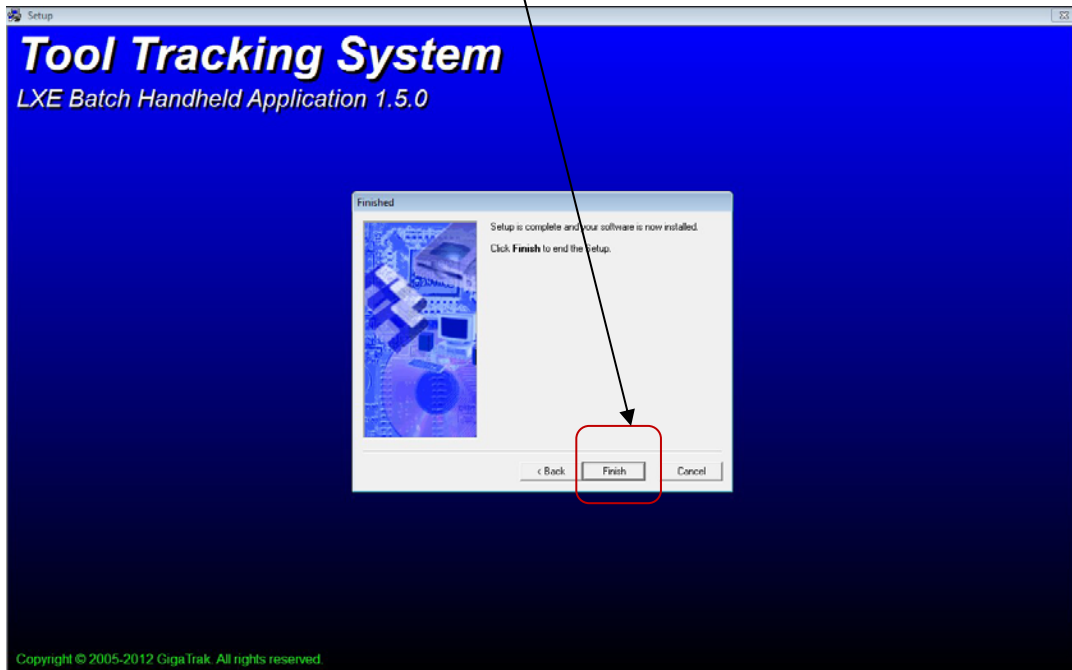
The installation installs SQL database files



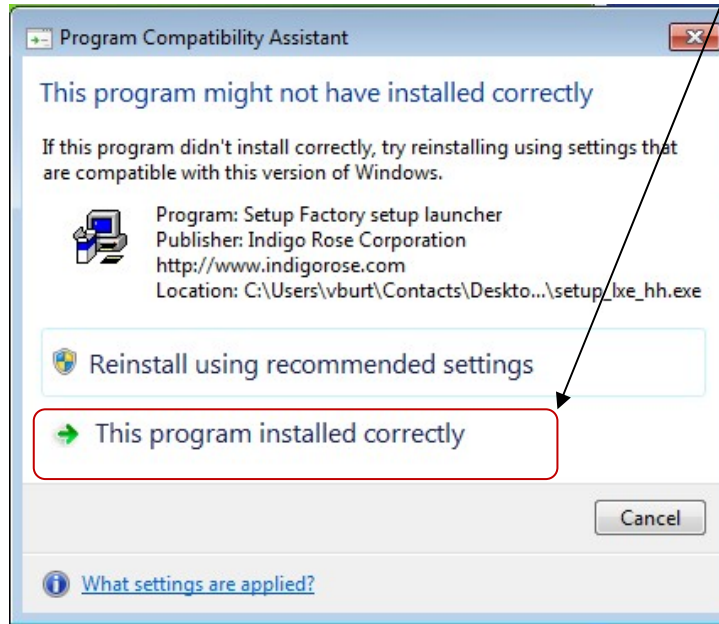
As well as the GigaTrak handheld application.....



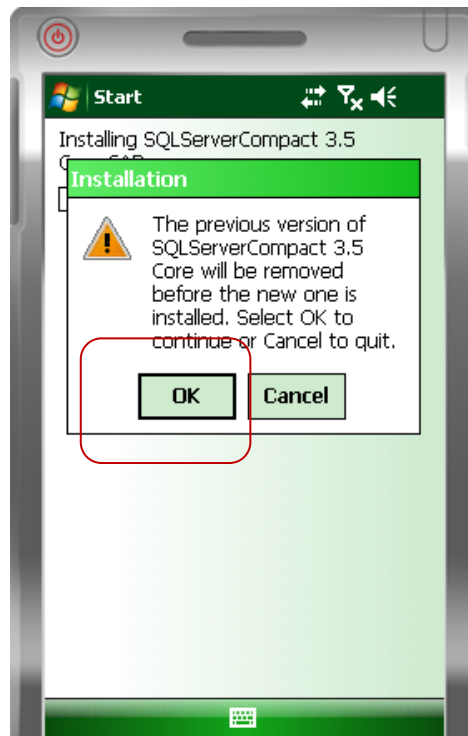
When all files are installed, Select Finish:



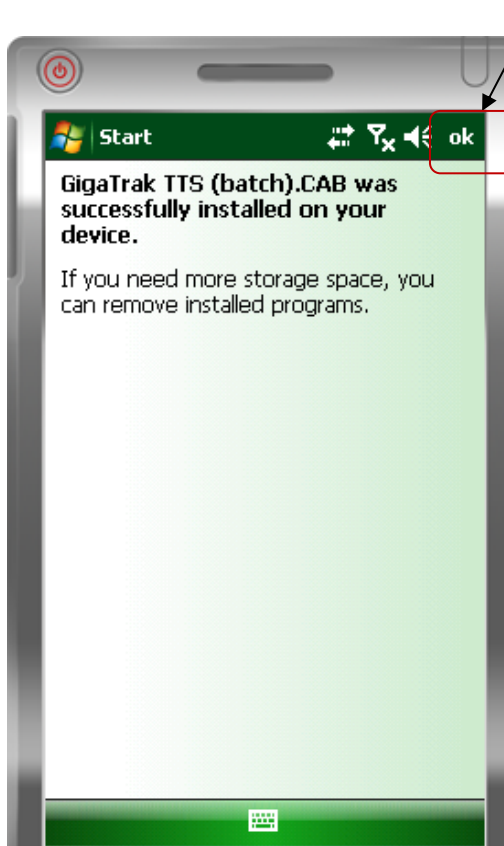
If the following screen appears, select “This Program Installed correctly:



Once, complete, there may be prompts also on the handheld terminal screen. Select the defaults.

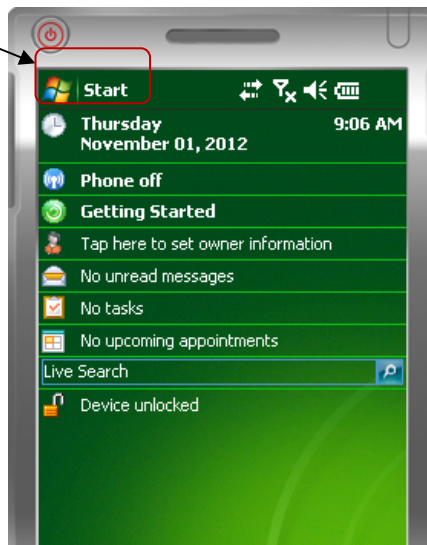


The handheld terminal will then go through a series of additional installation (greenbar) Steps. When complete, the resulting screen may appear. Select OK to exit.

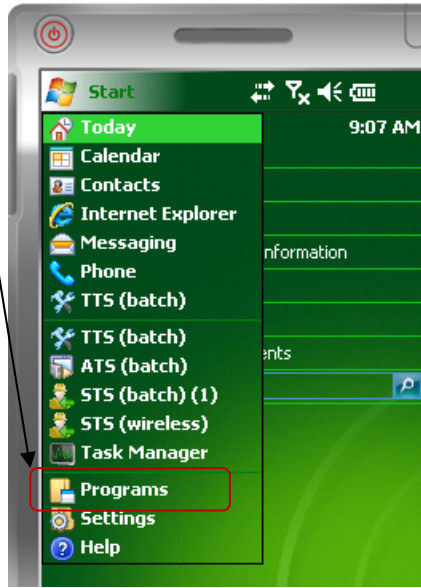


The resulting installation will be a GigaTrak program icon under the "Programs" section of the Handheld terminal screen, either Batch or Wireless versions:

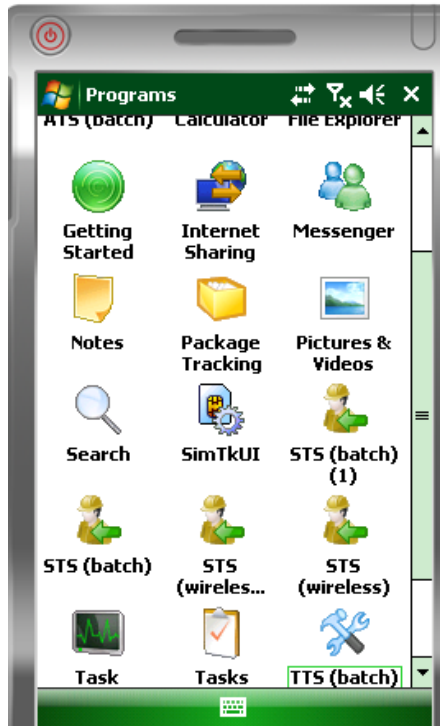
Select Start



Select Programs



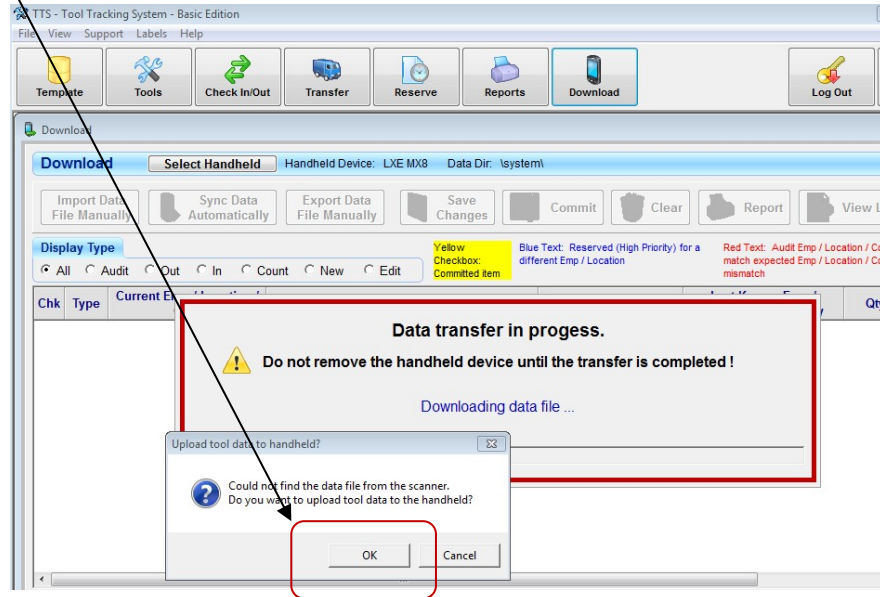
To initiate the GigaTrak app on the handheld, Select the application Icon, based on the product purchased:



BEFORE you can begin use the handheld terminal for data collection, tools, inventory or assets must be setup in the PC application database. Once there is data to “synchronize” with the handheld terminal initially, the synchronization process can be initiated from the Download Icon on the PC application screen.

The first time the data synch/download is attempted, the following screen will appear. It is normal, as there is no data initially, on the handheld.

Select OK, to initialize the terminal:



APPENDIX A

Establishing the communication connection between the handheld terminal and the TTS application

Either Microsoft Activesynch or Windows Mobile Device Manager MUST be installed on your PC workstation in order to establish the communication link between the PC workstation and the handheld terminal.

- *If **Windows 7 OS** is installed on the PC workstation, **Windows Mobile Device Manager** is the Communication program that links the mobile handheld terminal to the workstation. Make sure **Windows Mobile Device Manager** is installed on the PC Workstation.*
- *If **Windows Vista or XP** is installed on the PC workstation, **Windows Active Synch** is the Communication program that links the mobile handheld terminal to the workstation. Make sure **Windows Active Synch** is installed on the PC Workstation.*

*BOTH Microsoft Activesynch and Windows Mobile Device Manager programs are included with the GigaTrak application download folder that was sent to you via the file download *zip application when you purchased the GigaTrak application.*

.....

The first time the handheld terminal is connected to the PC workstation, an initial message may appear on the lower Windows menu bar indicating a new USB device has been found and drivers are being installed. Once this is complete, the Microsoft communications program should initiate.

.....

If **Windows 7 & Windows Mobile Device Manager** is used, the following screen will appear once the Handheld Terminal is connected (via cable direct from the Handheld Terminal to the USB Port on PC Workstation); **OR**, once the Handheld Terminal is “docked” in its docking station and the docking station is connected via cable direct to the USB Port on the PC Workstation.

Once the communication connection link is established (this should happen automatically) between the Handheld Terminal and the PC Workstation, the “**connected**” checkmark will appear. (If the connection doesn’t ‘automatically’ occur when the cable connections are made or the terminal is docked, disconnect, then reconnect the cables or re-dock the terminal to initiate the link.)



*[Note: If **Windows Vista or XP & Microsoft ActiveSync** are used, the screen will be similar (but not exactly the same as that displayed by Windows Mobile Device Manger). There will, however, still be a “connected” indicator.]*

- **If Windows Mobile Device Manger, Select “Connect without setting up your device”, then, MINIMIZE (but, do NOT Close) the window.**
- **If Microsoftw ActiveSynch, Select “Connect as Guest”, then, MINIMIZE (but, do NOT Close) the window.**

