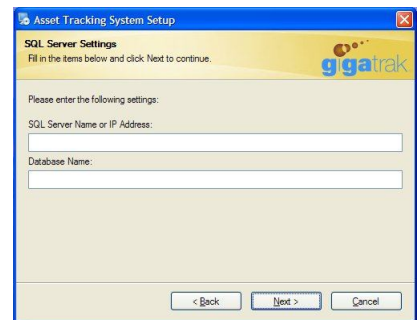
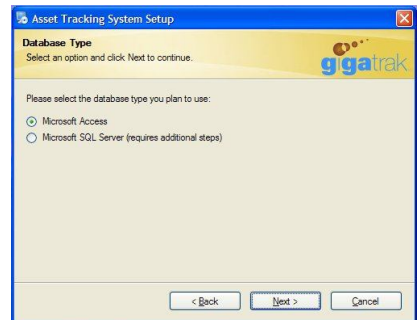
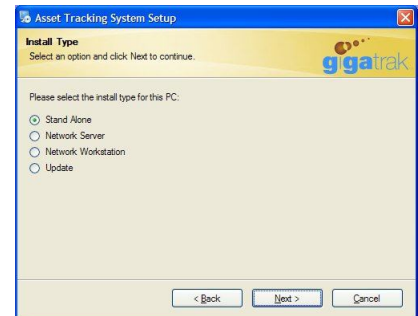


To install ATS:

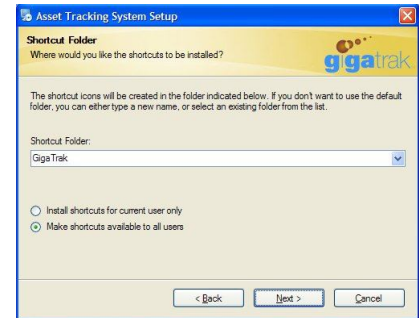
- You should have administrator rights on the local computer to install the software.
- If you are using SQL Server Express Edition, see Appendix A and B.
- If you are using Microsoft SQL Server, see Appendix B.
- If you are installing on a terminal server, or taking a snapshot for rollout, choose Stand Alone installation.

Stand Alone Installation

- Run setup.exe. If you are installing the software on a local PC (typical of single user systems), select Stand Alone when prompted for the Install Type.
- Select the type of database you want to use. (The Microsoft SQL Server option requires manual steps to install and configure the database. Please Cancel the setup, perform the steps in Appendix A and/or B, and then re-run this Setup.)
- If you selected Microsoft SQL Server, enter the server settings. When entering the SQL Server Name or IP Address, if you are using a named instance, add it with a backslash (example: myserver2\SQLEXPRESS).
- Select the Installation Folder for the application. The default folder is C:\GigaTrak\Asset Tracking System.

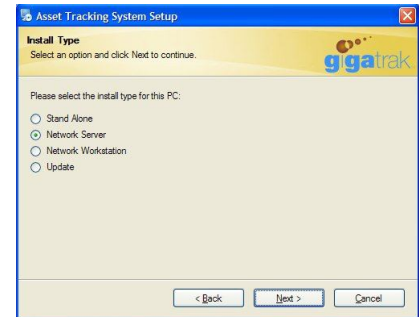


- ❑ Select the Shortcut Folder. The default is GigaTrak. Select the Next button and complete the installation.



Network Server Installation

- ❑ Run setup.exe on the server. Select Network Server when prompted for the Install Type. This will copy the application files to a shared folder on your server.



- ❑ Select the type of database you want to use. (The Microsoft SQL Server option requires manual steps to install and configure the database. Please Cancel the setup, perform the steps in Appendix A and/or B, and then re-run this Setup.)



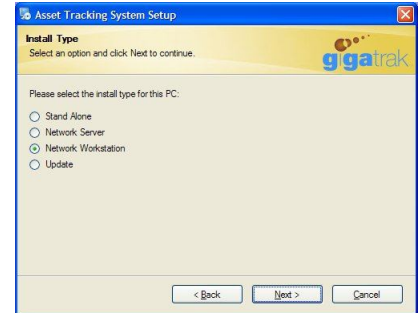
- ❑ Select the Installation Folder for the application. The default folder is C:\GigaTrak\Asset Tracking System. For a network installation, select a shared folder on your server. Select the Next button and complete the installation. After completing the server installation, proceed to the Network Workstation Installation section.



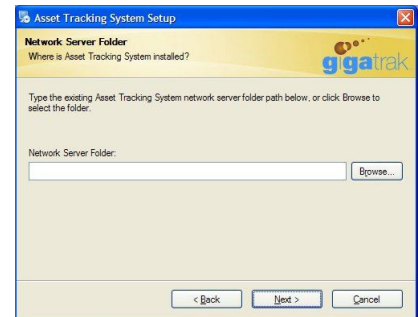
Network Workstation Installation

After installing the software on the server in the previous section, the application will have to be setup on individual workstations.

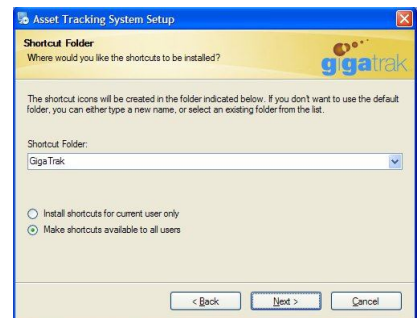
- From the workstation, navigate to the shared folder containing the application files on the server. Run setup.exe. Select Network Workstation when prompted for the Install Type.



- Select the Network Server Folder. This is the same folder that contains the application files above.

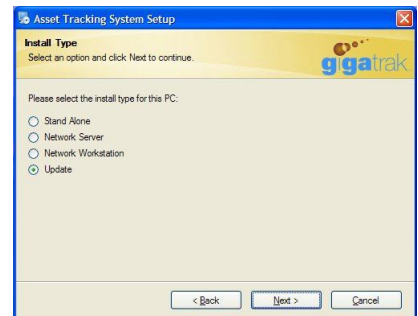


- Select the Shortcut Folder. The default is GigaTrak. Select the Next button and complete the installation.



Update an existing installation from version 4.10.0 or higher

If the current version of ATS is 4.10.0 or higher, select Update on the Install Type screen. Click the Next button to complete the installation.



Update an existing installation older than version 4.10.0

If the current version of ATS is older than 4.10.0, do not select Update on the Install Type screen. Select one of the other options and install to the same folder that contains the current WinATS.exe file.

After Installing

- Start the application by double-clicking on the desktop Asset Tracking System icon.

Access installation

The initial installation uses a demo database for you to train and learn with. We do NOT recommend using this database when you are ready to start entering real data.

If you want to use the demo data, click the Register button. The Log In screen will default to the Demo User. Click the Log In button to proceed. When you are ready to start entering real data, go to the File menu and select Registration Form. Enter the **Customer Ident** code and **License Key** provided by GigaTrak, and click the Register button. You will be prompted to use a clean database. Respond "Yes" to the prompt.

If you do not want to use the demo database, enter the **Customer Ident** code and **License Key** provided by GigaTrak, and click the Register button. You will be prompted to use a clean database. Respond "Yes" to the prompt.

SQL Server installation

No demo data is provided with the SQL Server database. If the Registration screen does not appear, go to the File menu and select Registration Form. On the Registration screen, enter the **Customer Ident** code and the **License Key** provided by GigaTrak, and click the Register button.

- Administrator Log In**
Some functions, such as access to the Setup Options and Check for Update function, are restricted to the administrator log in (user name - **admin**, password - **adminuser**).
- Add yourself as an employee. On the File menu, select Employee Administration. Select the Add button. Enter your First Name, Last Name, and a Barcode. Also enter the Log in Name and Password you will use to log in to the ATS application. In the Access Levels section, select Edit for all items. This will give you edit rights to all functions in the application. Select the Save button when you are finished.
- Proceed to the "GigaTrak ATS Quick Start" guide.
- NOTE: Please assign barcodes to any imported data as soon as possible.
- If any hardware (handheld computer, printer, etc.) was ordered, review the supplemental hardware documentation.

Appendix A *SQL Server Express Edition*

This document provides installation and configuration notes on installing a new instance of SQL Server 2008 R2 Express for use with GigaTrak software.

Install SQL Server 2008 R2 Express:

- If not already installed, download and install the appropriate version of Microsoft Windows Installer 4.5 for your operating system from the following link:
<http://www.microsoft.com/download/en/details.aspx?id=8483>
- If not already installed, download and install Microsoft .NET Framework 3.5 SP1 from the following link: <http://www.microsoft.com/download/en/details.aspx?id=22>
- If not already installed, download and install the appropriate version of Windows PowerShell 2.0 (part of the Windows Management Framework) for your operating system from the following link:
<http://support.microsoft.com/kb/968929>
- Download the appropriate version of SQL Server 2008 R2 Express with tools for your operating system from the following link: <http://www.microsoft.com/betaexperience/pd/SQLEXP08V2/enus/>
- Launch the installer and wait for the files to unpack and the prerequisites to be verified. Click New installation. Accept the license terms and click Next. (Please note: some of the screens below may be skipped if they do not require any user interaction.)
- On the Setup Support Rules screen, fix any Failed rules and Re-run the scan if necessary. (Please note: Windows Firewall issues will be addressed later in this document.) Click Next.
- On the Feature Selection screen, select Database Engine Services and Management Tools – Basic and click Next.
- (On the Installation Rules screen, fix any Failed rules and Re-run the scan if necessary. Click Next.)
- On the Instance Configuration screen, select Named instance and use the name MSSQLSERVER (or change if needed). The same name should automatically be entered into the Instance ID field. Click Next.
- (On the Disk Space Requirements screen, click Next.)
- On the Server Configuration screen, set the SQL Server Database Engine Account Name to NT AUTHORITY\SYSTEM, and the SQL Server Browser Startup Type to Automatic. Click Next.
- On the Database Engine Configuration screen, on the Account Provisioning tab, select Mixed Mode, and enter a strong password for the system administrator (sa) account. Add any other users or groups that need SQL Server administrator access. Click Next.
- On the Error Reporting screen, click Next. The installation will probably begin automatically at this point. If not, click Next until the install begins.
- On the Complete screen, click Close. Also close the Installation Center.

Enable TCP/IP:

- Click Start, Programs, Microsoft SQL Server 2008 R2, Configuration Tools, SQL Server Configuration Manager.
- Expand SQL Server Network Configuration, and click on Protocols.
- Double-click TCP/IP, and change Enabled to Yes. Click OK and OK again.
- Close SQL Server Configuration Manager.

Add Firewall Exceptions:

- If you are running Windows Firewall or similar software firewall, you must make exceptions to allow remote access to the SQL Server. Click Start, Settings, Control Panel. Double-click Windows Firewall.
- Click the Exceptions tab.
- Click Add Program. Click Browse and select C:\Program Files\Microsoft SQL Server\MSSQL10_50.MSSQLSERVER\MSSQL\Binn\sqlservr.exe. Click OK.
- Click Add Program. Click Browse and select C:\Program Files\Microsoft SQL Server\90\Shared\sqlbrowser.exe. Click OK. Click OK again.

Restart:

- In Control Panel, double-click Administrative Tools. Double-click Services. Right-click SQL Server and click Restart.
- Right-click SQL Server Browser and click Restart.
- Close Services.

Appendix B Setup the SQL Server database

- The below tasks can all be accomplished with SQL Server Management Studio. Make note of the SQL Server/instance name and the database name. These values will be required when you select the Microsoft SQL Server option during the installation, and can also be changed later if needed by manually editing the “win_ats.ini” file.
- Verify that your SQL Server authentication is set to SQL Server and Windows Authentication Mode. To verify or change this setting, right-click your server (or instance), click Properties, and click Security.
- Right-click Databases, and click New Database. Create a new database named “win_ats”. An alternate database name can be used if desired. Click OK.
- Expand the main Security folder, right-click Logins, and click New Login. Create a new Login named “ats_user” (all lower case letters), using SQL Server authentication, with a password of “beligerant” (all lower case letters). Make sure to uncheck all check boxes relating to passwords. Set the default database to win_ats. **Before saving**, continue to the next step.
- Under User Mapping, in the top box, check the Map checkbox next to the win_ats database. In the bottom box, check to set database role memberships of db_datareader and db_datawriter. Click OK to save the login.
- Click the File drop-down menu, click Open, click File, and load the “win_ats.sql” file. **IMPORTANT:** Once the file opens, a new toolbar will be shown at the top of the screen, with a dropdown that contains the databases on the SQL Server. Select the win_ats database, and then click the Execute button to create the database objects.
- Repeat the process and open the “ats_dat.sql” file, select win_ats database, and execute the script file. This will create the initial data.