

Using a Trusted Connection

In SQL Server, you have an option of using a Trusted Connection (also known as Windows Authentication) to authenticate to the database, instead of a hard-coded SQL Server login (“tts_user”, for example). This is generally considered more secure. You can follow the steps below to modify the software to use a trusted connection.

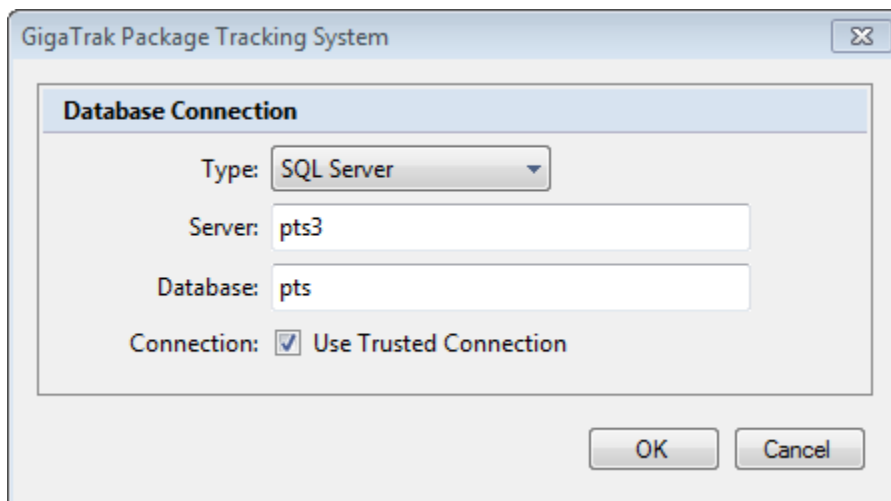
Wireless Handheld Application

If you are using wireless handhelds, these currently do not support a trusted connection. The SQL Server user account is hard-coded and must be setup on the server.

PC Application

The PC application can be modified to use a trusted connection by editing the INI file in the application folder. For TTS, for example:

1. Edit the win_tts.ini file, and add the following line under the [Settings] section:
 - a. Trustedconnection=Yes
2. Our newer software offers to use a trusted connection on the database connection screen within the application:



3. Follow the instructions in the SQL Server section, below, to add the user(s) or group(s) to SQL Server.

Web Portal

The web portal configuration is slightly more involved. Since the portal runs under an application pool, it is this identity that must authenticate to the SQL Server.

1. Add a new local or domain user account.
2. In IIS, right click the application pool (“TTSAppPool”, for example), and click Advanced Settings.
 - a. Under Process Model, click Identity, and click the (...) button.
 - b. Select the account to the one you created in step 1.
 - c. Click OK.
3. Give the folder security permissions for the user.
 - a. The user needs read rights to main application folder (“D:\Data\Web\TTS”, for example).
 - b. The user needs modify rights to the tempReports (“D:\Data\Web\TTS\tempReports”, for example).
4. Edit the web.config file in the main application folder with Notepad.
 - a. Edit the line in the <connectionStrings> section by removing the User Id and Password portions, and adding Trusted_Connection=Yes.
5. Follow the instructions in the SQL Server section, below, to add the user to SQL Server.

SQL Server

1. In SQL Server Management Studio, create a new login.
 - a. Set the login name to the Windows user account or group that the user(s) belong to, or that you created for the web portal. Leave Windows authentication selected.
 - b. Follow the remaining steps for creating the user for your application. For TTS, for example:
 - i. Set the default database to win_tts. Before saving, continue to the next step.
 - ii. Under User Mapping, in the top box, check the Map checkbox next to the win_tts database. In the bottom box, check to set database role memberships of db_datareader and db_datawriter.
 - iii. Click OK to save the login.