

This document provides supplemental instruction with regard to limited management of the SQL database for GigaTrak applications. This may be used as a guide to BACKUP, RESTORE or DELETE the SQL database.

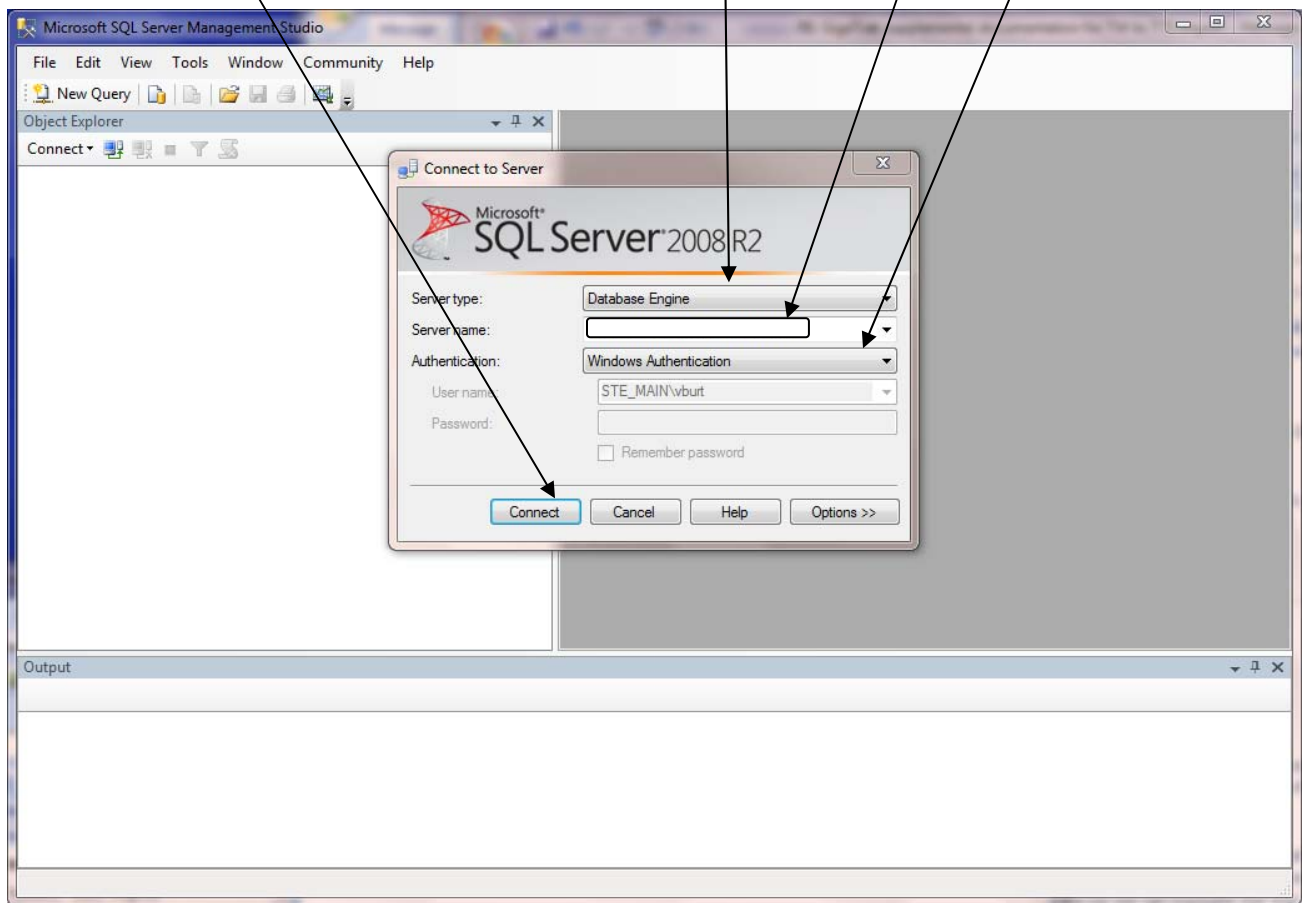
This document is NOT intended, nor should it be used, as a substitution for individual company protocol/procedures for database backup and management practices.

Typically, these would be for the names for the GigaTrak product databases (but, these could vary with version release):

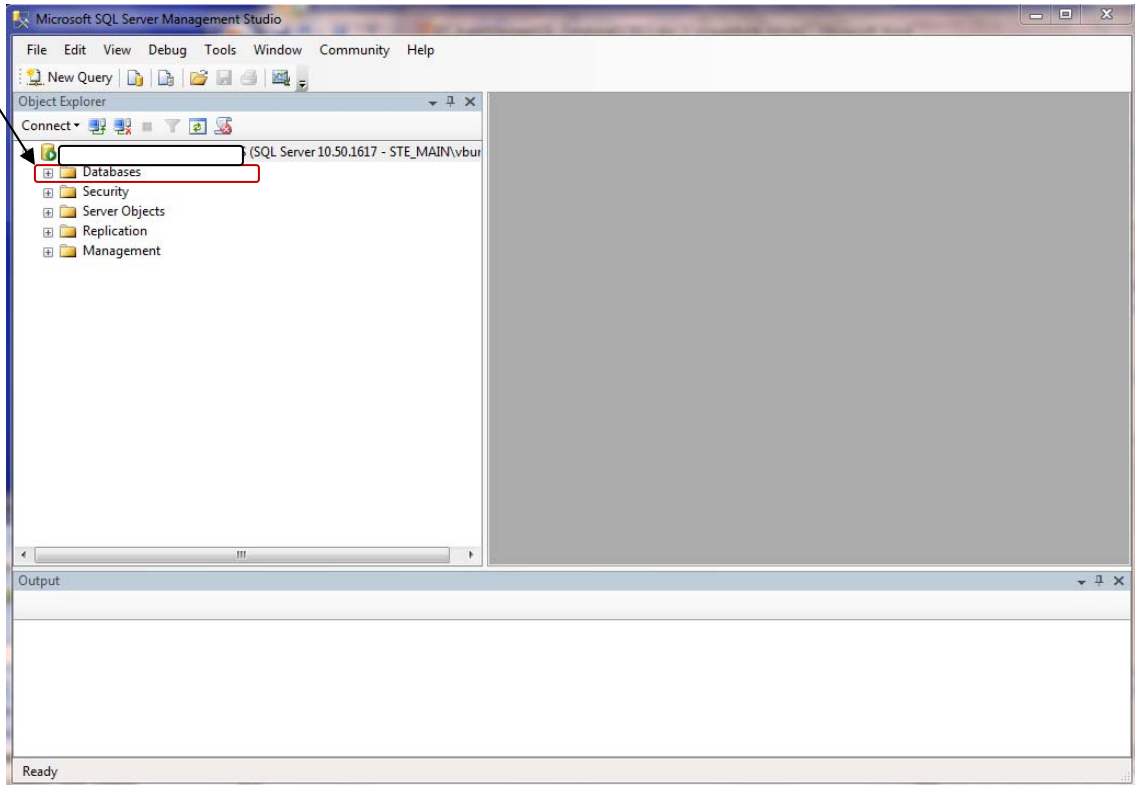
ATS database – win_at
 TTS database – win_tts
 STS database – win_sts
 PTS database – pts
 IMS database – win_ims

Run Microsoft SQL Server Management Studio:

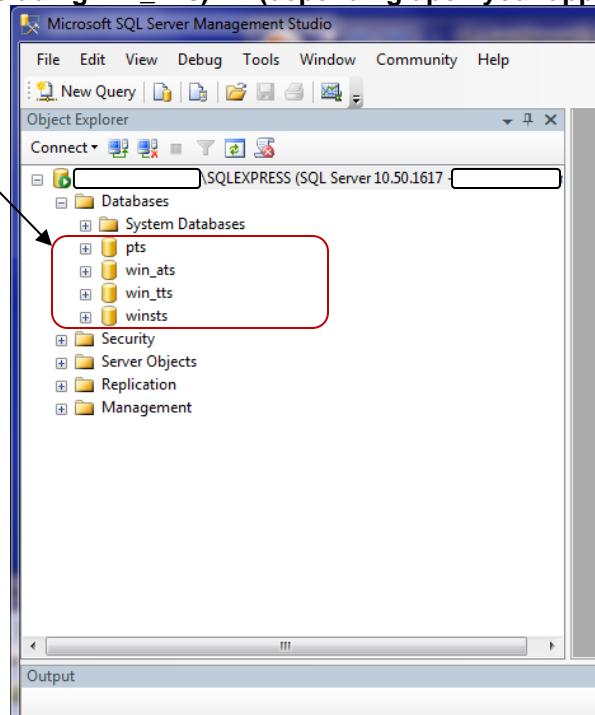
**Given the basic initial screen parameters are correct (Server Type, Name, Authentication....etc.),
 Select Connect to open the session**



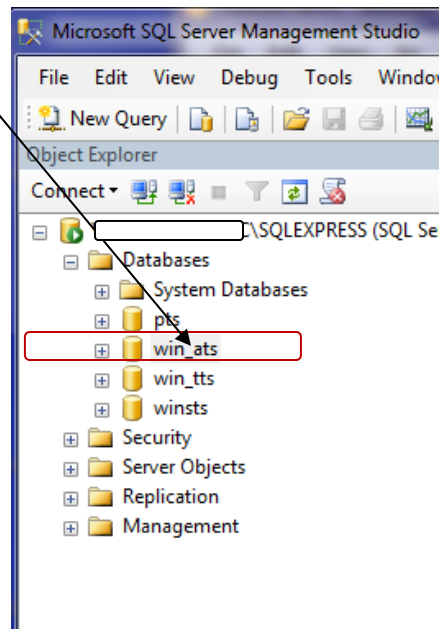
Select the Databases Folder:



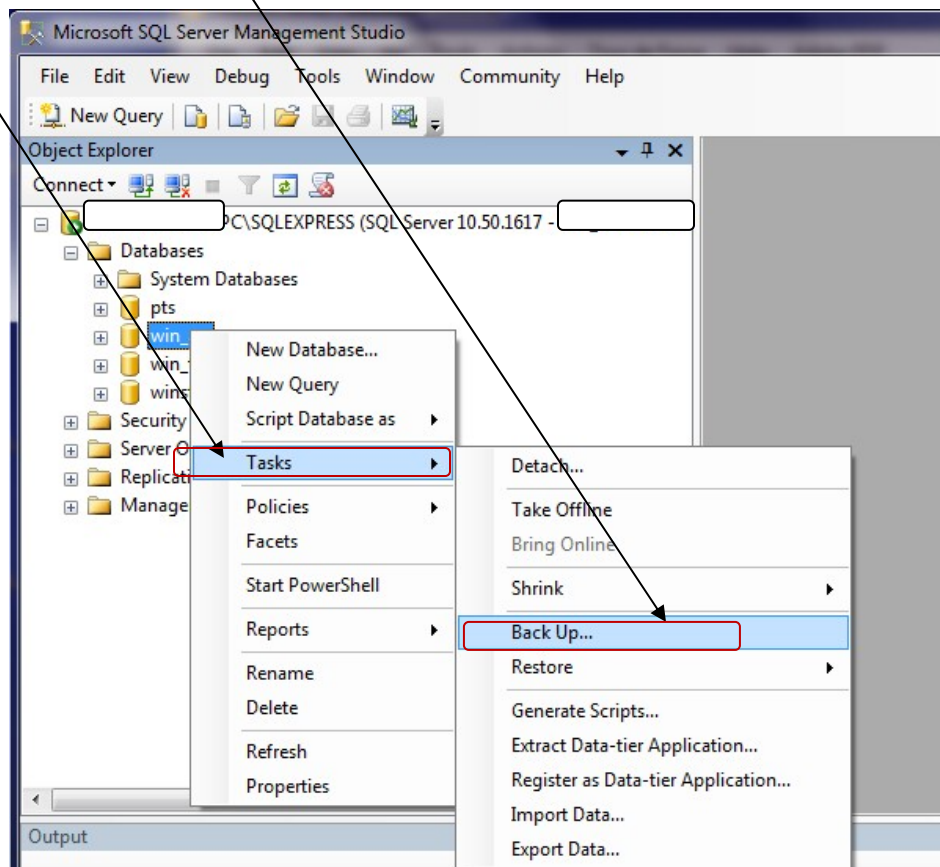
Highlight the database to be Backed up, Restored, or Deleted: It will be one of the following GigaTrak databases (including win_ims) ... (depending upon your application(s)):



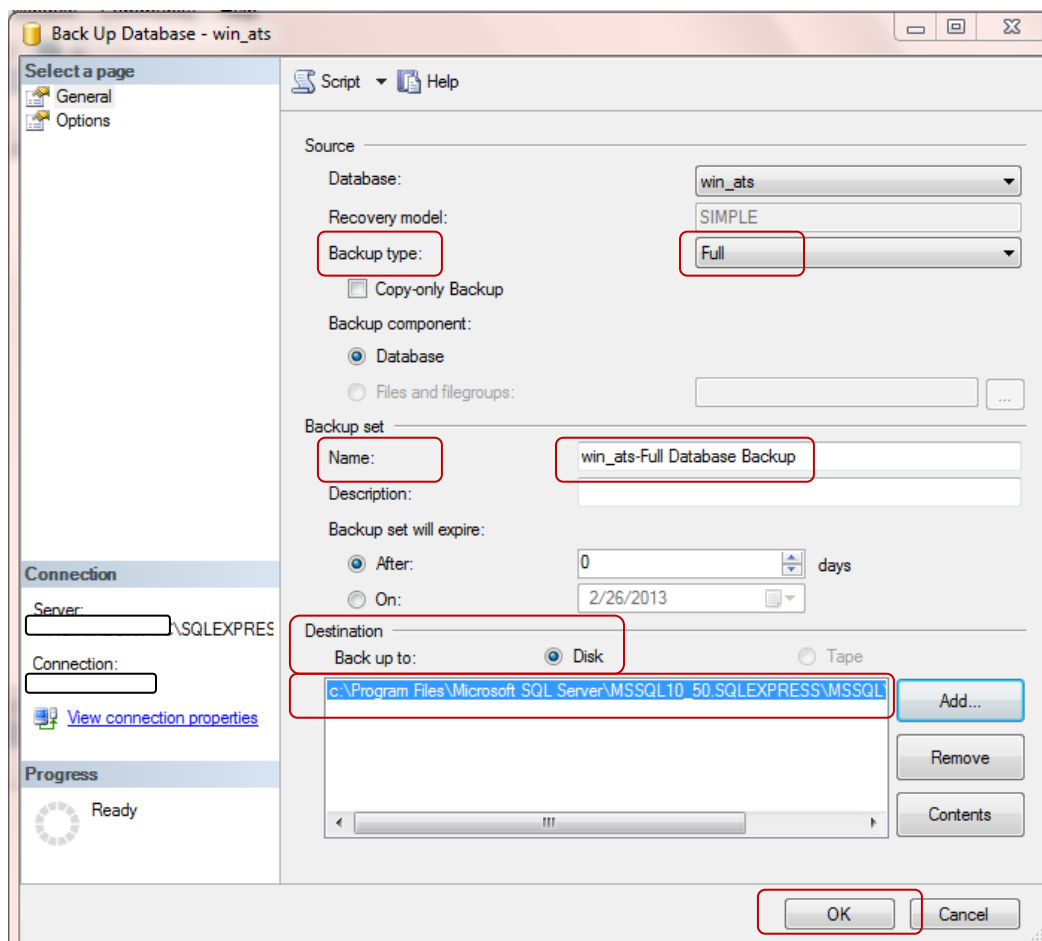
- 1) **To BACKUP the DATABASE** (Restore is on page 6 of this document. Delete on page 9):
- Once highlighted, **Right Click** on the database to bring up the next drop down menu:



- Select Tasks | Select Back Up:

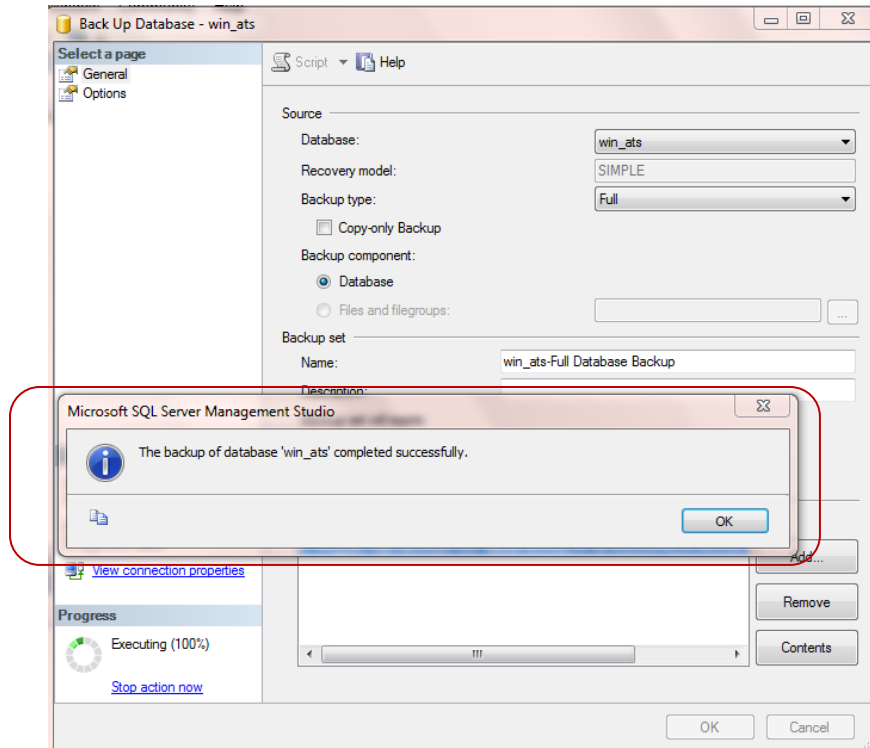


- From the resulting screen: Set the Backup Type |
 - Backup Component is Database |
 - Set the Backup Name |
 - Set the Backup Destination (note the Path and file name):
 - Once the Destination is set | Select OK



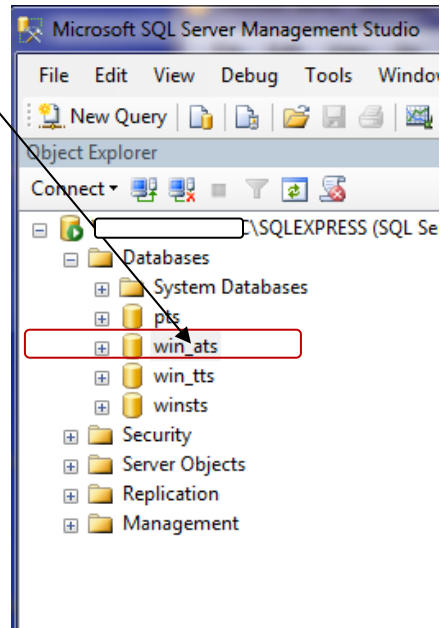
- *By taking note of the name of the backup file and the data file path, additional backups could be made by copying that file to a separate disk/location.*

The backup should be confirmed as successful: Select OK to complete

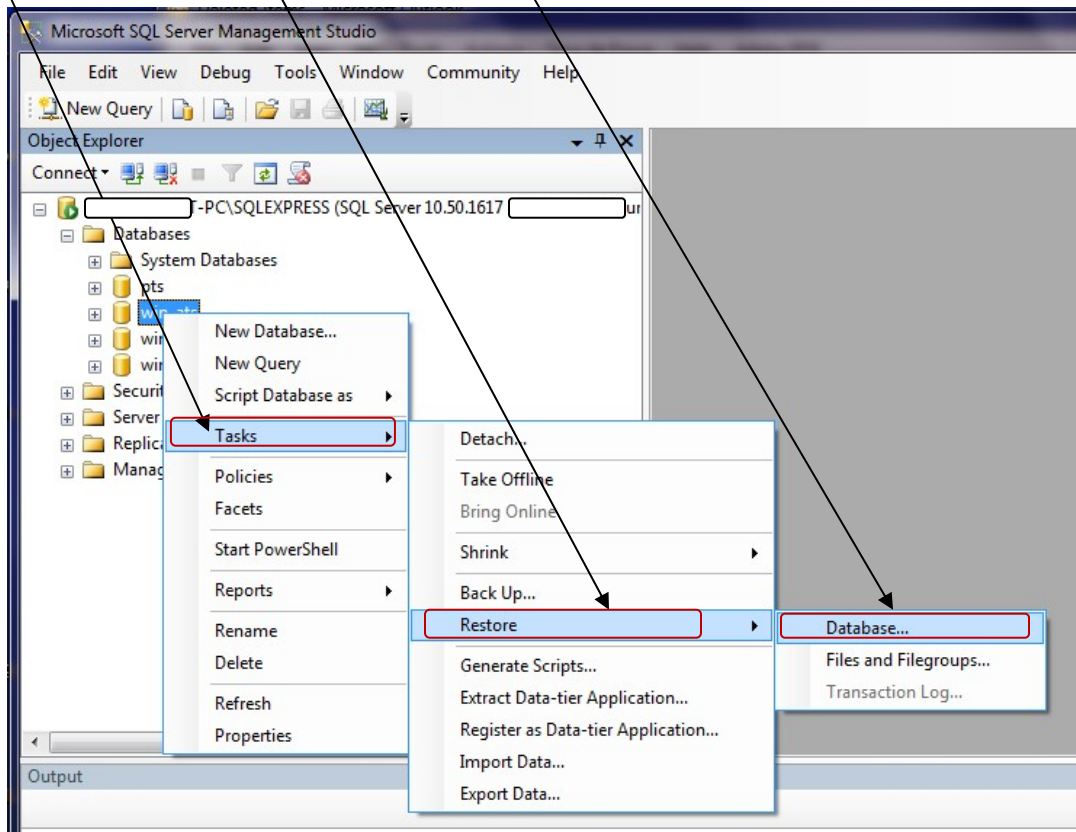


2) To **RESTORE** the **DATABASE** (Delete is on page 9 of this document):

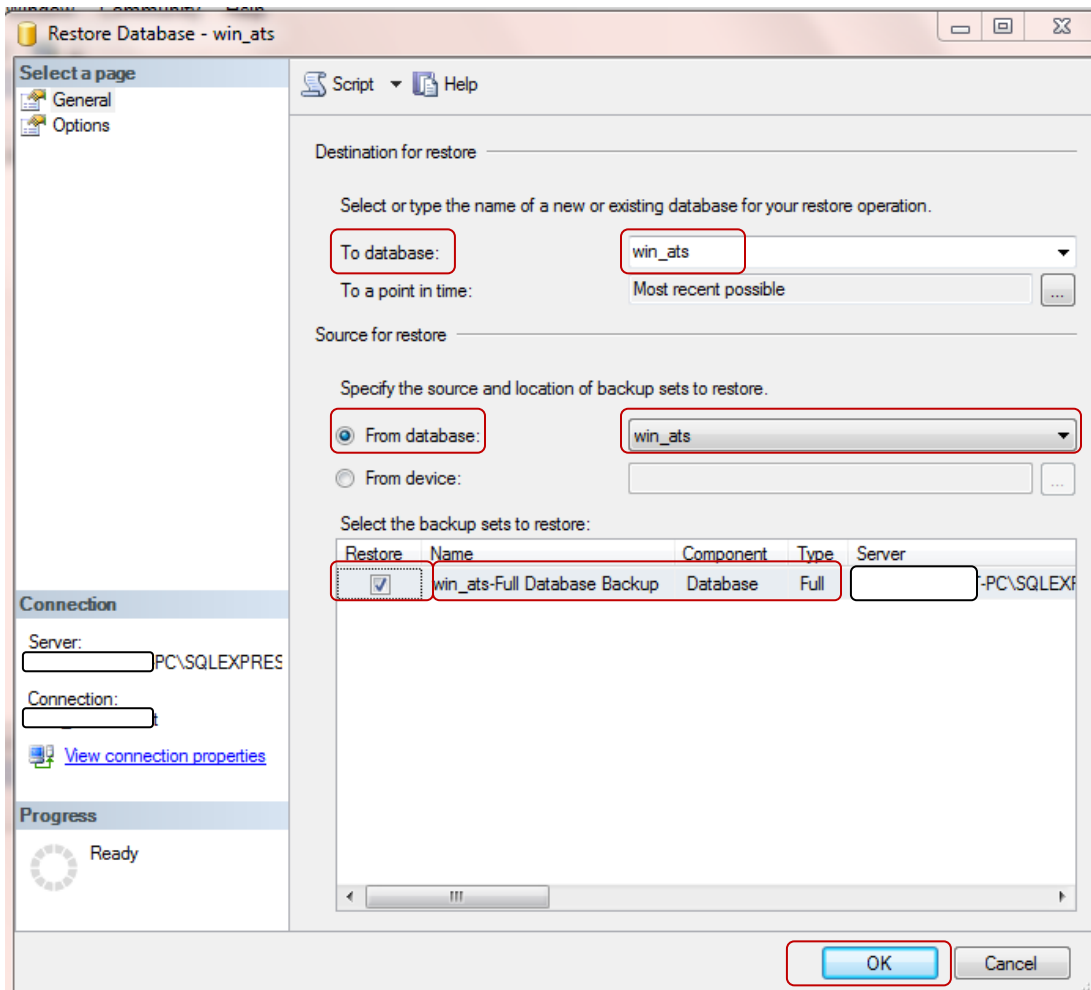
- Once highlighted, **Right Click** on the database to bring up the next drop down menu:



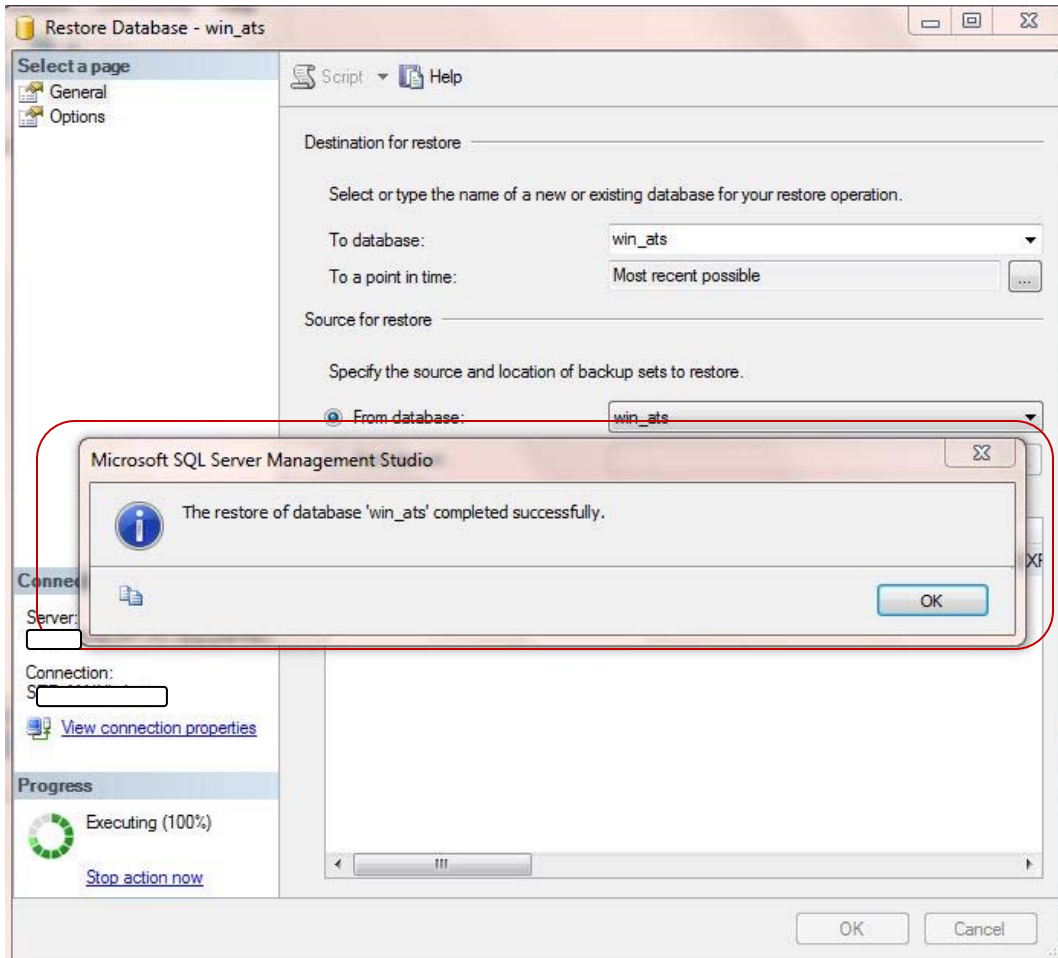
- Select **Tasks** | **Select Restore** | **Select Database**:



- From the resulting screen: Set Backup To database | Select the database
 Select Backup From database | Select the Backup filename
 Check the Restore File Box
 Select OK

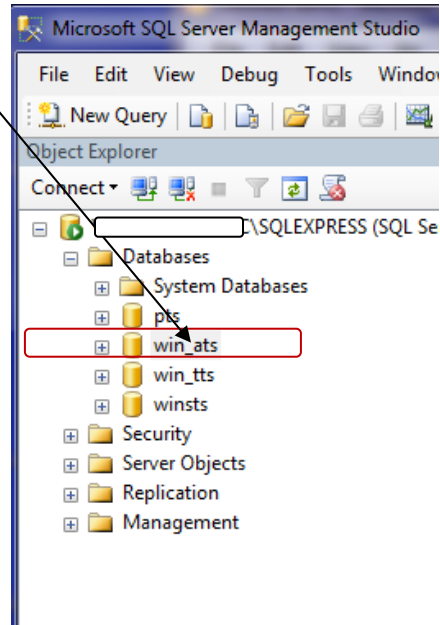


Select OK:

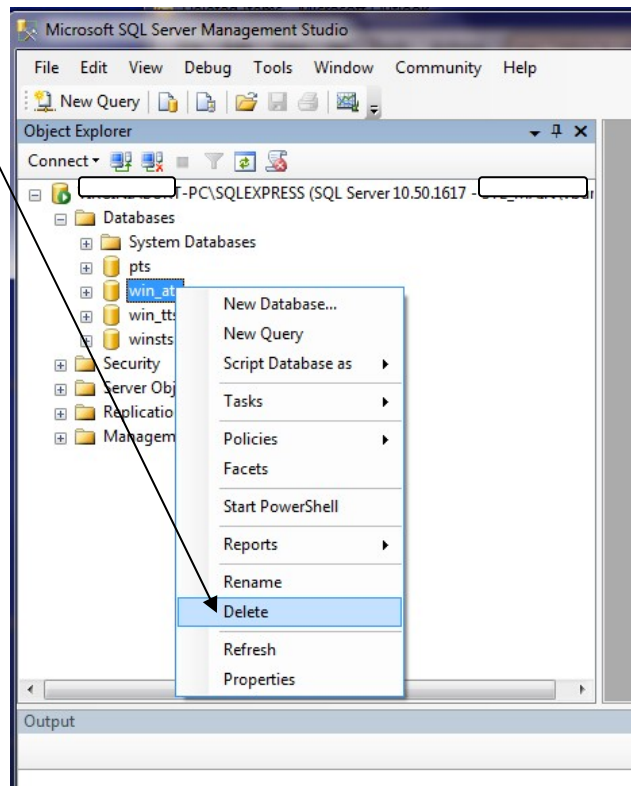


3) To DELETE the DATABASE:

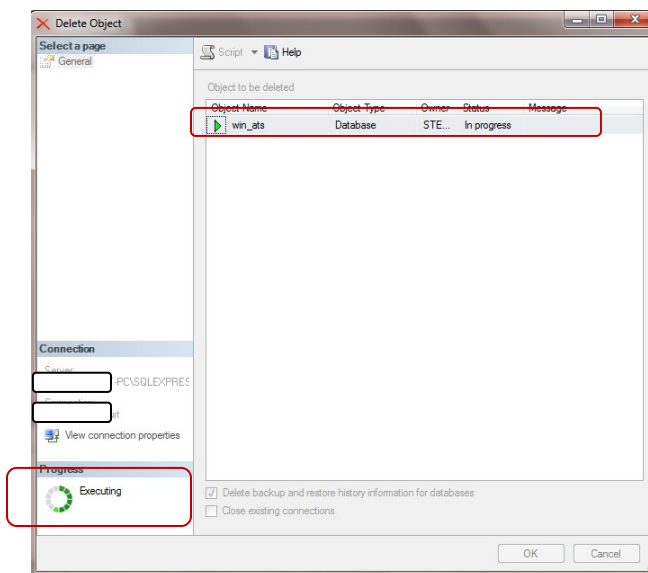
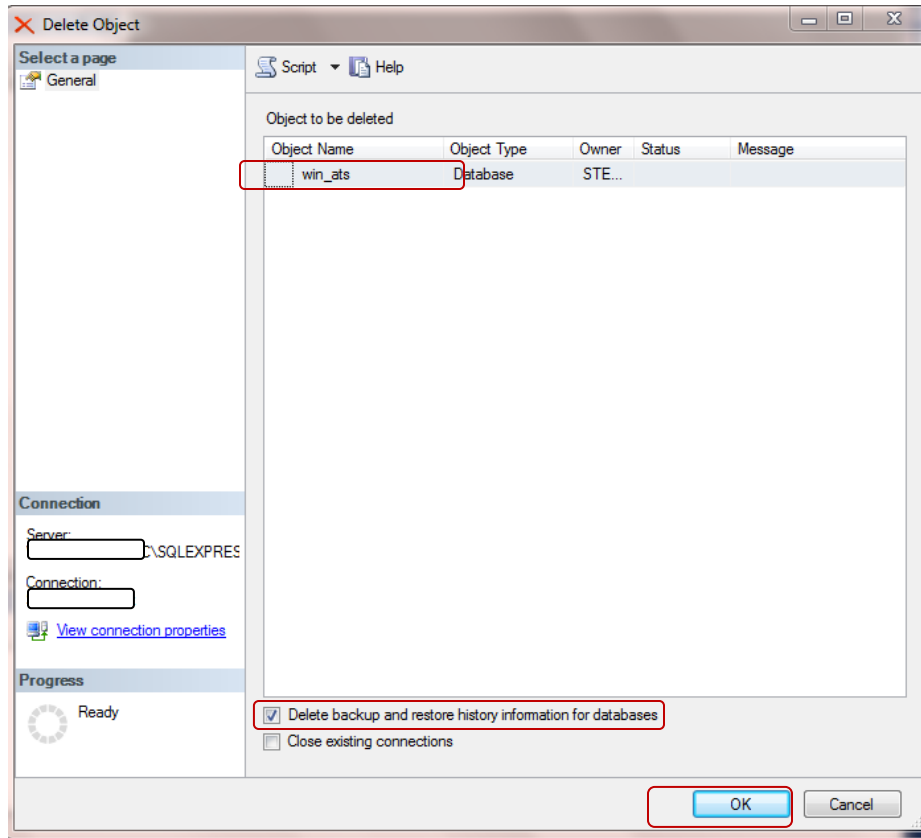
- Once highlighted, **Right Click** on the database to bring up the next menu:



Select Delete:

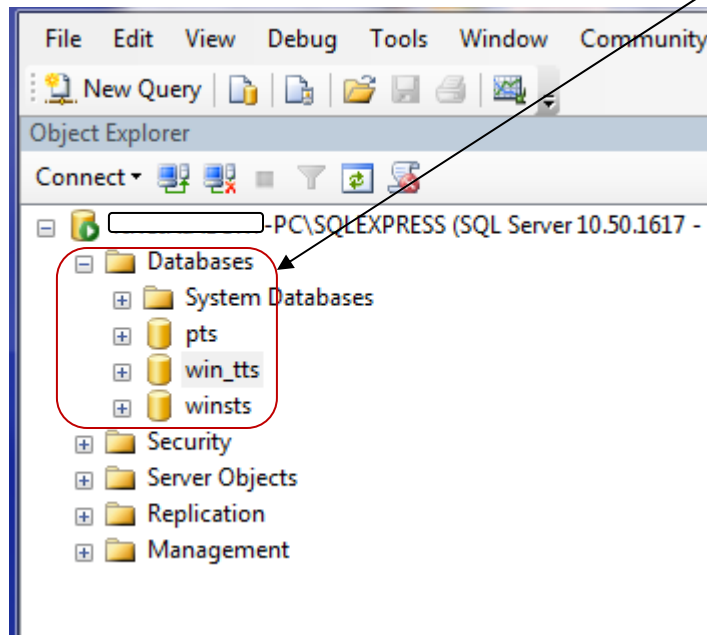


Verify the correct database is selected | Check Delete Backup and restore history | Select OK:



□ The Delete will execute:

- The database will be removed: IE., win_ats no longer in databases listing:



- ***Once a database is deleted, in order to reinstate a clean database, you will need to recreate it and rerun the database scripts provided with your GigaTrak software..***

Reference GT_SQLSupplement*. * version for your particular GigaTrak product.

This document can be found in either the ATS, TTS, IMS or STS web “client center” section at www.gigatrak.com.