

***Supplement to main GigaTrak STS Installation Instructions:******Appendix A SQL Server Express Edition***

This document provides installation and configuration notes on installing a new instance of SQL Server 2008 R2 Express for use with GigaTrak software.

**Install SQL Server 2008 R2 Express:**

- If not already installed, download and install the appropriate version of Microsoft Windows Installer 4.5 for your operating system from the following link:  
<http://www.microsoft.com/download/en/details.aspx?id=8483>
- If not already installed, download and install Microsoft .NET Framework 3.5 SP1 from the following link: <http://www.microsoft.com/download/en/details.aspx?id=22>
- If not already installed, download and install the appropriate version of Windows PowerShell 2.0 (part of the Windows Management Framework) for your operating system from the following link:  
<http://support.microsoft.com/kb/968929>
- Download the appropriate version of SQL Server 2008 R2 Express with tools for your operating system from the following link: <http://www.microsoft.com/betaexperience/pd/SQLEXP08V2/enus/>
- Launch the installer and wait for the files to unpack and the prerequisites to be verified. Click New installation. Accept the license terms and click Next. (Please note: some of the screens below may be skipped if they do not require any user interaction.)
- On the Setup Support Rules screen, fix any Failed rules and Re-run the scan if necessary. (Please note: Windows Firewall issues will be addressed later in this document.) Click Next.
- On the Feature Selection screen, select Database Engine Services and Management Tools – Basic and click Next.
- (On the Installation Rules screen, fix any Failed rules and Re-run the scan if necessary. Click Next.)
- On the Instance Configuration screen, select Named instance and use the name MSSQLSERVER (or change if needed). The same name should automatically be entered into the Instance ID field. Click Next.
- (On the Disk Space Requirements screen, click Next.)
- On the Server Configuration screen, set the SQL Server Database Engine Account Name to NT AUTHORITY\SYSTEM, and the SQL Server Browser Startup Type to Automatic. Click Next.
- On the Database Engine Configuration screen, on the Account Provisioning tab, select Mixed Mode, and enter a strong password for the system administrator (sa) account. Add any other users or groups that need SQL Server administrator access. Click Next.
- On the Error Reporting screen, click Next. The installation will probably begin automatically at this point. If not, click Next until the install begins.
- On the Complete screen, click Close. Also close the Installation Center.

**Enable TCP/IP:**

- Click Start, Programs, Microsoft SQL Server 2008 R2, Configuration Tools, SQL Server Configuration Manager.
- Expand SQL Server Network Configuration, and click on Protocols.
- Double-click TCP/IP, and change Enabled to Yes. Click OK and OK again.
- Close SQL Server Configuration Manager.

**Add Firewall Exceptions:**

- If you are running Windows Firewall or similar software firewall, you must make exceptions to allow remote access to the SQL Server. Click Start, Settings, Control Panel. Double-click Windows Firewall.

**For Windows XP:**

- Click the Exceptions tab.
- Click Add Program. Click Browse and select C:\Program Files\Microsoft SQL Server\MSSQL10\_50.MSSQLSERVER\MSSQL\Binn\sqlservr.exe. Click OK.
- Click Add Program. Click Browse and select C:\Program Files\Microsoft SQL Server\90\Shared\sqlbrowser.exe. Click OK. Click OK again.

**For Windows 7:**

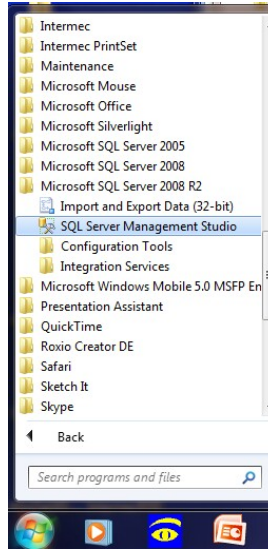
- Click Advanced Settings
- Click Inbound Rules
- Click New Rule.
  - a. Select Program, click Next
  - b. Click Browse to %Program Files%\Microsoft SQL Server\MSSQL10\_50.MSSQLSERVER\MSSQL\Binn\sqlservr.exe. Click Next.
  - c. Click Next (allow the connection).
  - d. Select Profiles, click Next
  - e. Name = SQL Server, click Finish
- Click New Rule.
  - a. Select Program, click Next
  - b. Click Browse to %Program Files% (x86)\Microsoft SQL Server\MSSQL10\_50.MSSQLSERVER\MSSQL\Binn\sqlbrowser.exe. Click Next.
  - c. Click Next (allow the connection).
  - d. Select Profiles, click Next
  - e. Name = SQL Server Browser, click Finish

**Restart:**

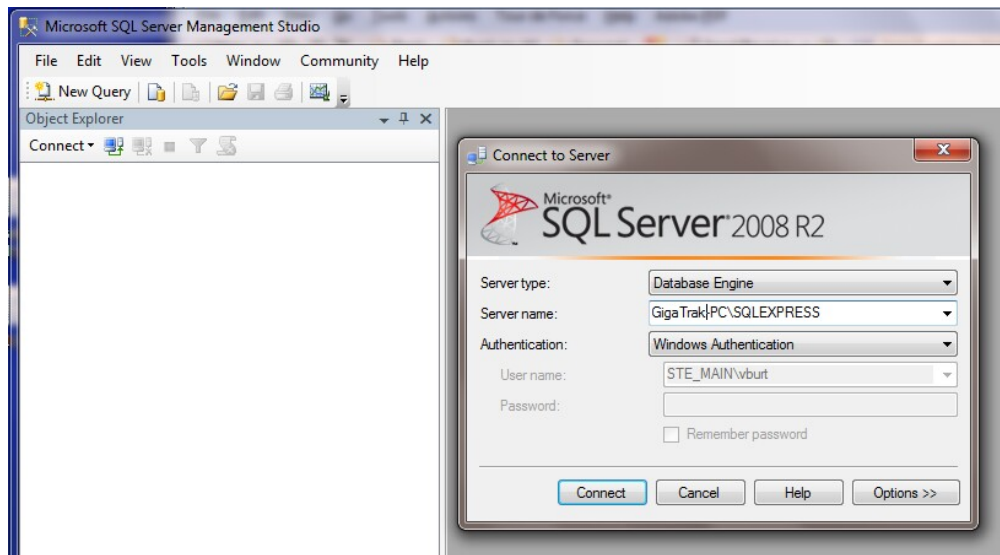
- In Control Panel, double-click Administrative Tools. Double-click Services. Right-click SQL Server and click Restart.
- Right-click SQL Server Browser and click Restart.
- Close Services.

**Appendix B Setup the SQL Server database**

- The below tasks can all be accomplished with SQL Server Management Studio. Make note of the SQL Server/instance name and the database name. These values will be required when you select the Microsoft SQL Server option during the installation, and can also be changed later if needed by manually editing the “winsts.ini” file.

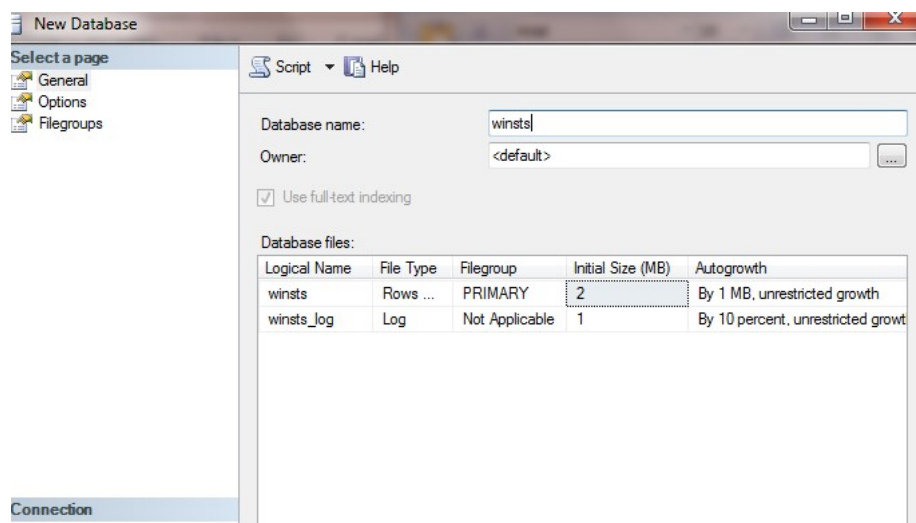
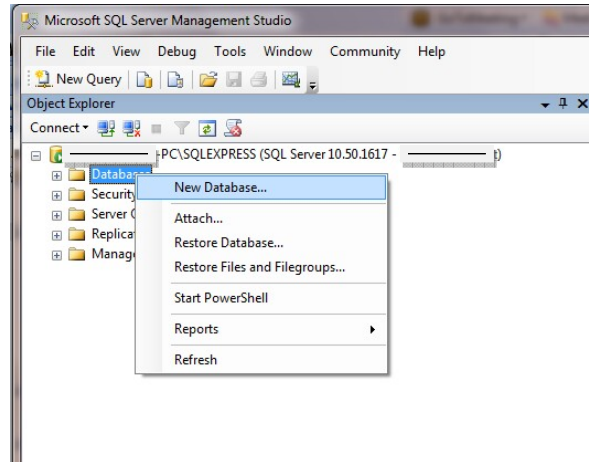
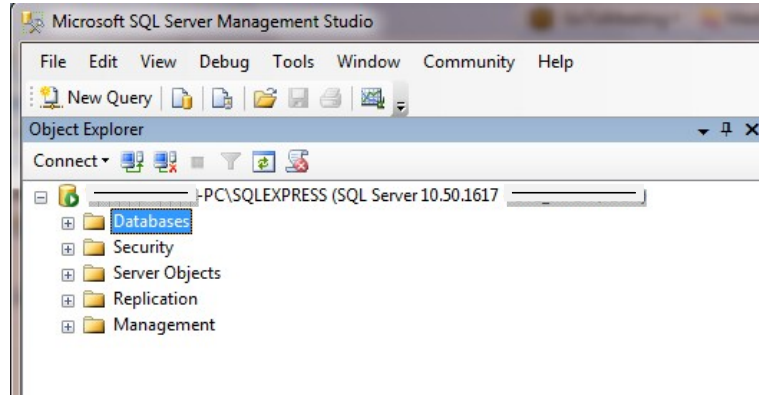


- Verify that your SQL Server authentication is set to **SQL Server and Windows Authentication Mode**. To verify or change this setting, right-click your server (or instance), click Properties, and click Security.

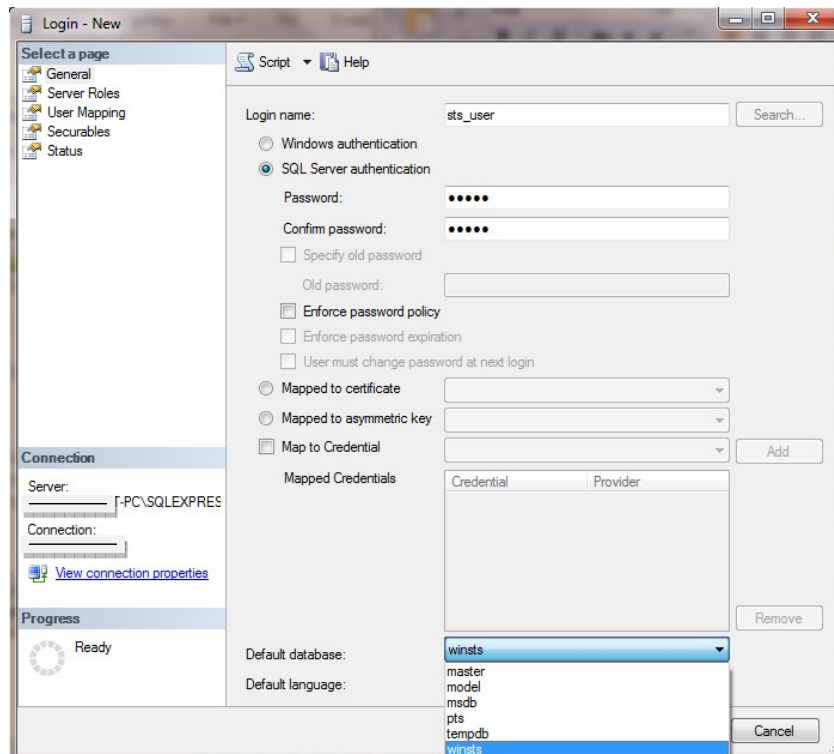
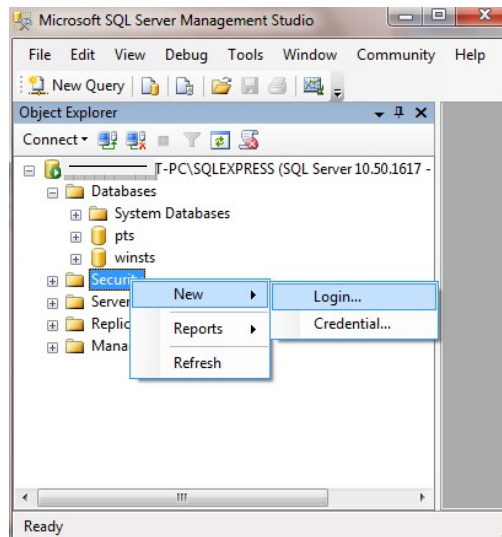


## Supplement: GigaTrak STS Installation Instructions

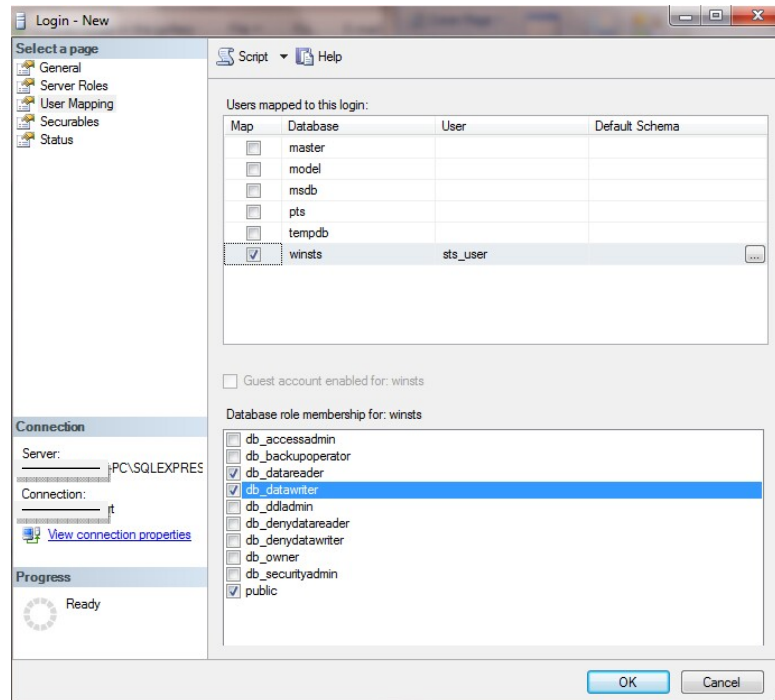
- ❑ Right-click Databases, and click New Database. Create a new database named “**winsts**”. An alternate database name can be used if desired. Click OK.



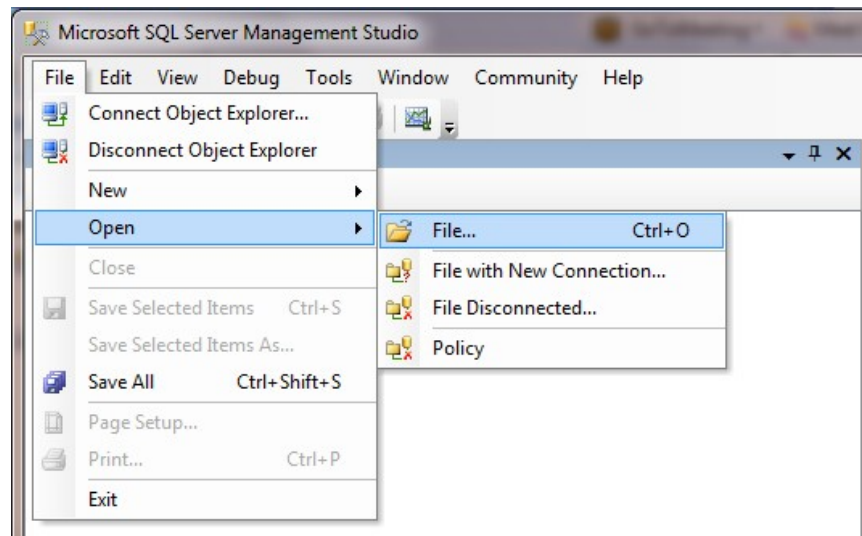
- Expand the main Security folder, right-click Logins, and click New Login. Create a new Login named **“sts\_user”** (all lower case letters), using SQL Server authentication, with a password of **“grump”** (all lower case letters). Make sure to uncheck all check boxes relating to passwords. Set the **default database to winsts**. **Before saving**, continue to the next step – User Mapping.



- Under User Mapping, in the top box, check the **Map checkbox next to the winsts database**. In the bottom box, check to set database role memberships of **db\_datareader** and **db\_datawriter**. Click OK to save the login.

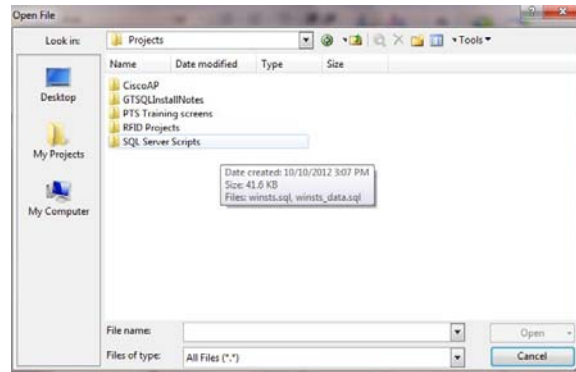


- Click the File drop-down menu, click Open, click File.

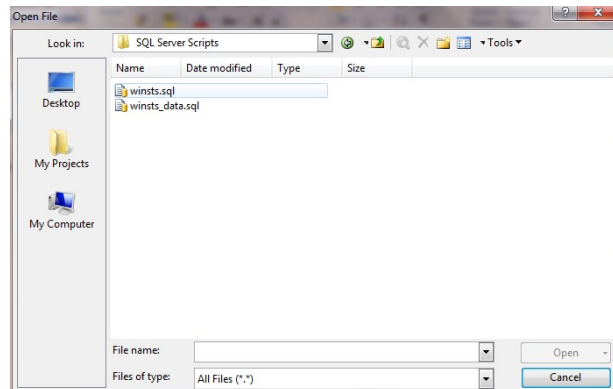


**Supplement: GigaTrak STS Installation Instructions**

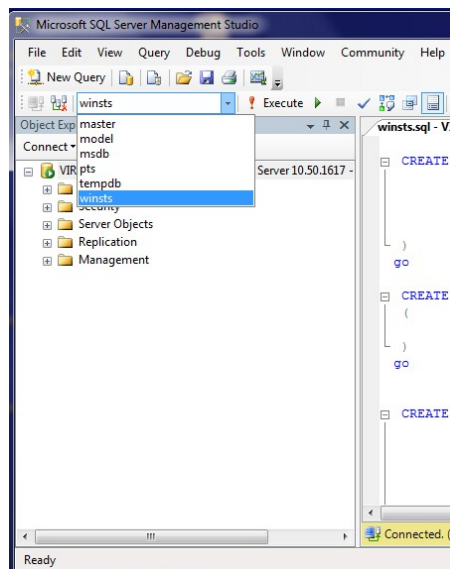
Locate your SQL Server Script folder on your computer or server – the one included in the GigaTrak software download link.

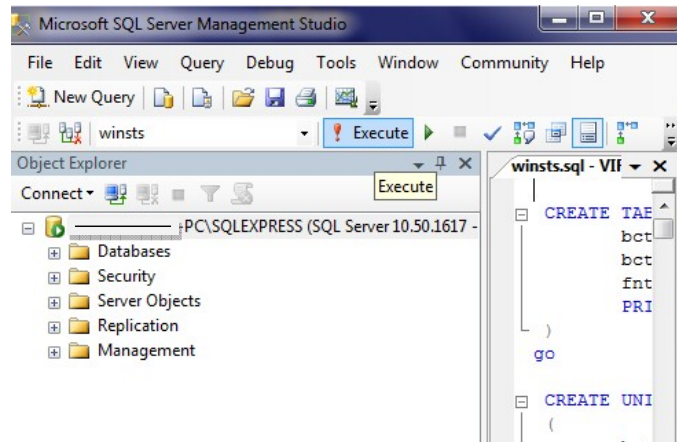


- First, load the “winsts.sql” file.

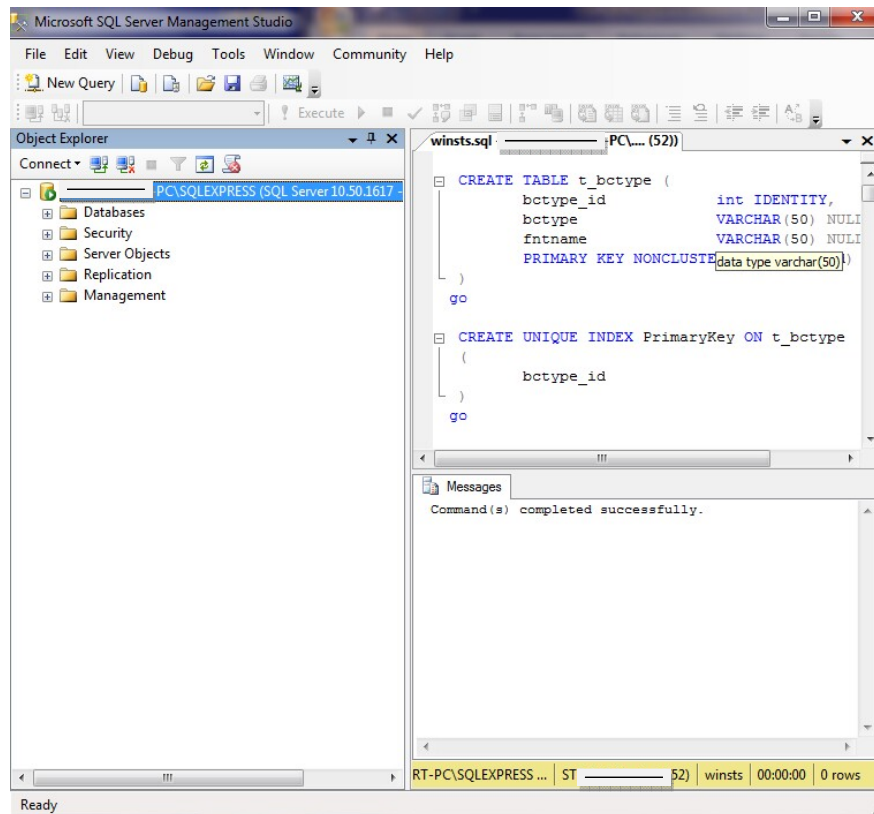


**IMPORTANT:** Once the file opens, a new toolbar will be shown at the top of the screen, with a dropdown that contains the databases on the SQL Server. **Select the winsts database**, and then **click the Execute button** to create the database objects.



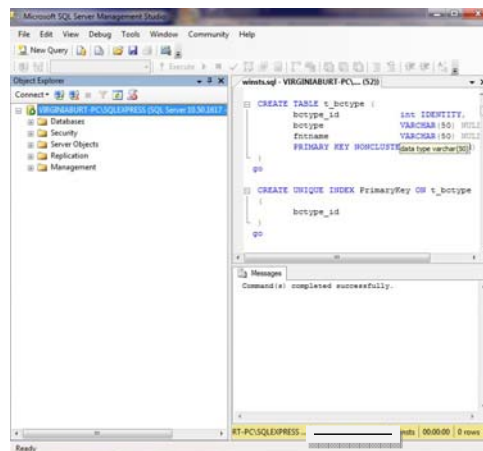
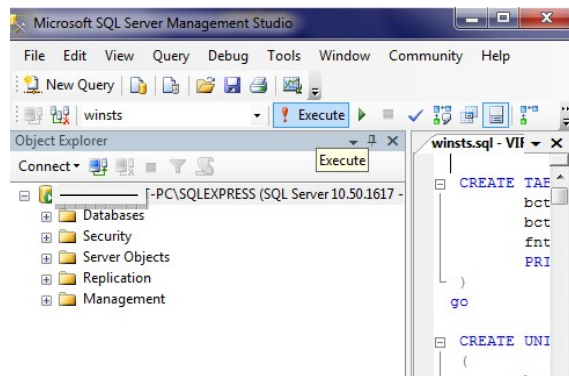
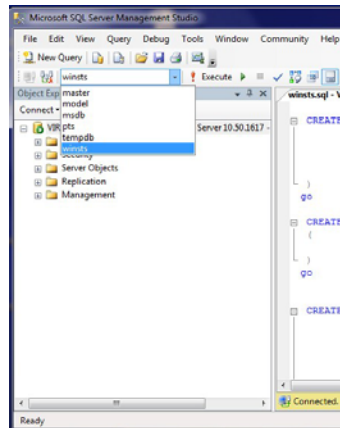
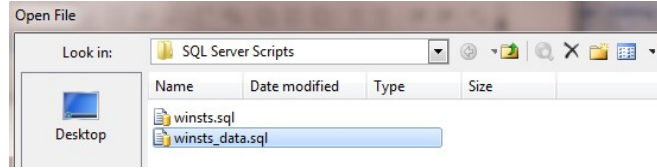


Message Successful will appear once script load is complete.



## Supplement: GigaTrak STS Installation Instructions

- Repeat the process and open the “winsts\_data.sql” file, select winsts database, and execute the script file. This will create the initial data.



## **Appendix C      *Configure the Handheld Mobile Data Terminal***

- If using a mobile wireless data terminal, the terminal will also need to be configured to function with the STS database.
- Install the mobile handheld STS client onto the terminal, following instructions provided on the GigaTrak website (will require either Microsoft Activesynch or Windows Mobile Device Manager for this installation).
- Once the handheld client is installed, from the handheld desktop screen:  
    Select “Start” | Programs | STS (Wireless)



- From the STS Logon Screen, Select 'Admin'.



- The Admin password is: gigastores



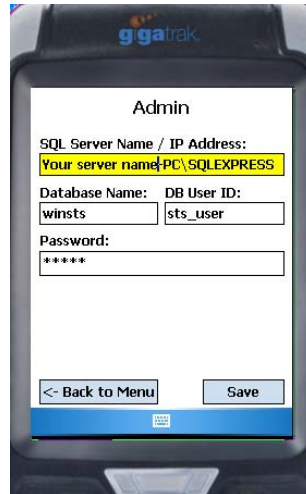
- Fill in the SQL database info:

SQL Server Name / IP address: as it appears on your SQL Server Logon Screen

Database Name: winsts

Database User ID: sts\_user

Password: grump



- Save and then Select 'Back to Menu'
- If all parameters are correctly configured, if Employees have been set up in the main STS PC Application, you will be able to log on and access the STS handheld functions.

