

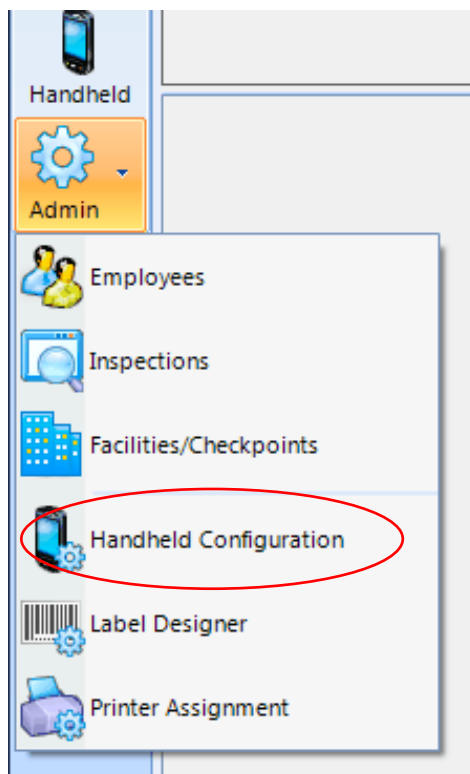


Installing GigaTrak Application on Handheld Terminal:

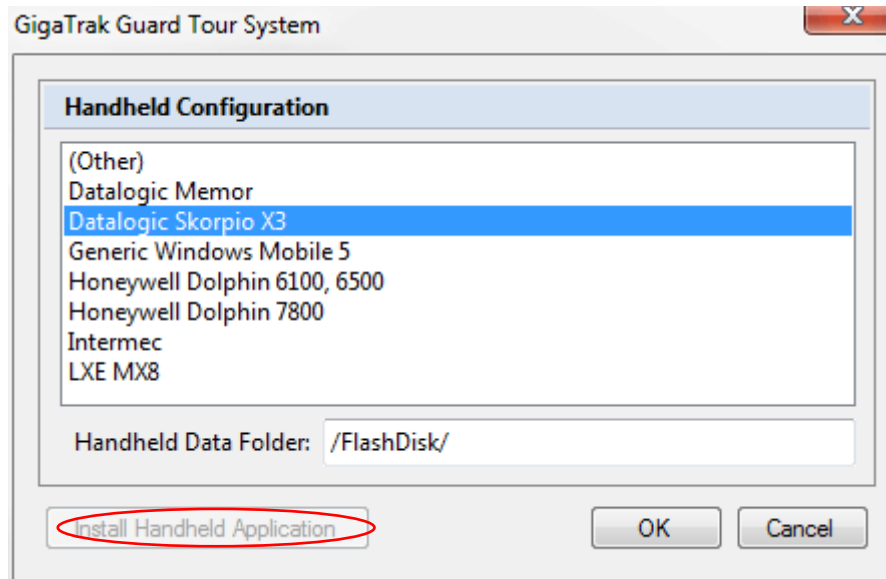
A mobile, handheld data “terminal” runs like a mini PC with an abbreviated version of Windows OS (CE). GigaTrak products have client applications that can run on these terminals and supplement the GigaTrak main PC application functionality.

The mobile client software is included with the main application software license download, if you purchase the handheld terminals (or if you have existing terminals you wish to use). You will need to install this client software on the handheld terminal.

For installing the handheld application for the Guard Tour System, you must first login to the main PC application. When you are logged in, you go to the Admin button on the left panel, then select Handheld Configuration.



After selecting Handheld Configuration, the screen below will appear.

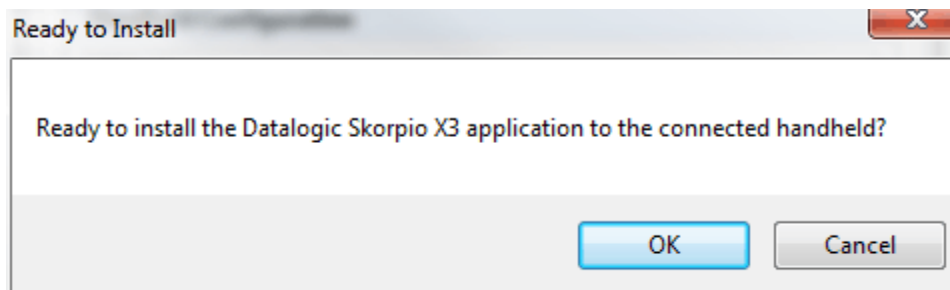


You must select the handheld unit you purchased (or an existing handheld you wish to use). The Handheld Data Folder will change to reflect where on the handheld terminal that the application will be saved.

After selecting the correct handheld, click the Install Handheld Application button.

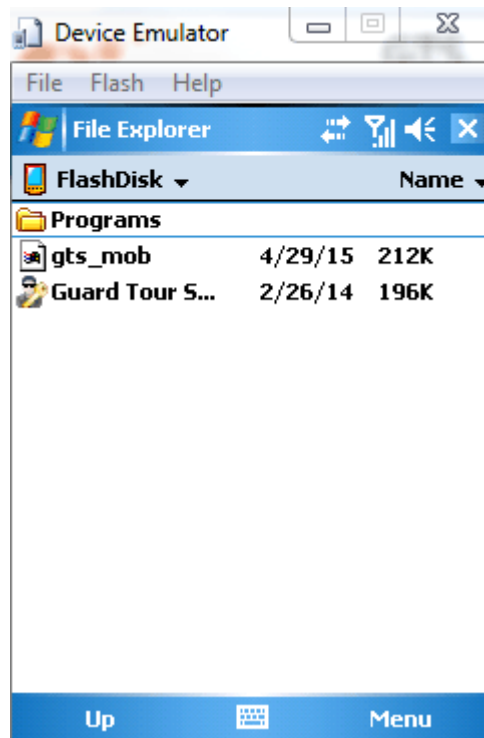
NOTE: In order to install the handheld application, you must have the handheld terminal docked and connected through Windows Mobile Device Center. Reference our docking/syncing videos on the Client Center to properly connect the handheld to the PC.

The below message will pop up after clicking the Install Handheld Application button. If you are ready to install and synced up, click OK.





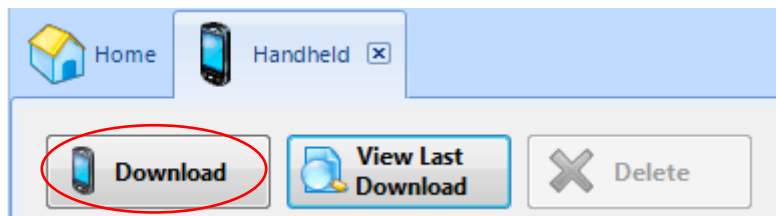
After the installation is complete, a program will be saved on the handheld for the Guard Tour System application.



Select the Guard Tour System icon on the handheld. It will notify you that there is not a database currently located on the device, and it will ask you to download the PC data with the handheld application.

To do this, go to the Handheld button on the left panel of the PC application. The Handheld tab will open where you will be able to download the information from the PC to the handheld application.

Click the Download button. A pop up will let you know when the sync is complete.





Once the database has been downloaded to the handheld unit, you should now be able to use the handheld application to complete tours.